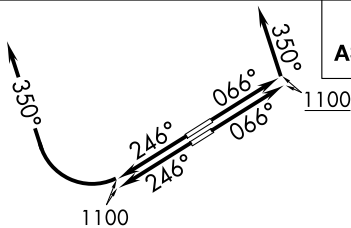


# CAVVS FOUR DEPARTURE (RNAV)

ATIS 125.25  
CLNC DEL  
339.8  
121.9 (when tower closed)  
GND CON 121.9 339.8  
LAKEFRONT TOWER \*  
124.3 (CTAF) 339.8  
CLEVELAND DEP CON  
125.35 346.325

**TOP ALTITUDE:  
ASSIGNED BY ATC**



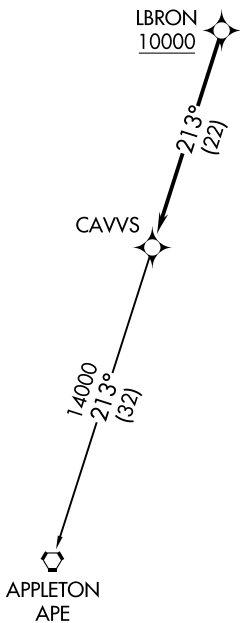
NOTE: RADAR required.  
NOTE: RNAV 1.  
NOTE: DME/DME/IRU or  
GPS required.

### TAKEOFF MINIMUMS:

Rwys 6L/R, 24R: Standard with a minimum climb  
of 500' per NM to 1100.  
Rwy 24L: 400-1 $\frac{3}{4}$  or standard with minimum  
climb of 757' per NM to 1000.

EC-2, 25 FEB 2021 to 25 MAR 2021

EC-2, 25 FEB 2021 to 25 MAR 2021



### DEPARTURE ROUTE DESCRIPTION

TAKEOFF RUNWAYS 6L/R: Climb on heading 066° to 1100, then on heading 350° or as assigned by ATC, maintain 2000 (do not climb above 2000) for RADAR vectors to cross LBRON at or above 10000, thence....

TAKEOFF RUNWAYS 24L/R: Climb on heading 246° to 1100, then right turn heading 350° or as assigned by ATC, maintain 2000 (do not climb above 2000) for RADAR vectors to cross LBRON at or above 10000, thence....

....on track 213° to CAVVS, then on (transition).  
Maintain altitude assigned by ATC, expect  
filed altitude ten minutes after departure.

APPLETON TRANSITION (CAVVS4.APE)

NOTE: Chart not to scale.

# CAVVS FOUR DEPARTURE (RNAV)