

LOC/DME I-BFT <b>109.75</b> Chan <b>34</b> (Y)	APP CRS <b>245°</b>	Rwy Idg 24R <b>24L</b> TDZE <b>6003 5199</b> Apt Elev <b>583 584</b> <b>584 584</b>
--	------------------------	---

# ILS or LOC RWY 24R

BURKE LAKEFRONT (BKL)

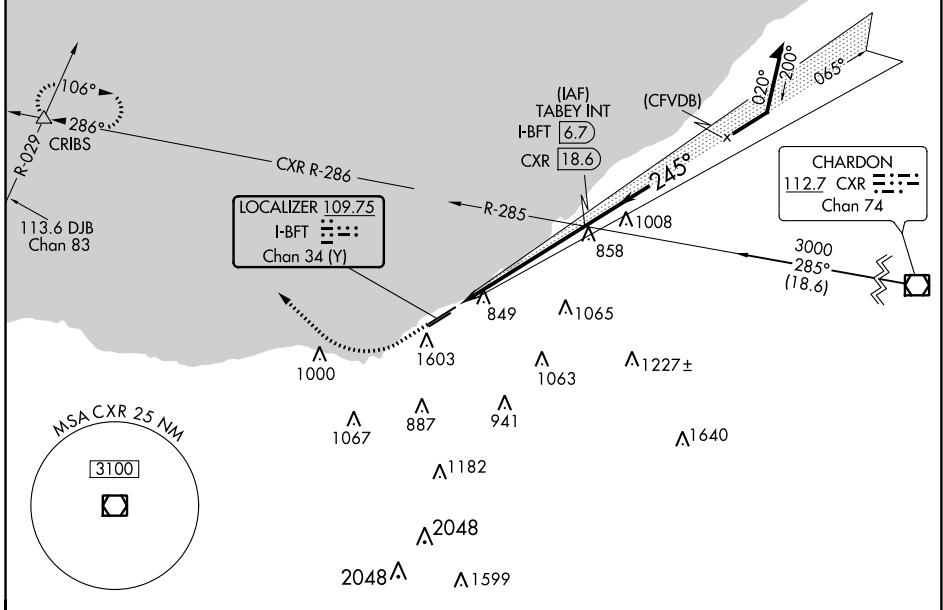
RADAR or DME required for procedure entry.

**MAJLSP** MISSED APPROACH: Climb to 1000 then climbing right turn to 2000 on heading 350° to CXR R-286 then climb to 3000 on CXR VOR/DME R-286 to CRIBS INT and hold.

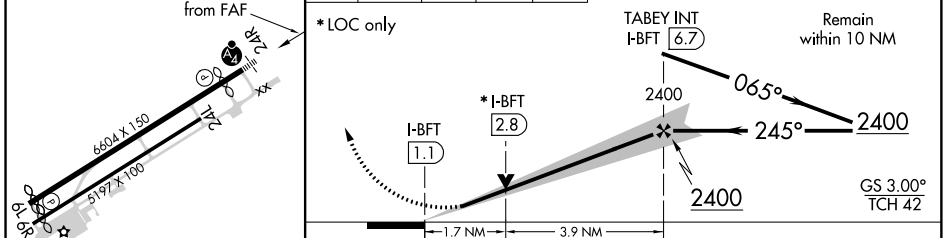
Circling Rwy 6R NA at night. Rwy 24R helicopter visibility reduction below 3/4 SM NA. Circling NA southeast of Rwy 6R and 24L. S-ILS minimums NA when control tower closed.

-23°C

ATIS <b>125.25</b>	CLEVELAND APP CON <b>125.35 346.325</b>	LAKEFRONT TOWER * <b>124.3</b> (CTAF) <b>339.8</b>	GND CON <b>121.9 339.8</b>	CLNC DEL <b>339.8</b>	CLNC DEL <b>121.9</b> (when twr closed)	UNICOM <b>122.95</b>
-----------------------	--	---	-------------------------------	--------------------------	---	-------------------------



ELEV 584	<b>D</b> TDZE 24R 583 TDZE 24L 584	1000	2000	3000	CRIBS	VGSI and ILS glidepath not coincident (VGSI Angle 3.00/TCH 42).
----------	---------------------------------------	------	------	------	-------	--



REIL Rwy 6L and 24L HIRL Rwy 6L-24R and 6R-24L FAF to MAP 5.6 NM	CATEGORY	A	B	C	D
	S-ILS 24R	917-3/4 334 (400-3/4)			
	S-LOC 24R	1160-3/4 577 (600-3/4)	1160-1 577 (600-1)		
	SIDESTEP 24L	1160-1 576 (600-1)	1160-1 576 (600-1)		
	CIRCLING	1160-1 577 (600-1)	1160-1 577 (600-1)		1160-2 577 (600-2)

EC-2, 25 FEB 2021 to 25 MAR 2021

EC-2, 25 FEB 2021 to 25 MAR 2021