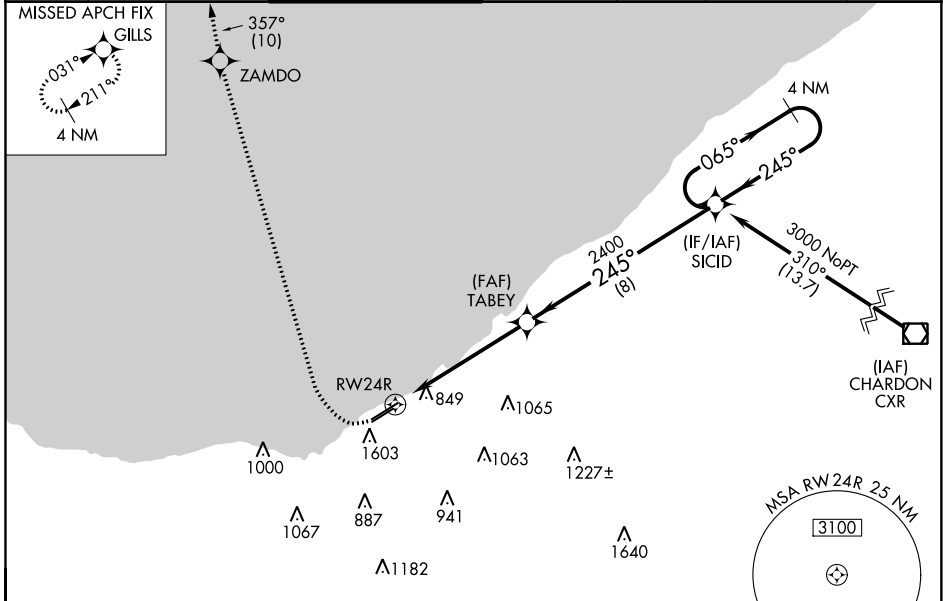


WAAS CH <b>77621</b> <b>W24A</b>	APP CRS <b>245°</b>	Rwy Idg TDZE Apt Elev	<b>6003</b> <b>583</b> <b>584</b>
--	------------------------	-----------------------------	---

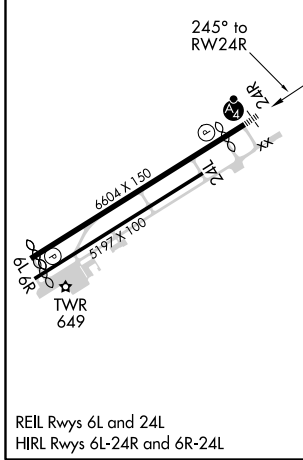
# RNAV (GPS) RWY 24R

BURKE LAKEFRONT (BKL)

RNP APCH.		<p>▼ For uncompensated Baro-VNAV systems, LNAV/VNAV NA below -16°C (4°F) or above 40°C (104°F). Circling Rwy 6R NA at night. Rwy 24R helicopter visibility reduction below ¾ SM NA. Circling NA southeast of Rwy 6R and 24L. For inop ALS, increase LNAV Cat C and D visibility to 3 SM.</p>		<p>MALSF</p>		<p>MISSED APPROACH: Climbing right turn to 2000 direct ZAMDO then climb to 4000 on track 357° to GILLS and hold. # Missed approach requires minimum climb of 421 feet per NM to 1900.</p>	
ATIS <b>125.25</b>	CLEVELAND APP CON <b>125.35 346.325</b>	LAKEFRONT TOWER ★ <b>124.3 (CTAF) 0 339.8</b>	GND CON <b>121.9 339.8</b>	CLNC DEL <b>339.8</b>	CLNC DEL <b>121.9</b> (when twr closed)	UNICOM <b>122.95</b>	



ELEV	<b>584</b>	<b>D</b>	TDZE	<b>583</b>
------	------------	----------	------	------------



2000	ZAMDO	4000	GILLS	<p>VGSI and RNAV glidepath not coincident (VGSI Angle 3.00/TCH 42).</p> <p>4 NM Holding Pattern</p>
*LNAV only.			TABEY	
*3.1 NM to RWY 24R		2400	245°	3000
-3.1 NM -		-2.5 NM -	8 NM	

CATEGORY	A	B	C	D
LPV DA	1401-2½		818 (900-2½)	
LPV DA #	NA		1249-1⅞ 666 (700-1⅞)	
LNAV/VNAV DA	1324-2½		741 (800-2½)	
LNAV MDA	1620-1 1037 (1100-1)	1620-1¼ 1037 (1100-1¼)	1620-2½	1037 (1100-2½)
CIRCLING	1620-1¼	1036 (1100-1¼)	1620-3	1036 (1100-3)

EC-2, 25 FEB 2021 to 25 MAR 2021

EC-2, 25 FEB 2021 to 25 MAR 2021