

| | | | |
|--|------------------------|---|-------------|
| WAAS CH 49140 W35A | APP CRS 354° | Rwy Idg TDZE 112 Apt Elev 112 | 6006 |
|--|------------------------|---|-------------|

RNAV (GPS) RWY 35

BROOKS COUNTY (BKS)



For uncompensated Baro-VNAV systems, LNAV/VNAV NA below -15°C (5°F) or above 54°C (130°F). Circling Rwy 14 NA at night. DME/DME RNP-0.3 NA.

MISSED APPROACH: Climb to 3000 direct SALUM and hold.

AWOS-3
118.125

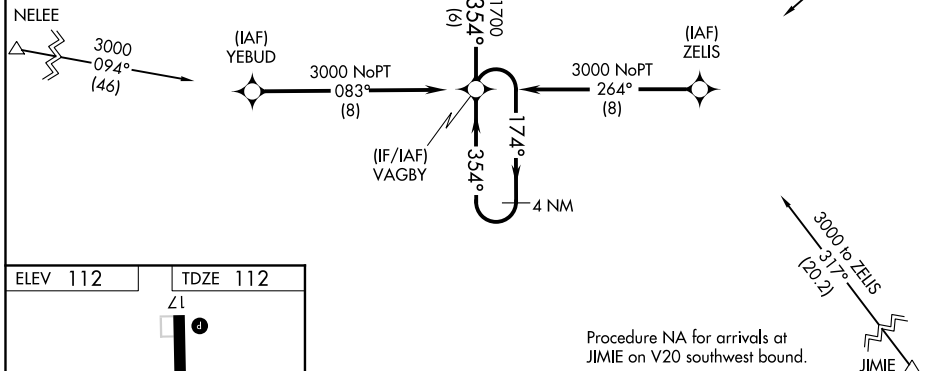
KINGSVILLE APP CON *
119.9 290.45

UNICOM
122.8 (CTAF) 0

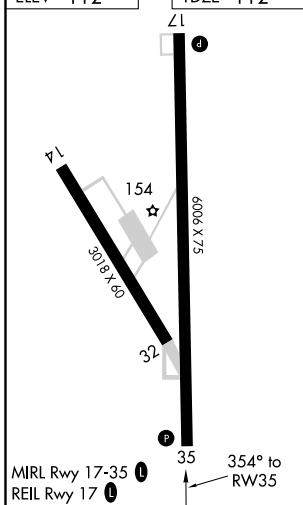
MISSED APCH FIX



Procedure NA for arrivals at NELEE via V17 northwest bound.



ELEV 112 TDZE 112



| | | | | |
|--|----------------------|----------------------|------------------------|----------------------------|
| 3000 | SALUM | WAVUS 2.1 NM to RW35 | VATSY 1700 | VAGBY 4 NM Holding Pattern |
| *LNAV only - 0.9 NM to RW35 | | *820 | 354° | 174° → 3000 |
| 0.9 | 1.2 | 2.8 NM | 6 NM | GP 3.00° TCH 45 |
| CATEGORY | A | B | C | D |
| LPV DA | | 362-1 | 250 (300-1) | |
| LNAV/VNAV DA | | 362-1 | 250 (300-1) | |
| LNAV MDA | | 440-1 | 328 (400-1) | |
| <input checked="" type="checkbox"/> CIRCLING | 580-1 468 (500-1) | 680-1 568 (600-1) | 940-2½ 828 (900-2½) | 940-2¾ 828 (900-2¾) |

SC-3, 25 FEB 2021 to 25 MAR 2021

SC-3, 25 FEB 2021 to 25 MAR 2021