

LOC I-BLF 109.5	APP CRS 229°	Rwy Idg TDZE Apt Elev	4743 2857 2857
---------------------------	------------------------	-----------------------------	---

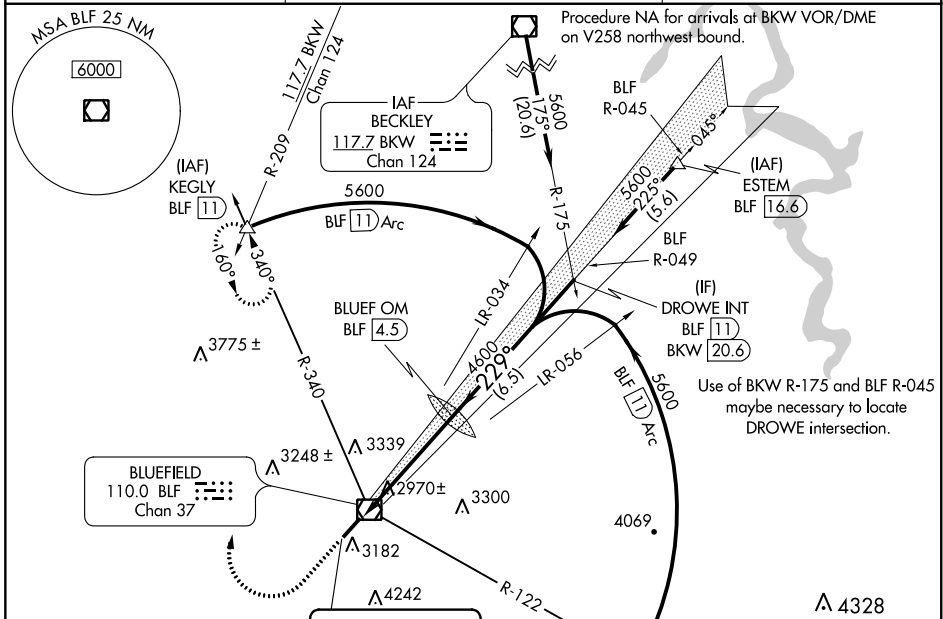
ILS or LOC RWY 23

MERCER COUNTY (BLF)

⚠ Autopilot coupled approach NA below 3600 MSL. When local altimeter setting not received, use Beckley altimeter setting and increase all DA 443 feet and all MDA 460 feet; increase S-ILS 23 all Cats visibility 2½ mile and S-LOC 23 Cat A visibility 1¼ mile, Cat B to 1½ mile and Cats C and D to 3 miles. Circling NA southeast of Rwy 5-23.

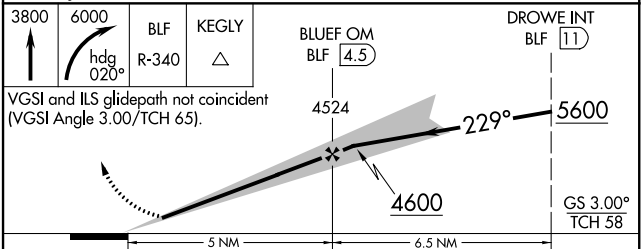
MISSED APPROACH: Climb to 3800 then climbing right turn to 6000 on heading 020° and BLF VOR/DME R-340 to KEGLY INT/BLF 11 DME and hold.

ASOS 132.725	INDIANAPOLIS CENTER 126.575 257.85	CTAF 122.9
------------------------	--	----------------------



ELEV 2857	D	TDZE 2857
229° 5 NM from FAF		
2890±		
2955±		
2997±		
2919±		
2935±		
2903		
2913		
HIRL Rwy 5-23		
REIL Rwys 5 and 23		

LOCALIZER 109.5
I-BLF
3519
3952



	A	B	C	D
S-ILS 23		3157-1	300 (300-1)	3157-7/8 300 (300-7/8)
S-LOC 23	3520-1	663 (700-1)	3520-1 3/4 663 (700-1 3/4)	3520-2 663 (700-2)
CIRCLING	3520-1	663 (700-1)	3560-2 703 (800-2)	3560-2 1/4 703 (800-2 1/4)

NE-4, 25 FEB 2021 to 25 MAR 2021

NE-4, 25 FEB 2021 to 25 MAR 2021