

VOR/DME BLF <b>110.0</b> Chan <b>37</b>	APP CRS <b>225°</b>	Rwy Idg TDZE Apt Elev	<b>4743</b> <b>2857</b> <b>2857</b>
---	------------------------	-----------------------------	---

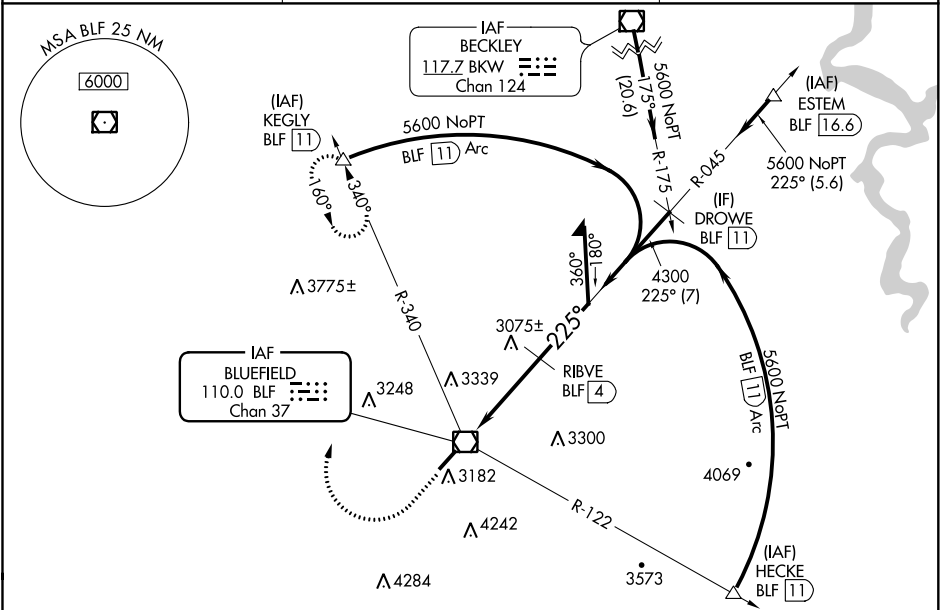
# VOR RWY 23

MERCER COUNTY (BLF)

**⚠** DME required. When local altimeter setting not received, use Beckley altimeter setting and increase all MDA 460 feet; increase S-23 visibility Cat A ¼ mile, Cat B ½ mile, Cat C 1 ½ mile, Cat D 1 ¼ mile; increase Circling visibility Cat A ¼ mile, Cat B ½ mile, Cat C 1 mile, Cat D ¾ mile. VDP NA when using Beckley altimeter setting. Circling NA southeast of Rwy 5-23.

**MISSED APPROACH:** Climb to 3800 then climbing right turn to 6000 on heading 020° and BLF R-340 to KEGLY/BLF 11 DME and hold.

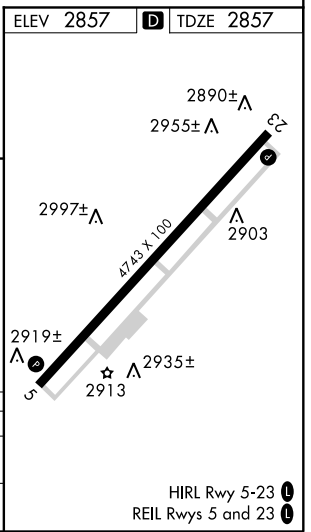
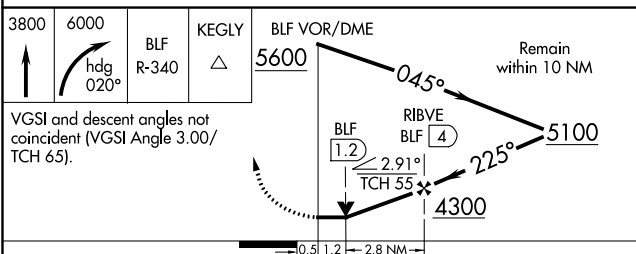
ASOS <b>132.725</b>	INDIANAPOLIS CENTER <b>126.575 257.85</b>	CTAF <b>122.9</b>
------------------------	--	----------------------



NE-4, 25 FEB 2021 to 25 MAR 2021

NE-4, 25 FEB 2021 to 25 MAR 2021

ELEV 2857	<b>D</b> TDZE 2857
-----------	--------------------



CATEGORY	A	B	C	D
S-23	3440-1	583 (600-1)	3440-1 ½ 583 (600-1 ½)	3440-1 ¾ 583 (600-1 ¾)
CIRCLING	3440-1	583 (600-1)	3560-2 703 (800-2)	3560-2 ¼ 703 (800-2 ¼)

HIRL Rwy 5-23  
REIL Rws 5 and 23