

| | | |
|---------------------------------|------------------------|---|
| WAAS CH 50426 W35A | APP CRS 358° | Rwy Idg 8900 TDZE 4230 Apt Elev 4230 |
|---------------------------------|------------------------|---|

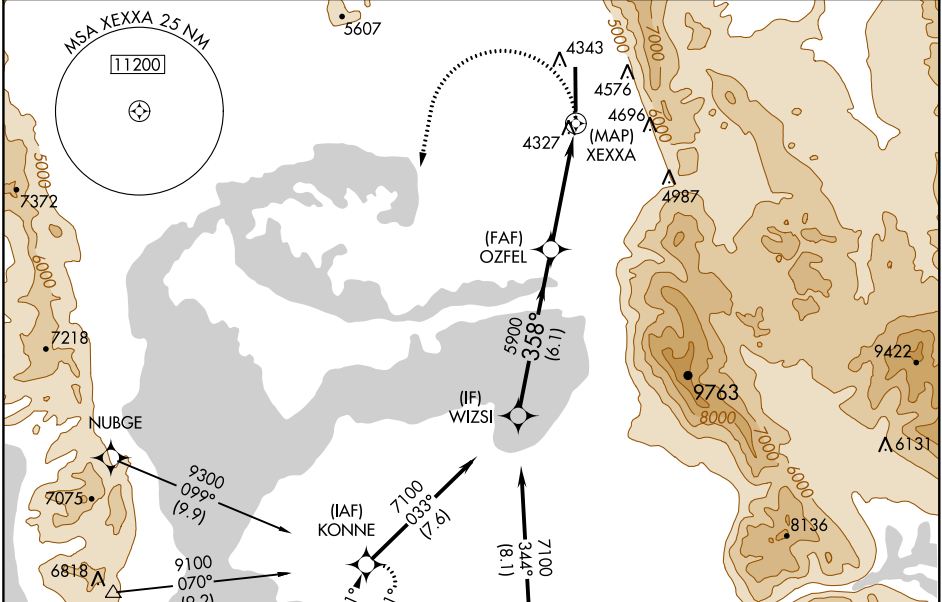
RNAV (GPS) RWY 35

BRIGHAM CITY RGNL (BMC)

▼ When local altimeter setting not received, use Ogden altimeter setting and increase all MDA 100 feet, increase LP Cat C visibility ¼ mile, increase LNAV Cat B visibility ¼ mile, and Cat C visibility ⅓ mile, increase Circling Cat B visibility ¼ mile, and Cat C visibility ½ mile.
▲ NA DME/DME RNP-0.3 NA. VDP NA with Ogden altimeter setting. Rwy 35 helicopter visibility reduction below ¾ SM NA.

MISSED APPROACH:
Climbing left turn to 7100 direct KONNE and hold.

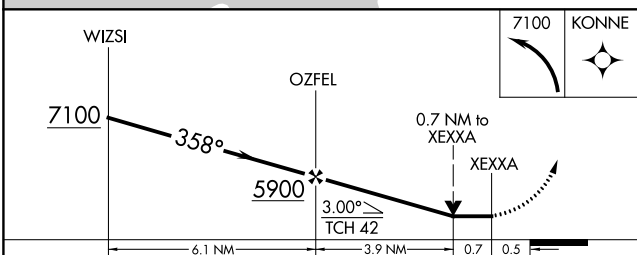
| | | | |
|--------------------------|---|--------------------------|----------------------------------|
| AWOS-3 135.075 | SALT LAKE CITY APP CON 121.1 319.25 | CLNC DEL 126.0 | UNICOM 123.05 (CTAF) 0 |
|--------------------------|---|--------------------------|----------------------------------|



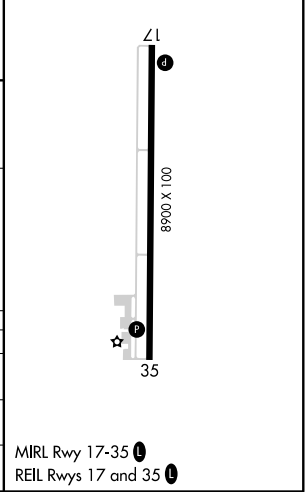
SW-4, 25 FEB 2021 to 25 MAR 2021

SW-4, 25 FEB 2021 to 25 MAR 2021

Procedure NA for arrivals on OGD VORTAC airway radials 302 CW 068.



| | |
|-----------|-----------|
| ELEV 4230 | TDZE 4230 |
|-----------|-----------|



| CATEGORY | A | B | C | D |
|----------|--------|-------------|-------------------------|----|
| LP MDA | 4660-1 | 430 (500-1) | 4660-1¼ 430 (500-1¼) | NA |
| LNAV MDA | 4900-1 | 670 (700-1) | 4900-1⅞ 670 (700-1⅞) | NA |
| CIRCLING | 4900-1 | 670 (700-1) | 5020-2¼ 790 (800-2¼) | NA |