

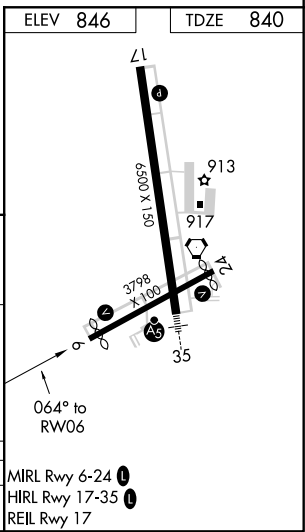
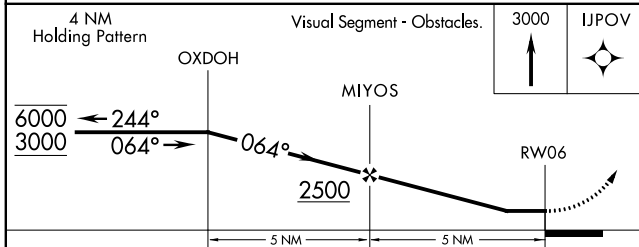
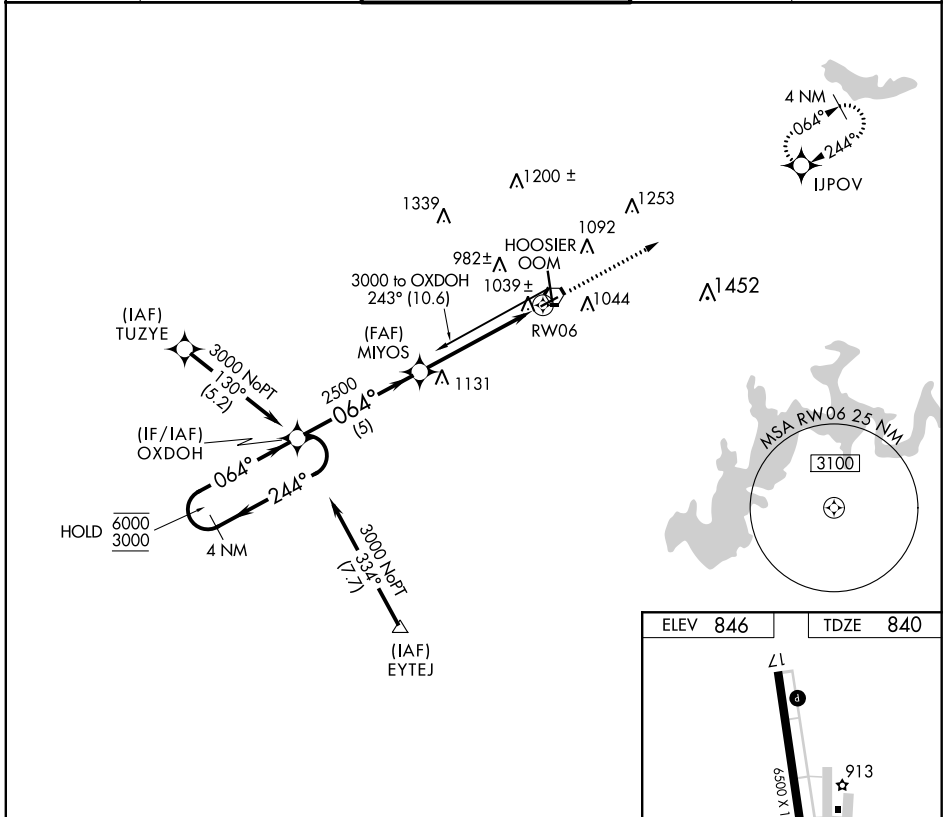
APP CRS	Rwy Idg	3494
064°	TDZE	840
	Apt Elev	846

RNAV (GPS) RWY 6

MONROE COUNTY (BMG)

RNP APCH.		MISSED APPROACH: Climb to 3000 direct IJPOV and hold.		
NA Procedure NA at night. Rwy 6 helicopter visibility reduction below 1 SM NA.				

ASOS 134.525	HULMAN APP CON 128.025 339.8	BLOOMINGTON TOWER * 120.775 (CTAF) 0	GND CON 121.9	UNICOM 122.95
------------------------	--	--	-------------------------	-------------------------



CATEGORY	A	B	C	D
INAV MDA	1300-1	460 (500-1)	1300-1¼ 460 (500-1¼)	1300-1½ 460 (500-1½)

ELEV 846	TDZE 840
MRL Rwy 6-24 HIRL Rwy 17-35 REIL Rwy 17	

EC-2, 25 FEB 2021 to 25 MAR 2021

EC-2, 25 FEB 2021 to 25 MAR 2021