

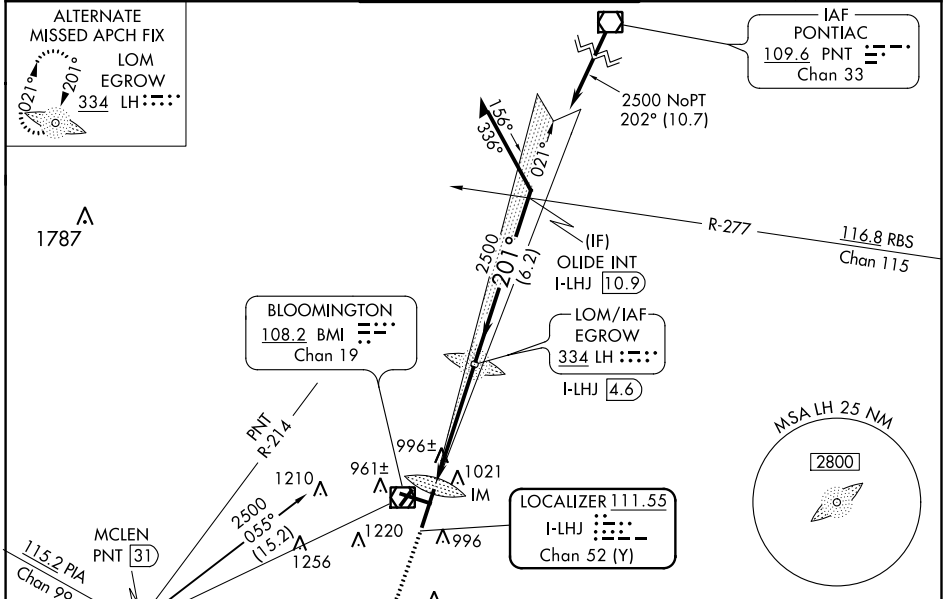
LOC/DME I-LHJ 111.55 Chan 52 (Y)	APP CRS 201°	Rwy Idg 8000 TDZE 871 Apt Elev 871
--	------------------------	---

ILS or LOC RWY 20

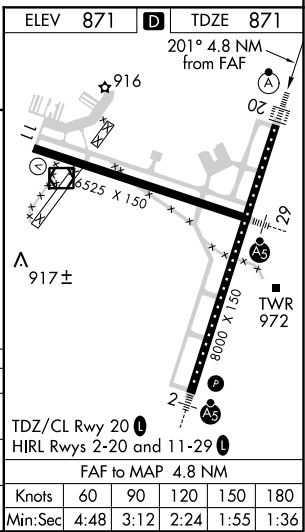
CENTRAL IL RGNL ARPT AT BLOOMINGTON-NORMAL (BMI)

<p>⚠ VDP NA when using General Downwing-Peoria Intl altimeter setting. When local altimeter setting not received, use General Downwing-Peoria Intl altimeter setting: increase all DA 116 feet and all MDA 120 feet; increase S-ILS all Cats visibility to RVR 2400, S-LOC Cat C and D visibility to RVR 5500, and Circling Cat C and D visibility ¼ mile. For inoperative ALSF-2 when using General Downwing-Peoria Intl altimeter setting increase ILS all Cats visibility to RVR 5000.</p>	<p>ALSF-2</p>	<p>MISSED APPROACH: Climb to 1500 then climbing right turn to 3000 on heading 270° and PNT VOR/DME R-214 to MCLEN INT/PNT 31 DME and hold.</p>
	<p>⚠ IAF PONTIAC 109.6 PNT Chan 33</p>	

ATIS 135.35	PEORIA APP CON 128.725 256.9	BLOOMINGTON TOWER * 124.6 (CTAF) 269.575	GND CON 121.65	UNICOM 122.95
-----------------------	--	--	--------------------------	-------------------------



1500	3000	MCLEN	LH LOM I-LHJ	2459	2500	2500
↑	hdg 270°	PNT R-214	I-LHJ 4.6			
*LOC only						
*I-LHJ 0.9						
IM						
0.2 0.9 3.7 NM						
Remain within 10 NM						
GS 3.00° TCH 58						



CATEGORY	A	B	C	D
S-ILS 20	1071/18		200 (200-½)	
S-LOC 20	1260/24	389 (400-½)	1260/35	389 (400-¾)
C CIRCLING	1340-1	469 (500-1)	1620-2¼ 749 (800-2¼)	1620-2½ 749 (800-2½)

EC-3, 25 FEB 2021 to 25 MAR 2021

EC-3, 25 FEB 2021 to 25 MAR 2021