

LOC/DME I-BNA <b>109.9</b> Chan 36	APP CRS <b>021°</b>	Rwy ldg TDZE Apt Elev	<b>7702</b> <b>599</b> <b>599</b>
--	------------------------	-----------------------------	---

# ILS RWY 2L (SA CAT I)

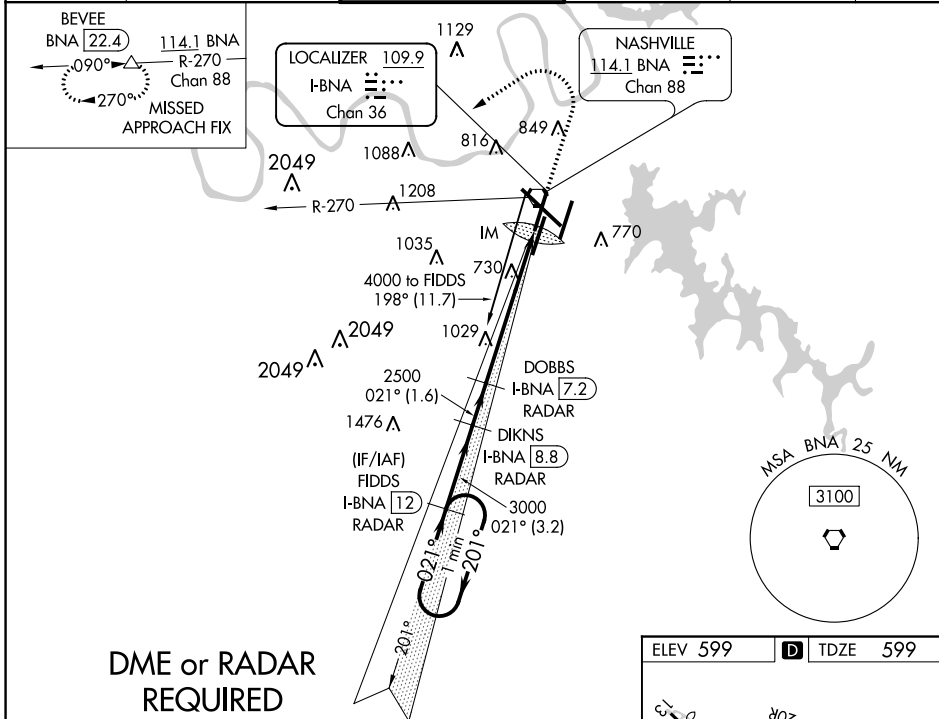
NASHVILLE INTL (BNA)

**▼** Simultaneous approach authorized with Rwy 2R.  
DME or radar required.  
**▲** Requires specific OPSPEC, MSPEC, or LOA approval and use of HUD to DH.

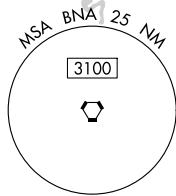
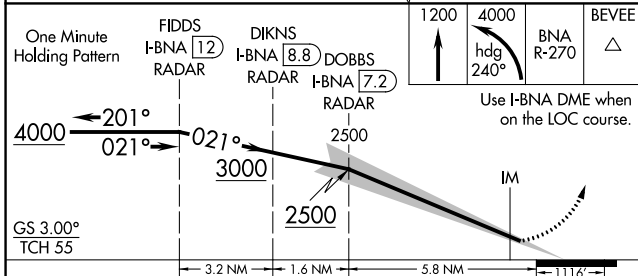


**MISSED APPROACH:** Climb to 1200 then climbing left turn to 4000 on heading 240° and on BNA VORTAC R-270 to BEVEE/BNA 22.4 DME and hold.

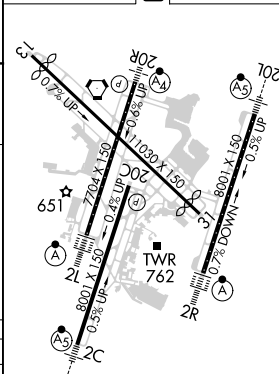
D-ATIS <b>135.1</b>	NASHVILLE APP CON <b>118.4 360.7</b>	NASHVILLE TOWER <b>118.6 257.8</b>	GND CON <b>121.9 348.6</b>	CLNC DEL <b>126.05</b>	CPDLC
------------------------	---	---------------------------------------	-------------------------------	---------------------------	-------



### DME or RADAR REQUIRED



ELEV 599 **D** TDZE 599



CATEGORY	A	B	C	D
S-ILS 2L	RA 159/14 150 DA 749			

## SA CATEGORY I ILS - SPECIAL AIRCREW & AIRCRAFT CERTIFICATION REQUIRED

HIRL all Rwy's  
TDZ/CL Rwy's 2L and 2R  
REIL Rwy's 13, 20C, and 31

SE-1, 25 FEB 2021 to 25 MAR 2021

SE-1, 25 FEB 2021 to 25 MAR 2021