

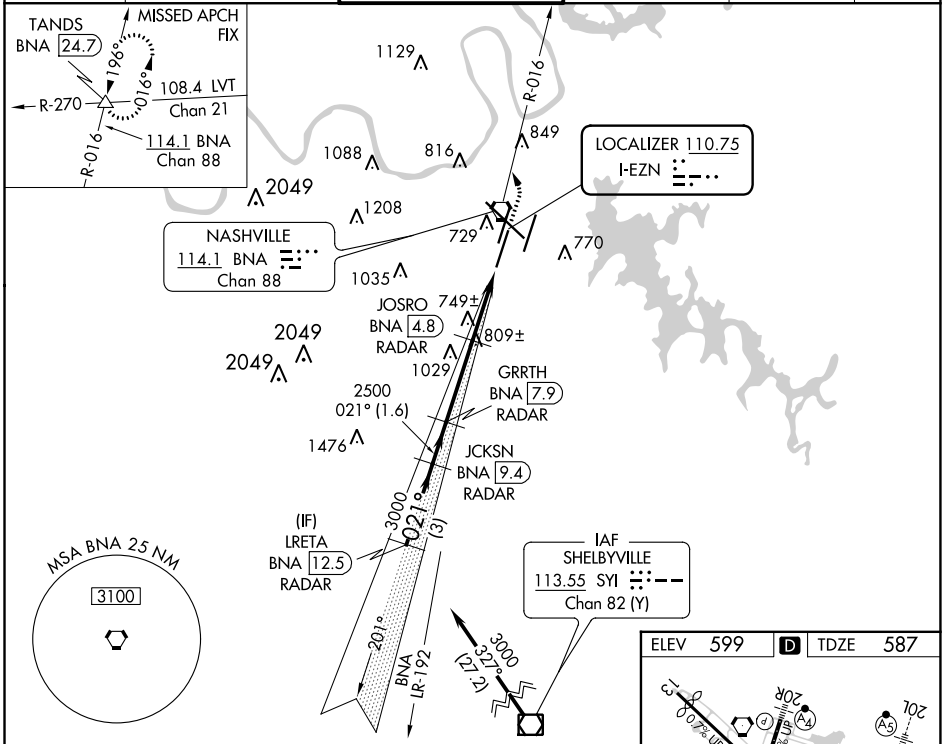
# ILS or LOC RWY 2C

NASHVILLE INTL (BNA)

LOC I-EZN <b>110.75</b>	APP CRS <b>021°</b>	Rwy Idg TDZE Apt Elev	<b>7601</b> <b>587</b> <b>599</b>
----------------------------	------------------------	-----------------------------	---

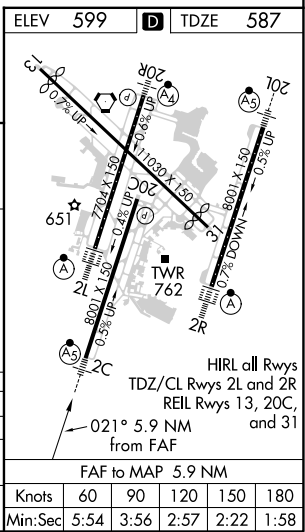
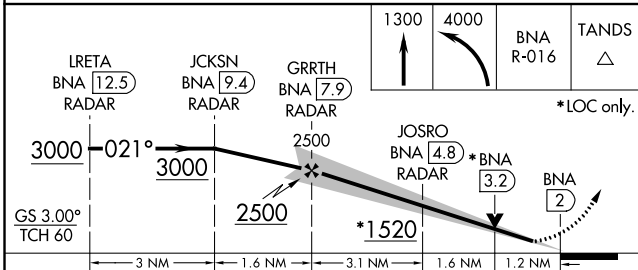
DME or RADAR required.		MALSR 	MISSED APPROACH: Climb to 1300 then climbing left turn to 4000 on BNA VORTAC R-016 to TANDS INT/BNA 24.7 and hold.	
▼ Simultaneous approach authorized. For inop ALS, increase S-LOC 2C Cats C and D visibility to RVR 6000. DME from BNA VORTAC. ▲ Simultaneous reception of I-EZN and BNA DME required. # RVR 1800 authorized with the use of FD or AP or HUD to DA.				

D-ATIS <b>135.1</b>	NASHVILLE APP CON <b>118.4 360.7</b>	NASHVILLE TOWER <b>118.6 257.8</b>	GND CON <b>121.9 348.6</b>	CLNC DEL <b>126.05</b>	CPDLC
------------------------	---	---------------------------------------	-------------------------------	---------------------------	-------



SE-1, 25 FEB 2021 to 25 MAR 2021

SE-1, 25 FEB 2021 to 25 MAR 2021



CATEGORY	A	B	C	D
S-ILS 2C #		787/24	200 (200-1/2)	
S-LOC 2C	1000/24	413 (500-1/2)	1000/40	413 (500-3/4)
CIRCLING	1100-1 501 (600-1)	1120-1 521 (600-1)	1200-1 3/4 601 (700-1 3/4)	1380-2 1/2 781 (800-2 1/2)