

LOC/DME I-SSX 109.35 Chan 30 (Y)	APP CRS 201°	Rwy Idg TDZE 8000 551 Apt Elev 599
---	------------------------	---

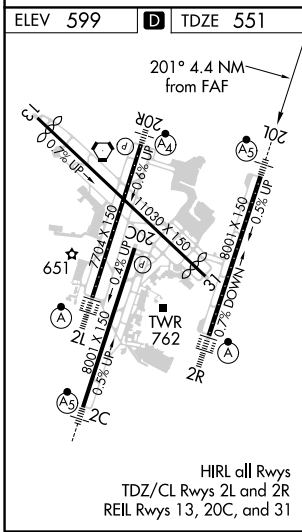
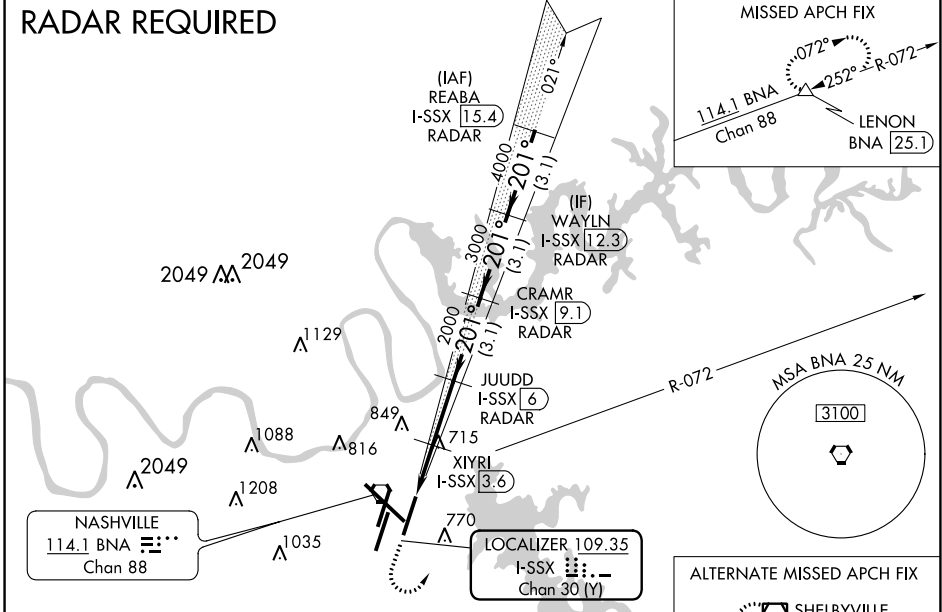
ILS or LOC/DME RWY 20L

NASHVILLE INTL (BNA)

<p>⚠ Simultaneous approach authorized with Rwy 20R. DME required. **RVR 1800 authorized with the use of FD or AP or HUD to DA.</p>	<p>MALSR </p>	<p>MISSED APPROACH: Climb to 1300 then climbing left turn to 3000 on heading 040° and BNA VORTAC R-072 to LENON/BNA 25.1 DME and hold.</p>
---	-------------------	--

D-ATIS 135.1	NASHVILLE APP CON 118.4 360.7	NASHVILLE TOWER 118.6 257.8	GND CON 121.9 348.6	CLNC DEL 126.05	CPDLC
------------------------	---	---------------------------------------	-------------------------------	---------------------------	-------

RADAR REQUIRED



ELEV 599	D TDZE 551				
<p>1300 3000 BNA R-072 LENON</p> <p>hdg 040°</p>		<p>WAYLN I-SSX 12.3 RADAR</p> <p>REABA I-SSX 15.4 RADAR</p>			
<p>*LOC only.</p> <p>I-SSX 1.6 I-SSX 2.8</p> <p>XIYRI I-SSX 3.6 JUUDD I-SSX 6 RADAR</p> <p>CRAMR I-SSX 9.1 RADAR</p>		<p>201° 5000</p> <p>2000 3000 4000</p> <p>GS 3.00° TCH 47</p>			
CATEGORY	A	B	C	D	
S-ILS 20L	** 751/24 200 (200-½)				
S-LOC 20L	980/24	429 (400-½)	980/40	429 (400-¾)	
C CIRCLING	1100-1 501 (600-1)	1120-1 521 (600-1)	1200-1¾ 601 (700-1¾)	1380-2½ 781 (800-2½)	

SE-1, 25 FEB 2021 to 25 MAR 2021

SE-1, 25 FEB 2021 to 25 MAR 2021