

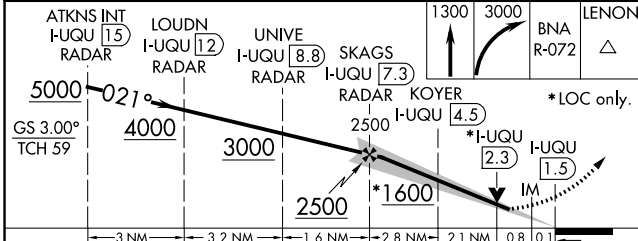
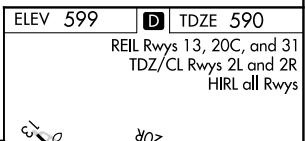
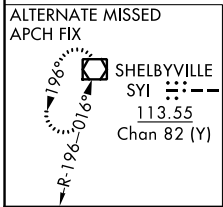
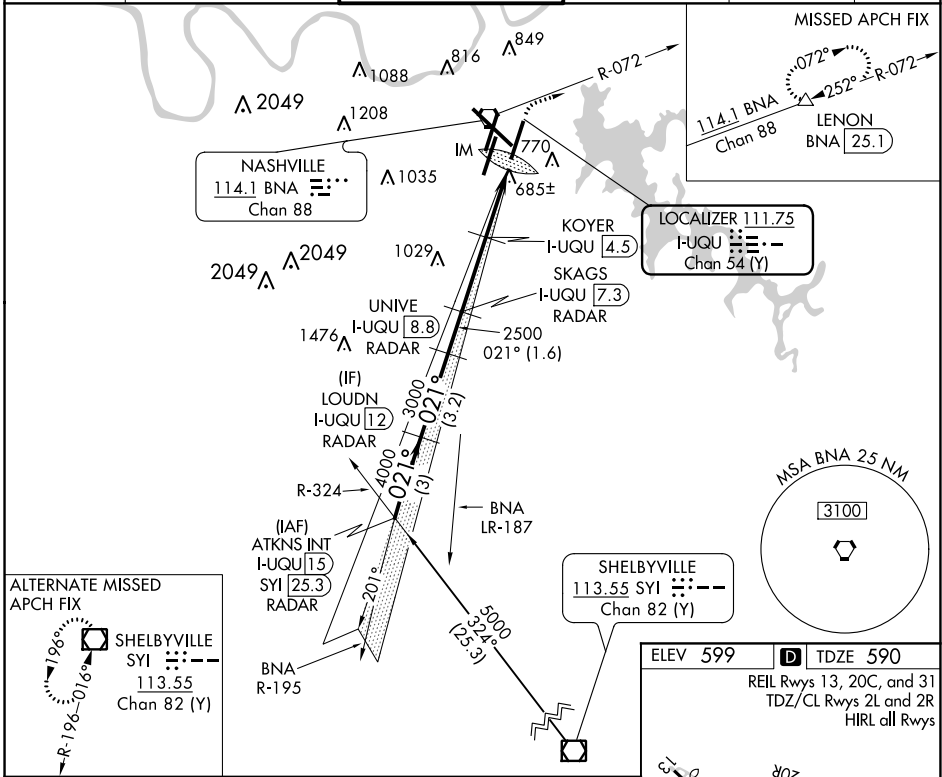
LOC/DME I-UQU <b>111.75</b> Chan <b>54 (Y)</b>	APP CRS <b>021°</b>	Rwy Idg TDZE Apt Elev	<b>8000</b> <b>590</b> <b>599</b>
--	------------------------	-----------------------------	---

# ILS or LOC/DME RWY 2R

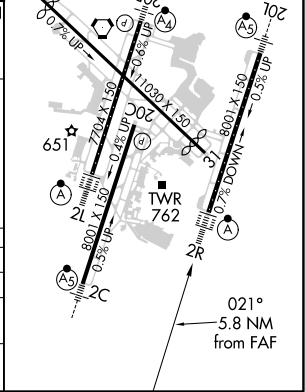
NASHVILLE INTL (BNA)

DME required.	ALSF-2	MISSED APPROACH: Climb to 1300 then climbing right turn to 3000 on BNA R-072 to LENON/BNA 25.1 DME and hold.
<p>Simultaneous approach authorized with Rwy 2L/C.</p> <p>For inop ALSF, increase S-LOC 2R Cats C/D visibility to RVR 5500.</p>		

D-ATIS <b>135.1</b>	NASHVILLE APP CON <b>118.4 360.7</b>	NASHVILLE TOWER <b>118.6 257.8</b>	GND CON <b>121.9 348.6</b>	CLNC DEL <b>126.05</b>	CPDLC
------------------------	---	---------------------------------------	-------------------------------	---------------------------	-------



CATEGORY	A	B	C	D
S-ILS 2R		790/18	200 (200-½)	
S-LOC 2R	940/24	350 (400-½)	940/30	350 (400-¾)
CIRCLING	1100-1 501 (600-1)	1120-1 521 (600-1)	1200-1¾ 601 (700-1¾)	1380-2½ 781 (800-2½)



SE-1, 25 FEB 2021 to 25 MAR 2021

SE-1, 25 FEB 2021 to 25 MAR 2021