


# RNAV (RNP) Z RWY 20R

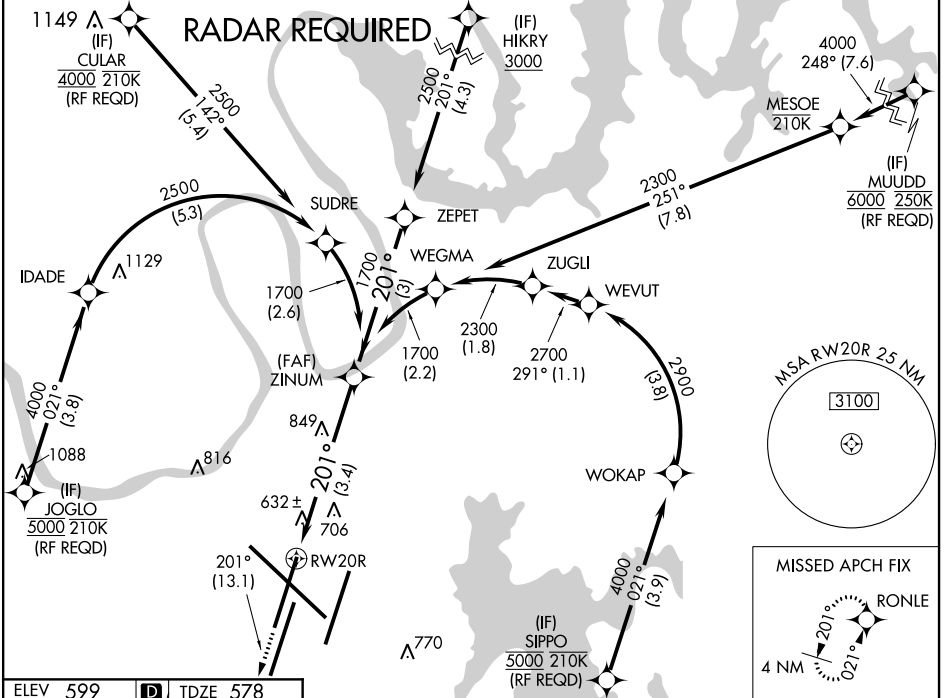
NASHVILLE INTL (BNA)

APP CRS	Rwy Idg	<b>7702</b>
<b>201°</b>	TDZE	<b>578</b>
	Apt Elev	<b>599</b>

**GPS required. Simultaneous approach authorized with Rwy 20L. Use of FD or AP providing RNAV track guidance required during simultaneous operations. For unpenalized Baro-VNAV systems, procedure NA below -11°C (13°F) or above 54°C (130°F). For inoperative MALSF, increase RNP 0.18 all Cats visibility to RVR 5600 and RNP 0.30 all Cats visibility to 1½.**

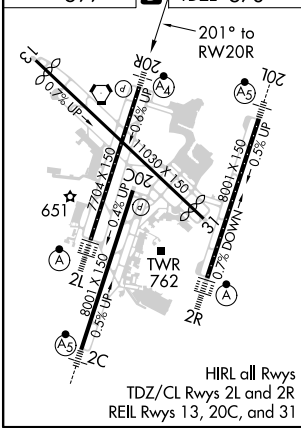
**MALSF**  
  
**MISSED APPROACH:**  
 Climb to 3000 on track 201° to RONLE and hold.

D-ATIS <b>135.1</b>	NASHVILLE APP CON <b>118.4 360.7</b>	NASHVILLE TOWER <b>118.6 257.8</b>	GND CON <b>121.9 348.6</b>	CLNC DEL <b>126.05</b>	CPDLC
------------------------	---	---------------------------------------	-------------------------------	---------------------------	-------

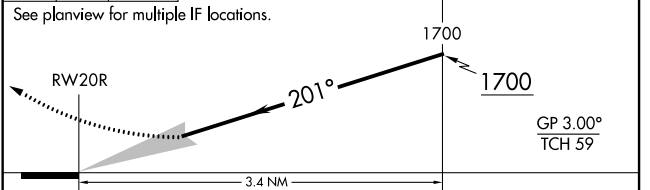


SE-1, 25 FEB 2021 to 25 MAR 2021

SE-1, 25 FEB 2021 to 25 MAR 2021



3000 tr 201° RONLE  
 VGSI and RNAV glidepath not coincident (VGSI Angle 3.00/TCH 79).



CATEGORY	A	B	C	D
RNP 0.18 DA		927/42	349 (400-7%)	
RNP 0.30 DA		1042/60	464 (500-1¼)	

## AUTHORIZATION REQUIRED