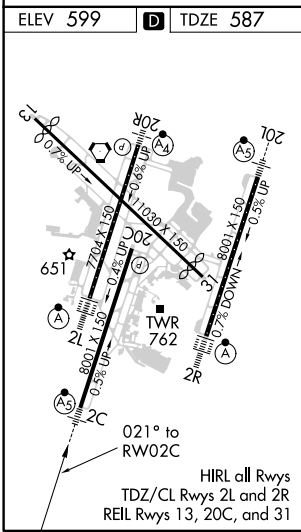
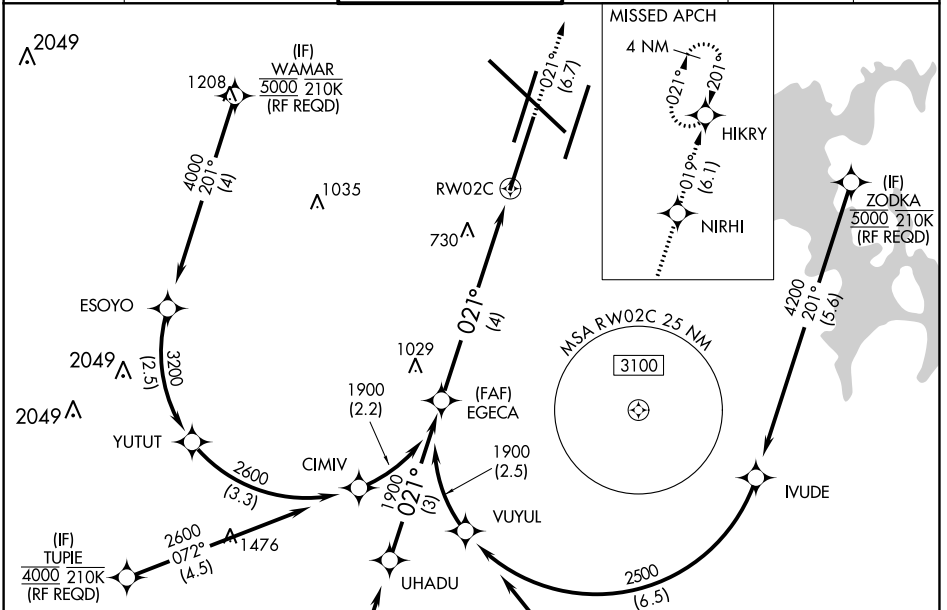


APP CRS	Rwy Idg	7601
021°	TDZE	587
	Apt Elev	599

RNAV (RNP) Z RWY 2C

NASHVILLE INTL (BNA)

<p>▽ For uncompensated Baro-VNAV systems, procedure NA below -11°C (13°F) or above 54°C (130°F). GPS required. Simultaneous approach authorized with Rwy 2R. Use of FD or AP providing RNAV track guidance required during simultaneous operations. For inop MALSR, increase RNP 0.30 visibility to 1½ mile.</p>		<p>MALSR</p>	<p>MISSED APPROACH: Climb to 4000 on track 021° to NIRHI and on track 019° to HIKRY and hold, continue climb-in-hold to 4000.</p>		
D-ATIS	NASHVILLE APP CON	NASHVILLE TOWER	GND CON	CLNC DEL	CPDLC
135.1	118.4 360.7	118.6 257.8	121.9 348.6	126.05	



EGCEA	4000	NIRHI	HIKRY
1900	tr 021°	tr 019°	
1900			
GP 3.00°			
TCH 60			
	See planview for multiple IF locations.		
	4 NM		
CATEGORY	A	B	C
RNP 0.15 DA		882/24	295 (300-½)
RNP 0.30 DA		1067/57	480 (500-1½)

AUTHORIZATION REQUIRED

SE-1, 25 FEB 2021 to 25 MAR 2021

SE-1, 25 FEB 2021 to 25 MAR 2021