

APP CRS	Rwy Idg	<b>8000</b>
<b>021°</b>	TDZE	<b>590</b>
	Apt Elev	<b>599</b>

# RNAV (RNP) Z RWY 2R

NASHVILLE INTL (BNA)

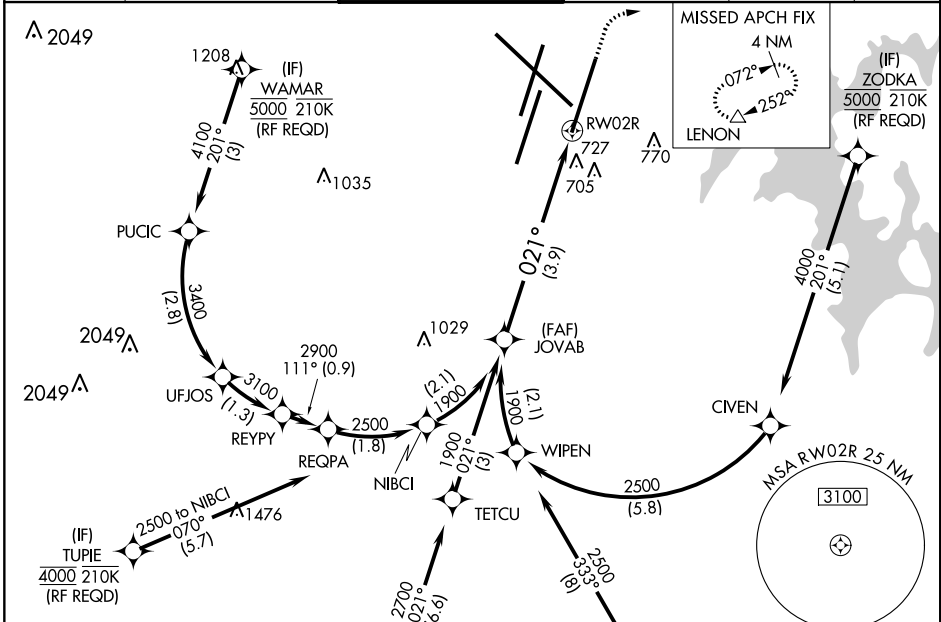
**RNP AR APCH.**

For uncompensated Baro-VNAV systems, procedure NA below -11°C or above 54°C.  
 For inoperative ALSF-2, increase RNP 0.15 all Cats visibility to RVR 5600, RNP 0.30 all Cats visibility to 1 3/8 mile. Simultaneous approach authorized with Rwy 2L/C. Use of FD or AP providing RNAV track guidance required during simultaneous operations.

**ALSF-2**

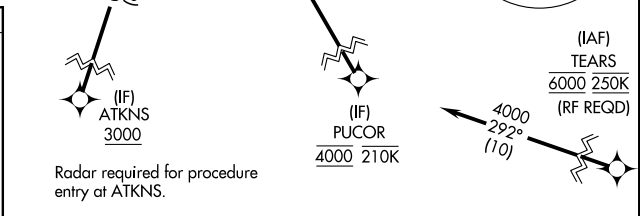
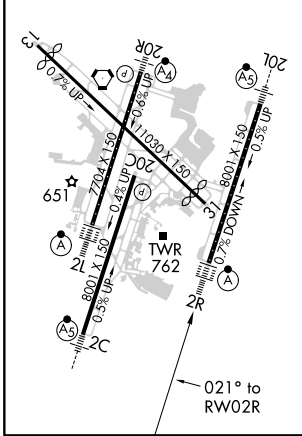
**MISSED APPROACH:**  
 Climb to 1300 then climbing right turn to 4000 direct LENON and hold.

D-ATIS	NASHVILLE APP CON	NASHVILLE TOWER	GND CON	CLNC DEL	CPDLC
<b>135.1</b>	<b>118.4 360.7</b>	<b>118.6 257.8</b>	<b>121.9 348.6</b>	<b>126.05</b>	



ELEV 599	<b>D</b>	TDZE 590
----------	----------	----------

HIRL all Rwys  
 TDZ/CL Rwys 2L and 2R  
 REIL Rwys 13, 20C, and 31



GP 3.00°	TCH 59	3.9 NM
See planview for multiple IF locations.		

CATEGORY	A	B	C	D
RNP 0.15 DA		938/40	348 (400-3/4)	
RNP 0.30 DA		1024/48	434 (500-1)	

**AUTHORIZATION REQUIRED**

SE-1, 25 FEB 2021 to 25 MAR 2021

SE-1, 25 FEB 2021 to 25 MAR 2021