


WAAS CH 49013 W20D	APP CRS 201°	Rwy Idg 8000 TDZE 551 Apt Elev 599
--	------------------------	---

RNAV (GPS) Y RWY 20L

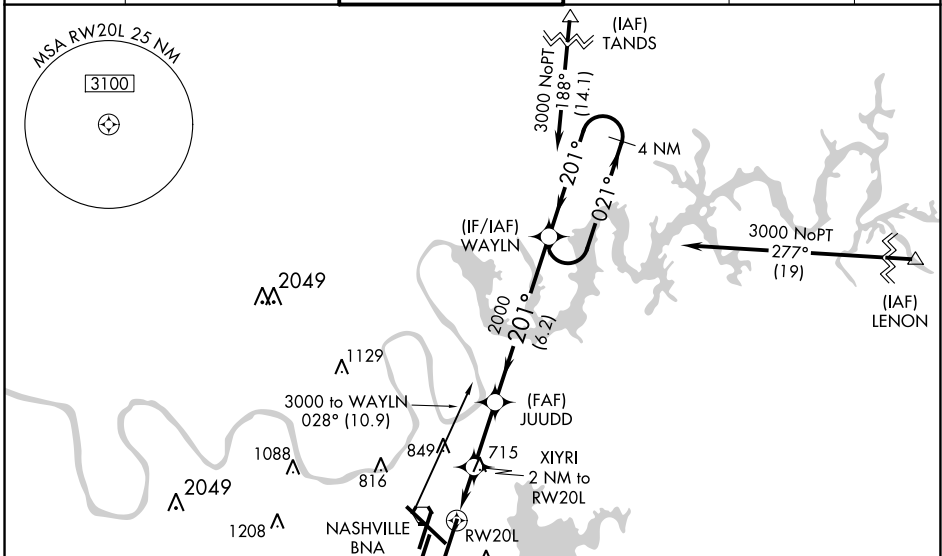
NASHVILLE INTL (BNA)

⚠ For uncompensated Baro-VNAV systems, procedure NA below -11°C (13°F) or above 54°C (130°F), DME/DME RNP-0.3 NA. Simultaneous approach authorized with Rwy 20R. LNAV procedure NA during simultaneous operations. Use of FD or AP providing RNAV track guidance required during simultaneous operations. For inop MALS/R, increase LNAV/VNAV all Cats visibility to 1%. ** RVR 1800 authorized with use of FD or AP or HUD to DA.

MALS/R


MISSED APPROACH:
Climb to 1300 then climbing left turn to 4000 direct CENOP and hold.

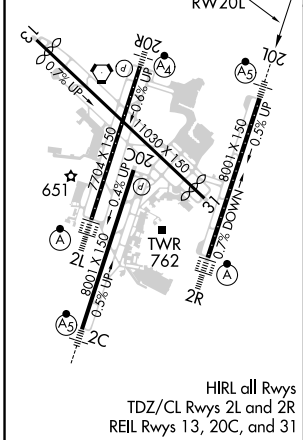
D-ATIS 135.1	NASHVILLE APP CON 118.4 360.7	NASHVILLE TOWER 118.6 257.8	GND CON 121.9 348.6	CLNC DEL 126.05	CPDLC
------------------------	---	---------------------------------------	-------------------------------	---------------------------	-------



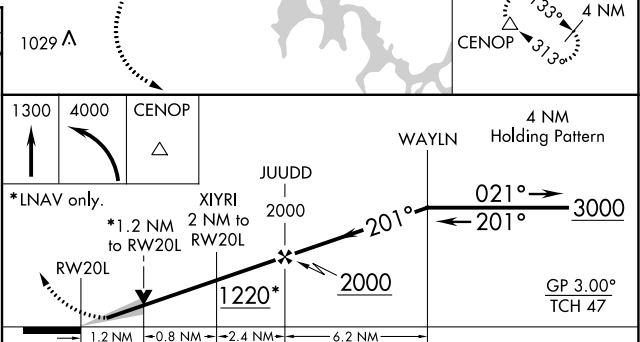
SE-1, 25 FEB 2021 to 25 MAR 2021

SE-1, 25 FEB 2021 to 25 MAR 2021

ELEV 599	D	TDZE 551
----------	----------	----------



HIRL all Rwys
TDZ/CL Rwys 2L and 2R
REIL Rwys 13, 20C, and 31



CATEGORY	A	B	C	D
LPV DA		** 751/24	200 (200-½)	
LNAV/VNAV DA		1025/58	474 (500-1¼)	
LNAV MDA	980/24	429 (400-½)	980/40	429 (400-¾)
C CIRCLING	1100-1 501 (600-1)	1120-1 521 (600-1)	1200-1¾ 601 (700-1¾)	1380-2½ 781 (800-2½)