

WAAS CH 78411 W20A	APP CRS 201°	Rwy Idg TDZE Apt Elev	7702 578 599
--	------------------------	-----------------------------	---

RNAV (GPS) Y RWY 20R

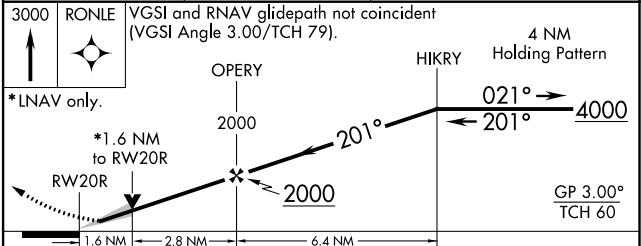
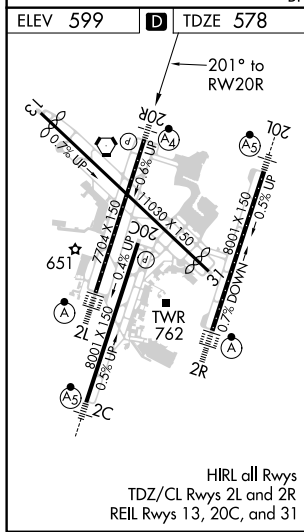
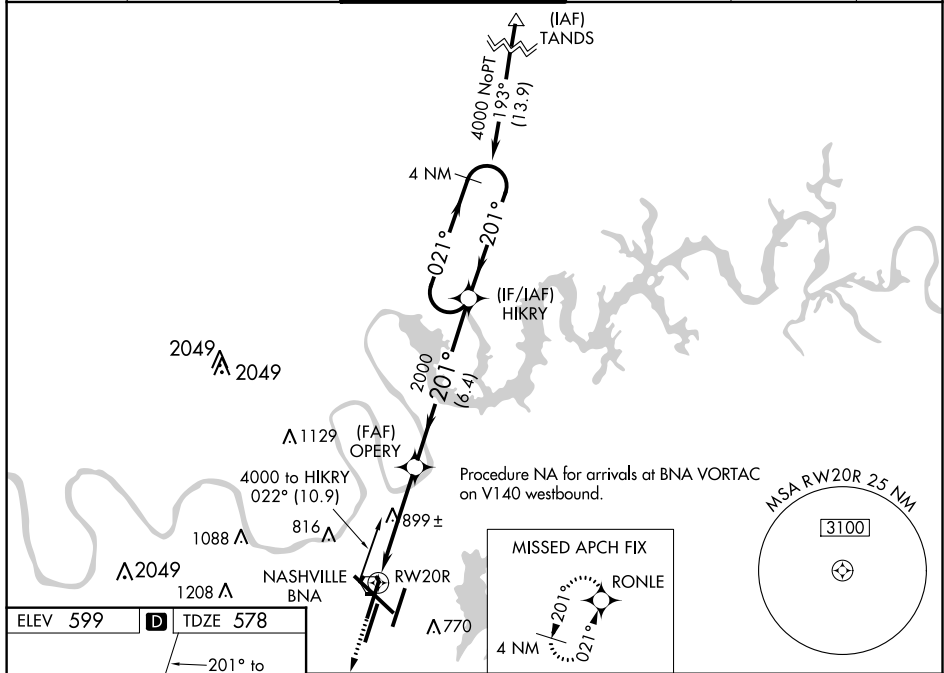
NASHVILLE INTL (BNA)

⚠ For uncompensated Baro-VNAV systems, LNAV/VNAV NA below -11°C (13°F) or above 54°C (130°F). Use of FD or AP providing RNAV track guidance required during simultaneous operations. Simultaneous approach authorized with Rwy 20L. LNAV procedure NA during simultaneous operations. DME/DME RNP-0.3 NA. For inop ALS, increase LNAV/VNAV Cat D visibility to 1½ SM and LNAV Cats C and D visibility to 1¼ SM.



MISSED APPROACH:
Climb to 3000 direct
RONLE and hold.

D-ATIS 135.1	NASHVILLE APP CON 118.4 360.7	NASHVILLE TOWER 118.6 257.8	GND CON 121.9 348.6	CLNC DEL 126.05	CPDLC
------------------------	---	---------------------------------------	-------------------------------	---------------------------	-------



CATEGORY	A	B	C	D
LPV DA	778/40		200 (200-¾)	
LNAV/VNAV DA	1038-1½		460 (500-1½)	
LNAV MDA	1160/40	582 (600-¾)	1160-1½	582 (600-1½)
C CIRCLING	1160-1	561 (600-1)	1200-1¾ 601 (700-1¾)	1380-2½ 781 (800-2½)

SE-1, 25 FEB 2021 to 25 MAR 2021

SE-1, 25 FEB 2021 to 25 MAR 2021