


WAAS CH 70613 W02B	APP CRS 021°	Rwy Idg TDZE Apt Elev	7601 587 599
--	------------------------	-----------------------------	---

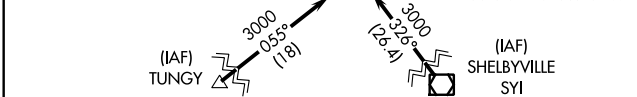
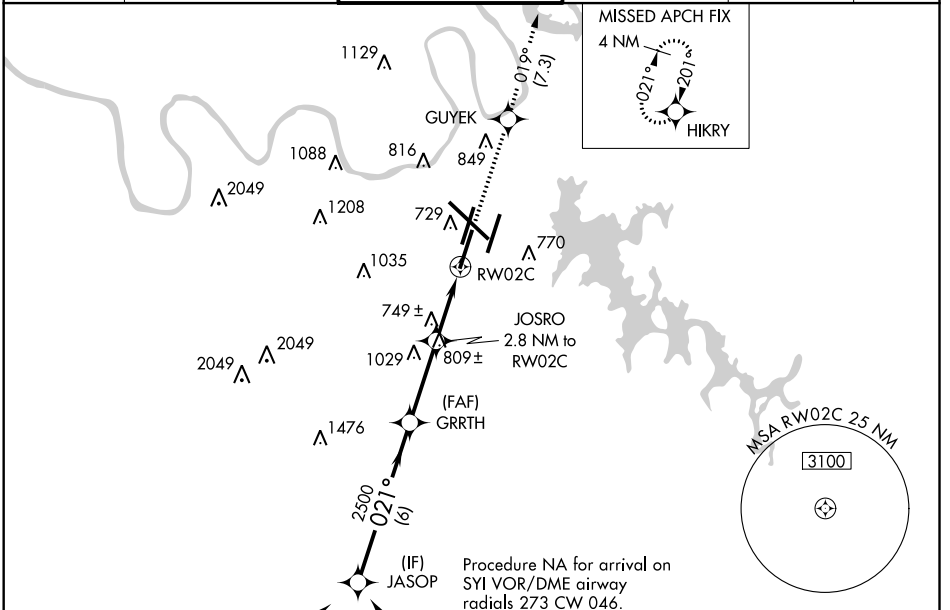
RNAV (GPS) Y RWY 2C

NASHVILLE INTL (BNA)

▽ For uncompensated Baro-VNAV systems, LNAV/VNAV NA below -11°C (13°F) or above 54°C (130°F). Use of FD or AP providing RNAV track guidance required during simultaneous operations.
▲ LNAV procedure NA during simultaneous operations. Simultaneous approach authorized with Rwy 2R. DME/DME RNP-0.3 NA.
 ** RVR 1800 authorized with use of FD or AP or HUD to DA.

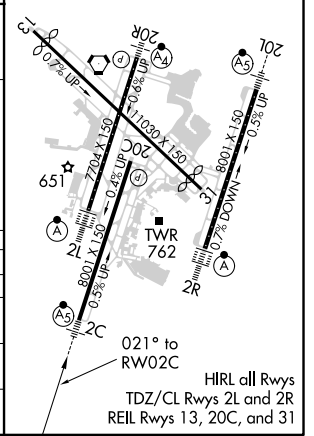
MALSR

 MISSED APPROACH: Climb to 4000 direct GUYEK and on track 019° to HIKRY and hold, continue climb-in-hold to 4000.

D-ATIS 135.1	NASHVILLE APP CON 118.4 360.7	NASHVILLE TOWER 118.6 257.8	GND CON 121.9 348.6	CLNC DEL 126.05	CPDLC
------------------------	---	---------------------------------------	-------------------------------	---------------------------	-------



ELEV 599	D TDZE 587
----------	-------------------

	JASOP	GRRTH	JOSRO 2.8 NM to RW02C	GUYEK	Tr 019°	HIKRY
	3000	2500	*1520	4000		
	GP 3.00° TCH 60	021°	*1.2 NM to RW02C			
CATEGORY	A	B	C	D	*LNAV only	
LPV DA**	787/24		200 (200-½)			
LNAV/VNAV DA	1059/60		472 (500-¼)			
LNAV MDA	1000/24	413 (500-½)	1000/40	413 (500-¾)		
C CIRCLING	1100-1 501 (600-1)	1120-1 521 (600-1)	1200-1¾ 601 (700-1¾)	1380-2½ 781 (800-2½)		



SE-1, 25 FEB 2021 to 25 MAR 2021

SE-1, 25 FEB 2021 to 25 MAR 2021