

APP CRS	Rwy Idg	5100
297°	TDZE	4148
	Apt Elev	4159

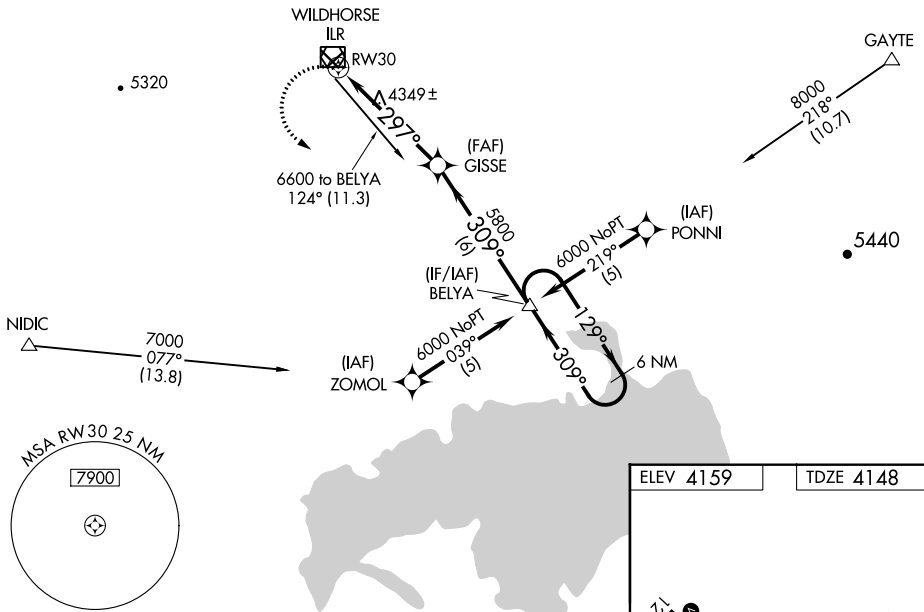
RNAV (GPS) RWY 30

BURNS MUNI (BNO)

DME/DME RNP- 0.3 NA.		MISSED APPROACH: Climbing left turn to 6000 direct BELYA and hold.
----------------------	--	--

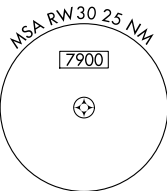
ASOS 135.575	SALT LAKE CENTER 128.05 306.95	UNICOM 122.8 (CTAF)
------------------------	--	-------------------------------

Procedure NA for arrivals on ILR VOR/DME airway radial 123.

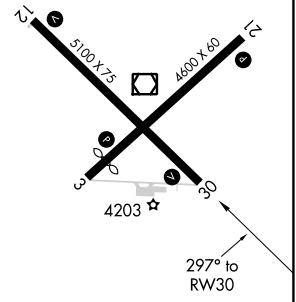
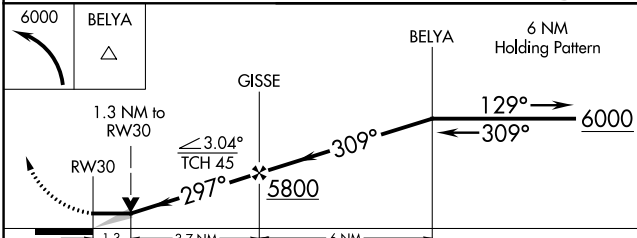


NW-1, 25 FEB 2021 to 25 MAR 2021

NW-1, 25 FEB 2021 to 25 MAR 2021



ELEV 4159	TDZE 4148
-----------	-----------



CATEGORY	A	B	C	D
LNVA MDA	4600-1	452 (500-1)	4600-1½ 452 (500-1½)	4600-1½ 452 (500-1½)
CIRCLING	4600-1 441 (500-1)	4680-1 521 (600-1)	4680-1½ 521 (600-1½)	4720-2 561 (600-2)

REIL Rwy's 3, 12, 21 and 30
MIRL Rwy's 3-21 and 12-30