

# HI-ILS Z or LOC Z RWY 10R

LOC I-BOI <b>111.1</b>	APCH CRS <b>102°</b>	Rwy Ldg TDZE Arprt Elev <b>9763</b> <b>2836</b> <b>2871</b>
---------------------------	-------------------------	--

JAL-57 [USAF]

BOISE AIR TERMINAL (GOWEN FLD) (KBOI)

\* When ALS inop, increase RVR to 40 and vis to 3/4 mile.  
 \*\* When ALS inop, increase RVR to 55 and vis to 1 1/2 miles.

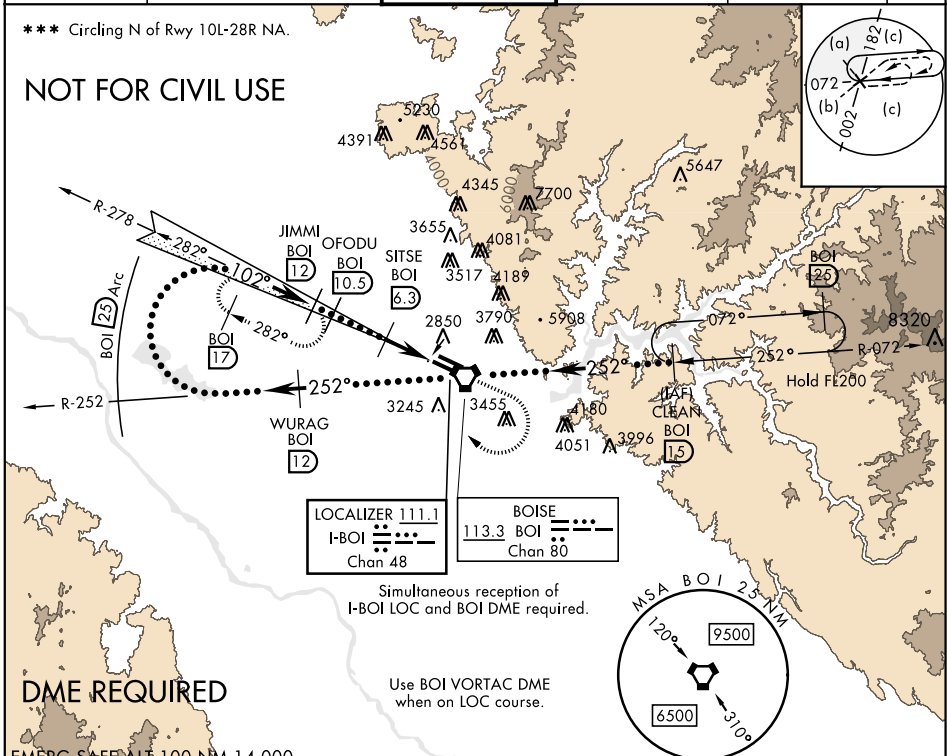


MISSED APPROACH: Climb to 3700 then climbing right turn to 5000 on heading 320° and BOI VORTAC R-278 to JIMMI BOI 12 DME and hold.

ATIS <b>123.9 290.4</b>	BIG SKY APP CON <b>119.6 269.4</b>	BOISE TOWER <b>118.1 257.8</b>	GND CON <b>121.7 348.6</b>	CLNC DEL <b>125.9 323.2</b>	ASOS
----------------------------	---------------------------------------	-----------------------------------	-------------------------------	--------------------------------	------

\*\*\* Circling N of Rwy 10L-28R NA.

## NOT FOR CIVIL USE



### DME REQUIRED

EMERG SAFE ALT 100 NM 14,000

3700	5000	JIMMI BOI 12	WURAG BOI R-252 12	VGSI and ILS glidepath not coincident (VGSI angle 3.00%/55)	CLEAN R-072 BOI 15	ELEV 2871	TDZE 2836
↑	hdg 320°						
Right at 12,000 remain within 25 NM of BOI VORTAC		JIMMI BOI 12	OFODU BOI 10.7	SITSE BOI 6.3	BOI 3.4	AVVVUV BOI 2.7	
GS 3.00° TCH 58		5900	5500	4100	4028		
CATEGORY	C			3.6 NM	0.3		E
S-ILS 10R *		3036/18	200	(200-1/2)			
S-LOC 10R **		3180/30	344	(400-3/4)			
CIRCLING ***	3740-2 1/2	869 (900-2 1/2)	3820-3	949	(1000-3)		
						TDZL/CL Rwy 10R-28L	
						HIRL Rwy 10L-28R, 10R-28L	
						REIL Rwy 10L	
						TWR 3136	

# HI-ILS Z or LOC Z RWY 10R

NW-1, 25 FEB 2021 to 25 MAR 2021

NW-1, 25 FEB 2021 to 25 MAR 2021