

BOISE, IDAHO

# HI-VOR/DME or TACAN RWY 10R

VORTAC BOI <b>113.3</b> Chan <b>80</b>	APCH CRS <b>098°</b>	Rwy ldg <b>9763</b> TDZE <b>2836</b> Arprt Elev <b>2871</b>
--	-------------------------	---

JAL-57 [USAF]

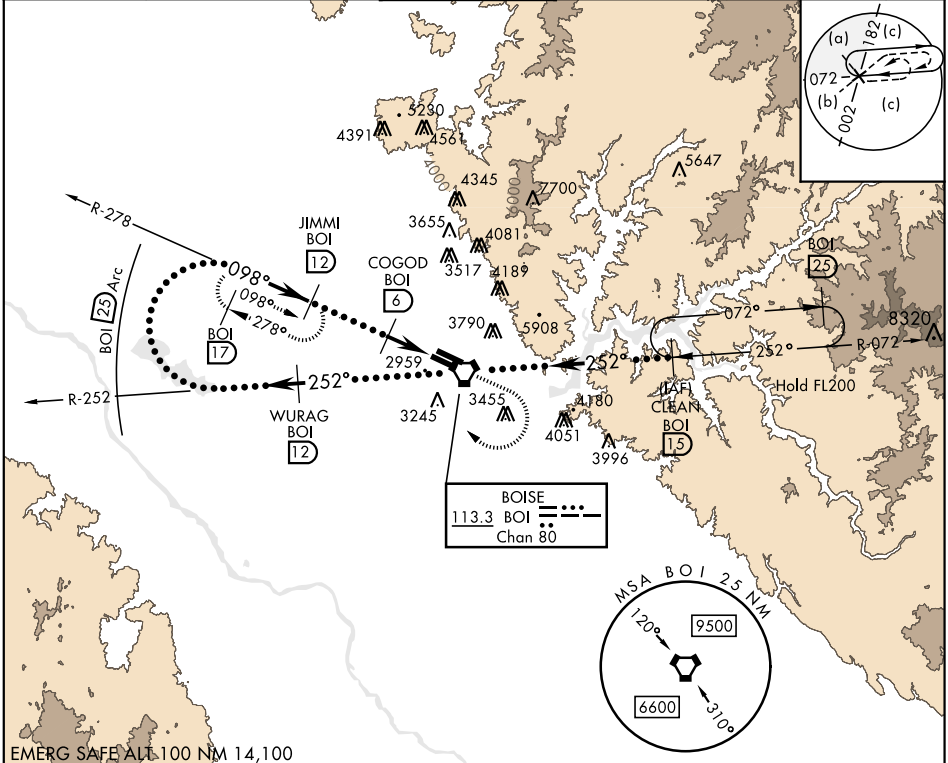
BOISE AIR TERMINAL (GOWEN FLD) (KBOI)

▼ \* When ALS inop, increase CAT DE RVR to 60 and vis to 1¼ miles.  
\*\* Circling N of Rwy 10L-28R NA.



MISSED APPROACH: Climb to 3700 then climbing right turn to 5000 via heading 320° to intercept BOI VORTAC R-278 then direct JIMMI/12 DME and hold

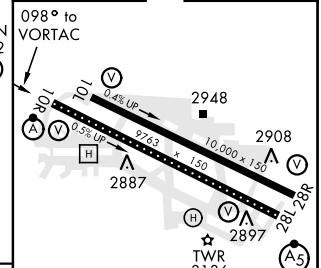
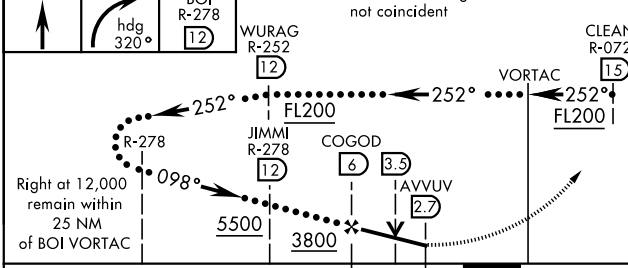
ATIS <b>123.9 290.4</b>	BIG SKY APP CON <b>119.6 269.4</b>	BOISE TOWER <b>118.1 257.8</b>	GND CON <b>121.7 348.6</b>	CLNC DEL <b>125.9 323.2</b>	ASOS
----------------------------	---------------------------------------	-----------------------------------	-------------------------------	--------------------------------	------



NW-1, 25 FEB 2021 to 25 MAR 2021

NW-1, 25 FEB 2021 to 25 MAR 2021

EMERG SAFE ALT 100 NM 14,100



	C	D	E
S-10R *	3220/24 384 (400-½)	3220/50	384 (400-1)
CIRCLING **	3440-1½ 569 (600-1½)	3440-2 569 (600-2)	3860-3 989 (1000-3)

ELEV 2871	TDZE 2836
TDZL/CL Rwy 10R-28L	
HIRL Rwy 10L-28R, 10R-28L	
REIL Rwy 10L	

BOISE, IDAHO 43°34'N-116°13'W BOISE AIR TERMINAL (GOWEN FLD) (KBOI)

Amdt 1 07MAR13

# HI-VOR/DME or TACAN RWY 10R