

BOISE, IDAHO

VORTAC BOI <b>113.3</b> Chan <b>80</b>	APCH CRS <b>278°</b>	Rwy Idg TDZE Arprt Elev <b>2871</b>	28L <b>9763</b> 28L <b>2858</b>	28R <b>10,000</b> 28R <b>2871</b>
--	-------------------------	--	------------------------------------	--------------------------------------

**HI-VOR/DME or TACAN RWY 28L**

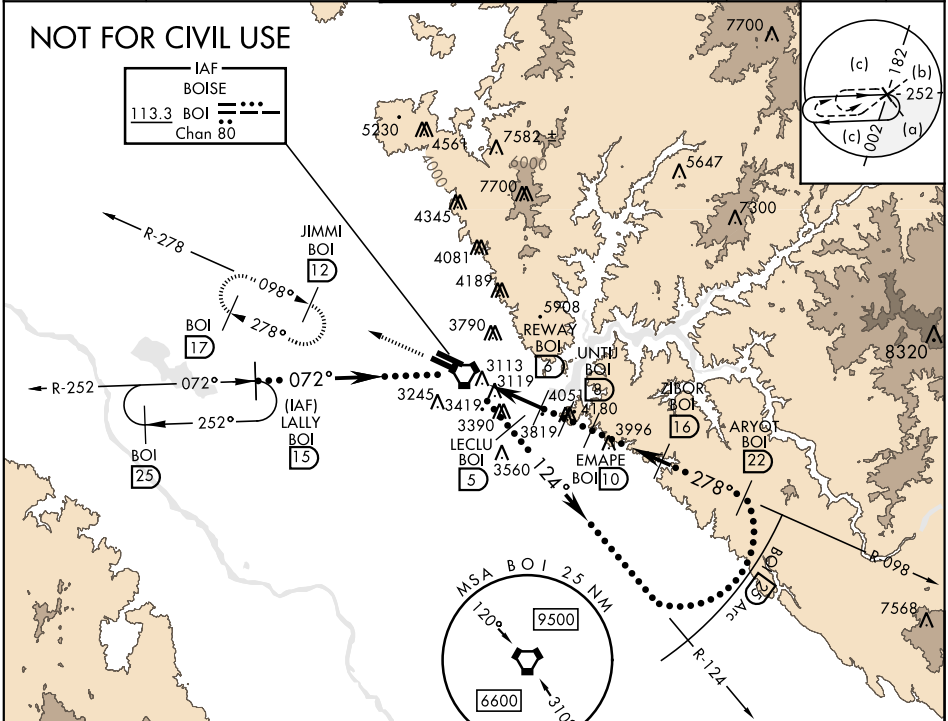
JAL-57 [USAF]  
BOISE AIR TERMINAL (GOWEN FLD) (KBOI)

\* When ALS inop, increase CAT C vis to 1½ miles,  
 CAT DE vis to 1¾ miles.  
 \*\* Circling N of Rwy 10L-28R NA.

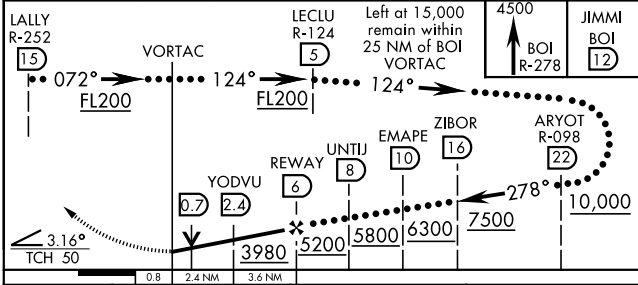


MISSED APPROACH: Climb to 4500 via BOI VORTAC  
R-278 to JIMMI and hold.

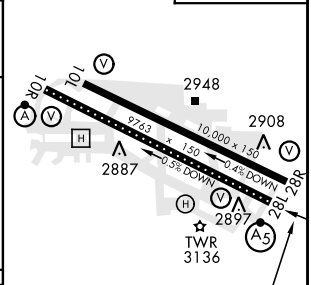
ATIS <b>123.9 290.4</b>	BIG SKY APP CON <b>119.6 269.4</b>	BOISE TOWER <b>118.1 257.8</b>	GND CON <b>121.7 348.6</b>	CLNC DEL <b>125.9 323.2</b>	ASOS
----------------------------	---------------------------------------	-----------------------------------	-------------------------------	--------------------------------	------



EMERG SAFE ALT 100 NM 14,100



ELEV 2871	TDZE 28L 2858
	TDZE 28R 2871



CATEGORY	C	D	E
S-28L *	3380/50 522 (600-1)	3380/60	522 (600-1¼)
SIDESTEP RWY 28R	3380-1¼ 509 (600-1¼)	3380-2¼	509 (600-2¼)
CIRCLING**	3440-1½ 569 (600-1½)	3440-2 569 (600-2)	3820-3 949 (1000-3)

TDZL/CL Rwy 10R-28L  
HIRL Rwy 10L-28R, 10R-28L  
REIL Rwy 10L

BOISE, IDAHO 43°34'N-116°13'W BOISE AIR TERMINAL (GOWEN FLD) (KBOI)

Amtd 3 07MAR13

**HI-VOR/DME or TACAN RWY 28L**

NW-1, 25 FEB 2021 to 25 MAR 2021

NW-1, 25 FEB 2021 to 25 MAR 2021