

LOC/DME I-AAD <b>110.15</b> Chan 38(Y)	APP CRS <b>282°</b>	Rwy ldg <b>10000</b> TDZE <b>2871</b> Apt Elev <b>2871</b>
--	------------------------	---

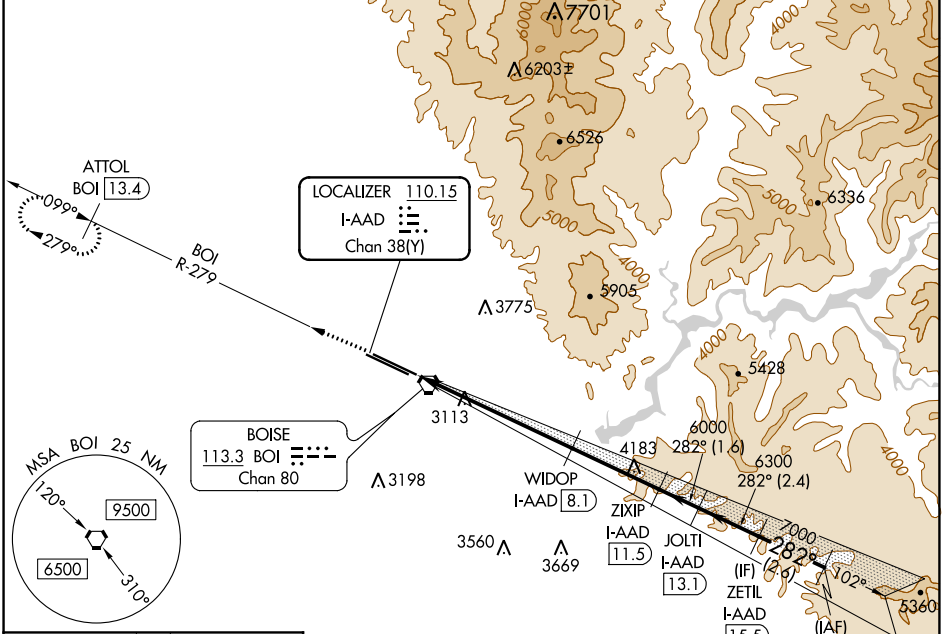
# ILS or LOC RWY 28R

BOISE AIR TERMINAL/GOWEN FIELD (BOI)

**⚠** Circling NA north of Rwy 10L-28R. DME required.

MISSED APPROACH: Climb to 6000 on BOI VORTAC R-279 to ATTOL/BOI 13.4 DME and hold.

D-ATIS <b>123.9 290.4</b>	BIG SKY APP CON <b>119.6 269.4</b>	BOISE TOWER <b>118.1 257.8</b>	GND CON <b>121.7 348.6</b>	CLNC DEL <b>125.9 323.2</b>
------------------------------	---------------------------------------	-----------------------------------	-------------------------------	--------------------------------

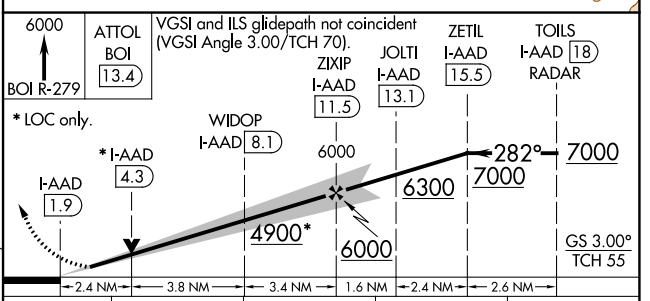
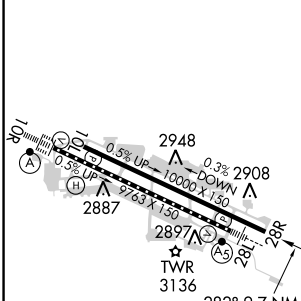


NW-1, 25 FEB 2021 to 25 MAR 2021

NW-1, 25 FEB 2021 to 25 MAR 2021

ELEV <b>2871</b>	<b>D</b>	TDZE <b>2871</b>
------------------	----------	------------------

## RADAR and DME REQUIRED



CATEGORY	A	B	C	D
S-ILS 28R	3121-¾ 250 (300-¾)			
S-LOC 28R	3700-1 829 (900-1)	3700-1¼ 829 (900-1¼)	3700-2½ 829 (900-2½)	829 (900-2½)
<b>C</b> CIRCLING	3700-1¼ 829 (900-1¼)	3740-2½ 869 (900-2½)	3820-3 949 (1000-3)	

REIL Rwy 10L  
TDZ/CL Rws 10R and 28L  
HIRL Rws 10L-28R and 10R-28L

BOISE AIR TERMINAL/GOWEN FIELD (BOI)

43°34'N-116°13'W

# ILS or LOC RWY 28R