

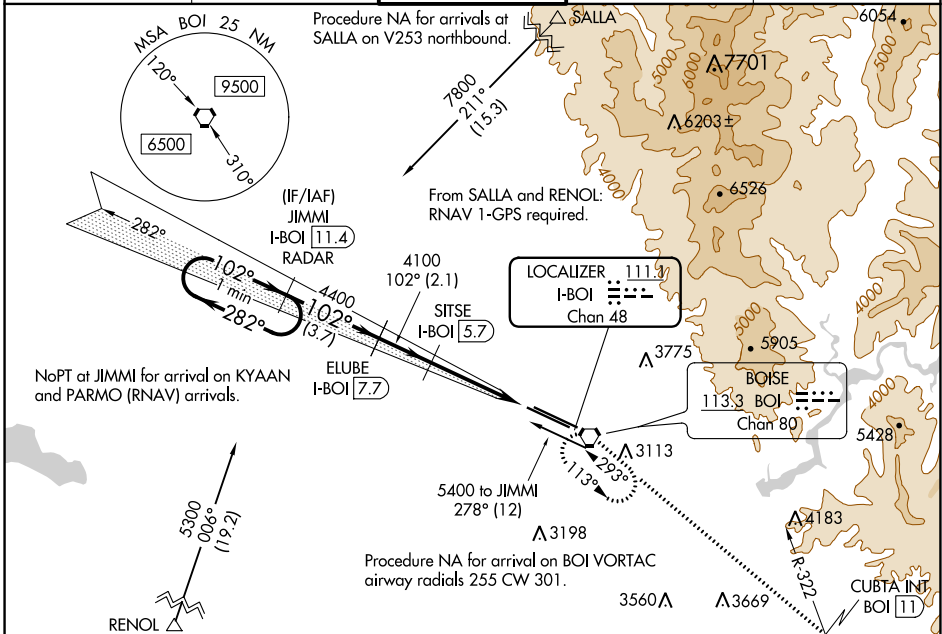
LOC/DME I-BOI <b>111.1</b> Chan <b>48</b>	APP CRS <b>102°</b>	Rwy Idg TDZE Apt Elev <b>9763</b> <b>2836</b> <b>2871</b>
---	------------------------	--

# ILS Y RWY 10R (CAT II & III)

BOISE AIR TERMINAL/GOWEN FIELD (BOI)

<p><b>V</b> DME required.</p> <p><b>A</b> CAT II: RVR 1000 authorized with specific OPSPEC, MSPEC, or LOA approval and use of autoland or HUD to touchdown.</p>	<p>ALSIF-2</p>	<p>MISSED APPROACH: Climb to 6000 on BOI VORTAC R-113 to CUBTA INT/BOI VORTAC 11 DME and right turn direct BOI VORTAC and hold.</p>
---	----------------	---

D-ATIS <b>123.9 290.4</b>	BIG SKY APP CON <b>119.6 269.4</b>	<b>BOISE TOWER</b> <b>118.1 257.8</b>	GND CON <b>121.7 348.6</b>	CLNC DEL <b>125.9 323.2</b>
------------------------------	---------------------------------------	--	-------------------------------	--------------------------------

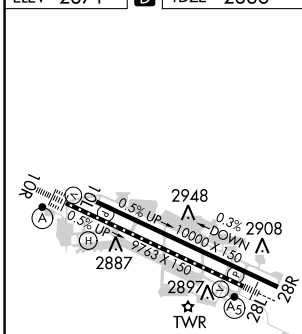


NW-1, 25 FEB 2021 to 25 MAR 2021

NW-1, 25 FEB 2021 to 25 MAR 2021

ELEV 2871	<b>D</b> TDZE 2836
-----------	--------------------

## RADAR or DME REQUIRED



<p>VGSI and descent angles not coincident (VGSI Angle 3.00/TCH 64).</p>			
<p>JIMMI I-BOI <b>11.4</b> RADAR</p>	<p>ELUBE I-BOI <b>7.7</b></p>	<p>SITSE I-BOI <b>5.7</b></p>	<p>BOI R-113</p>
<p>Use I-BOI DME when on the localizer course.</p>			<p>CUBTA INT</p>
<p>BOI</p>			

CATEGORY	A	B	C	D
S-ILS 10R	CAT II RA 102/12 100 DA 2936			
S-ILS 10R	CAT III RVR 03			

## CATEGORY II & III ILS - SPECIAL AIRCREW & AIRCRAFT CERTIFICATION REQUIRED

REIL Rwy 10L  
TDZ/CL Rws 10R and 28L  
HIRL Rws 10L-28R and 10R-28L