

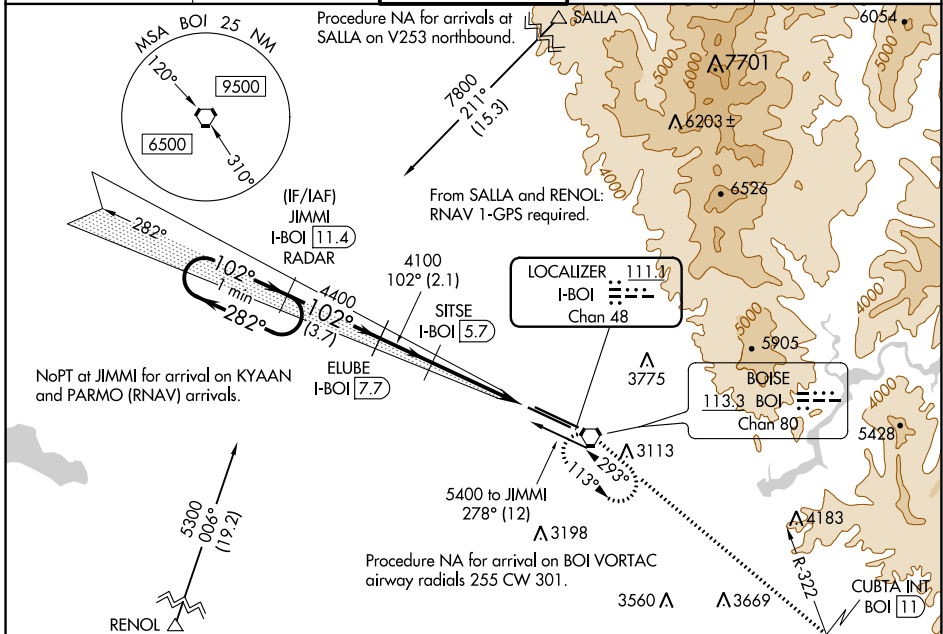
LOC/DME I-BOI	APP CRS	Rwy Idg	<b>9763</b>
<b>111.1</b>	<b>102°</b>	TDZE	<b>2836</b>
Chan <b>48</b>		Apt Elev	<b>2871</b>

# ILS Y RWY 10R (SA CAT I)

BOISE AIR TERMINAL/GOWEN FIELD (BOI)

	DME required. Requires specific OPSPEC, MSPEC, or LOA approval and use of HUD to DH.	ALSF-2 Rwy 10R 	MISSED APPROACH: Climb to 6000 on BOI VORTAC R-113 to CUBTA INT/BOI VORTAC 11 DME and right turn direct BOI VORTAC and hold.

D-ATIS	BIG SKY APP CON	<b>BOISE TOWER</b>	GND CON	CLNC DEL
<b>123.9 290.4</b>	<b>119.6 269.4</b>	<b>118.1 257.8</b>	<b>121.7 348.6</b>	<b>125.9 323.2</b>

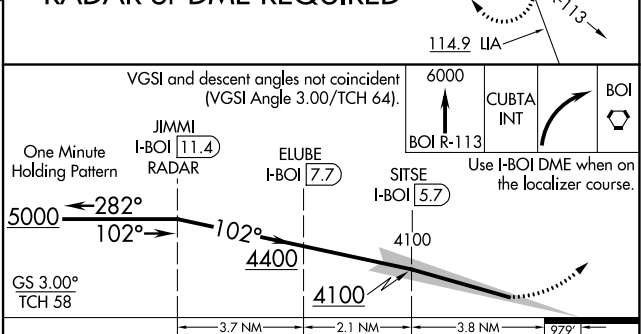
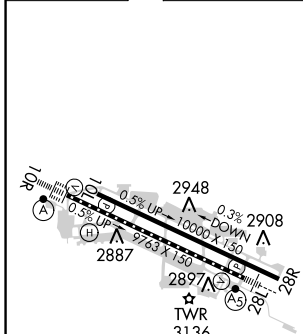


NW-1, 25 FEB 2021 to 25 MAR 2021

NW-1, 25 FEB 2021 to 25 MAR 2021

ELEV 2871	<b>D</b>	TDZE 2836
-----------	----------	-----------

## RADAR or DME REQUIRED



CATEGORY	A	B	C	D
S-ILS 10R	RA 170/14 150 DA 2986			

## SA CATEGORY I ILS - SPECIAL AIRCREW & AIRCRAFT CERTIFICATION REQUIRED

REIL Rwy 10L  
 TDZ/CL Rws 10R and 28L  
 HIRL Rws 10L-28R and 10R-28L

BOISE, IDAHO  
 Amdt 13 29MAR18

BOISE AIR TERMINAL/GOWEN FIELD (BOI)  
 43°34'N-116°13'W  
**ILS Y RWY 10R (SA CAT I)**