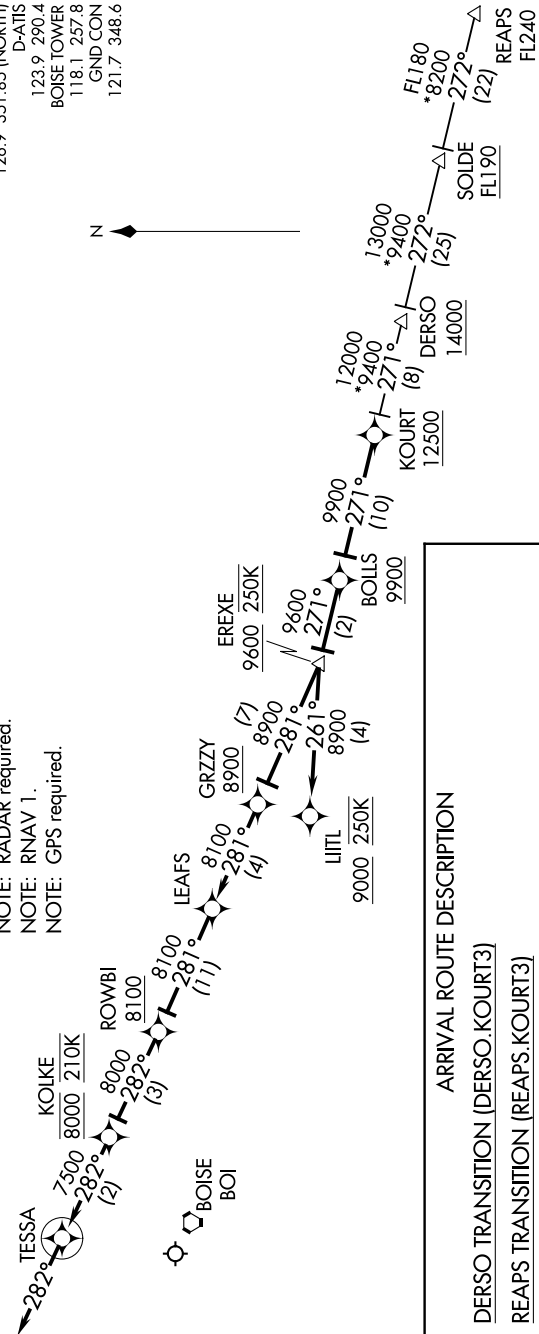


NW-1, 25 FEB 2021 to 25 MAR 2021

BIG SKY APP CON
 119.6 289.4 (SOUTH)
 126.9 351.85 (NORTH)
 D-ATIS
 123.9 290.4
 BOISE TOWER
 118.1 257.8
 GND CON
 121.7 348.6

NOTE: RADAR required.
 NOTE: RNAV 1.
 NOTE: GPS required.



NOTE: Chart not to scale.

ARRIVAL ROUTE DESCRIPTION

DERSO TRANSITION (DERSO.KOURT3)

REAPS TRANSITION (REAPS.KOURT3)

From KOURT on track 271° to cross BOLLS at/above 9900, then on track 271° to cross EREXE at/above 9600 and at 250K.

LANDING RUNWAYS 10L/R: From EREXE on track 281° to cross GRZY at/above 8900, then on track 281° to LEAFS, then on track 281° to cross ROWBI at/above 8100, then on track 282° to cross KOLKE at 8000 and at 210K, then on track 282° to TESSA, then on track 282°. Expect assigned approach or RADAR vectors to final approach course.

LANDING RUNWAYS 28L/R: From EREXE on track 261° to cross LITL at/above 9000 and at 250K. Expect assigned approach or RADAR vectors to final approach course.

NW-1, 25 FEB 2021 to 25 MAR 2021