

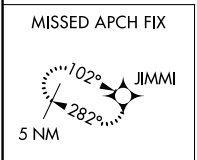
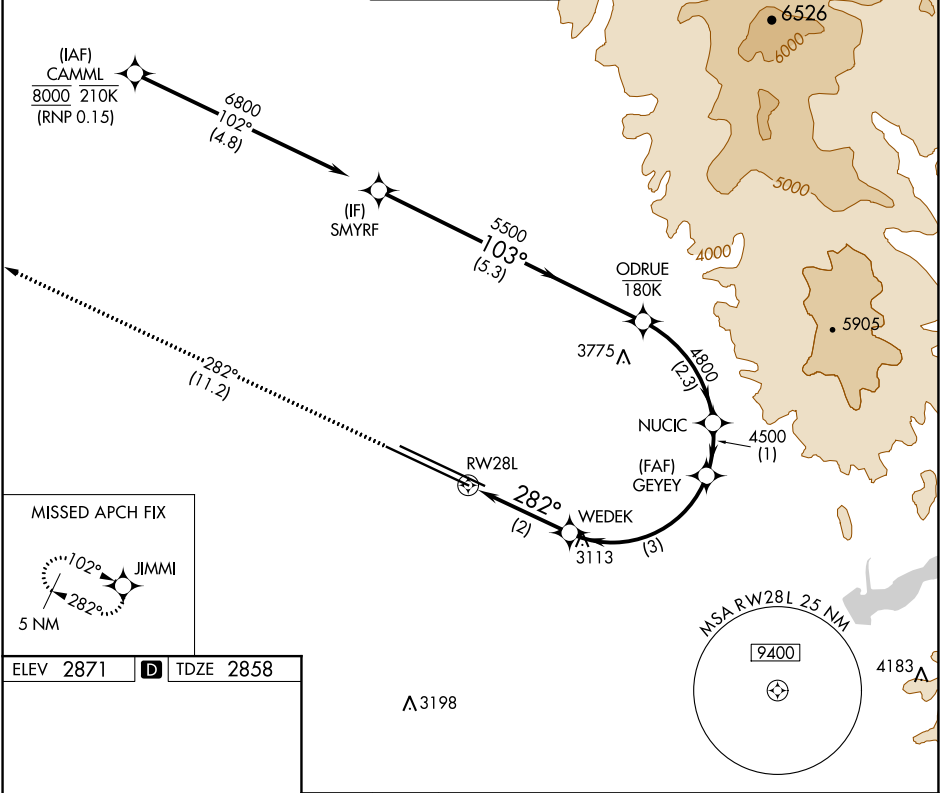
APP CRS	Rwy Idg	9763
282°	TDZE	2858
	Apt Elev	2871

RNAV (RNP) X RWY 28L

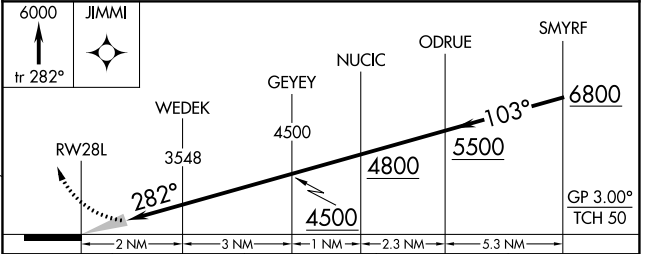
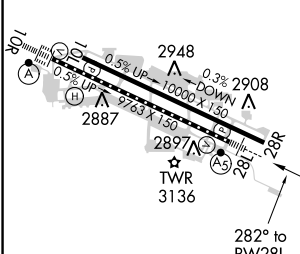
BOISE AIR TERMINAL/GOWEN FIELD (BOI)

V NA	For uncompensated Baro-VNAV systems, procedure NA below -14°C (7°F) or above 53°C (128°F). RF required. GPS required.	MALSR	MISSED APPROACH: Climb to 6000 on track 282° to JIMMI and hold, continue climb-in-hold to 6000.

D-ATIS 123.9 290.4	BIG SKY APP CON 119.6 269.4	BOISE TOWER 118.1 257.8	GND CON 121.7 348.6	CLNC DEL 125.9 323.2
------------------------------	---------------------------------------	-----------------------------------	-------------------------------	--------------------------------



ELEV 2871	D	TDZE 2858
-----------	----------	-----------



CATEGORY	A	B	C	D
RNP 0.15 DA	3276/47 418 (500-1)			

AUTHORIZATION REQUIRED

NW-1, 25 FEB 2021 to 25 MAR 2021

NW-1, 25 FEB 2021 to 25 MAR 2021