

APP CRS	Rwy Idg	9763
102°	TDZE	2836
	Apt Elev	2871

RNAV (RNP) Z RWY 10R

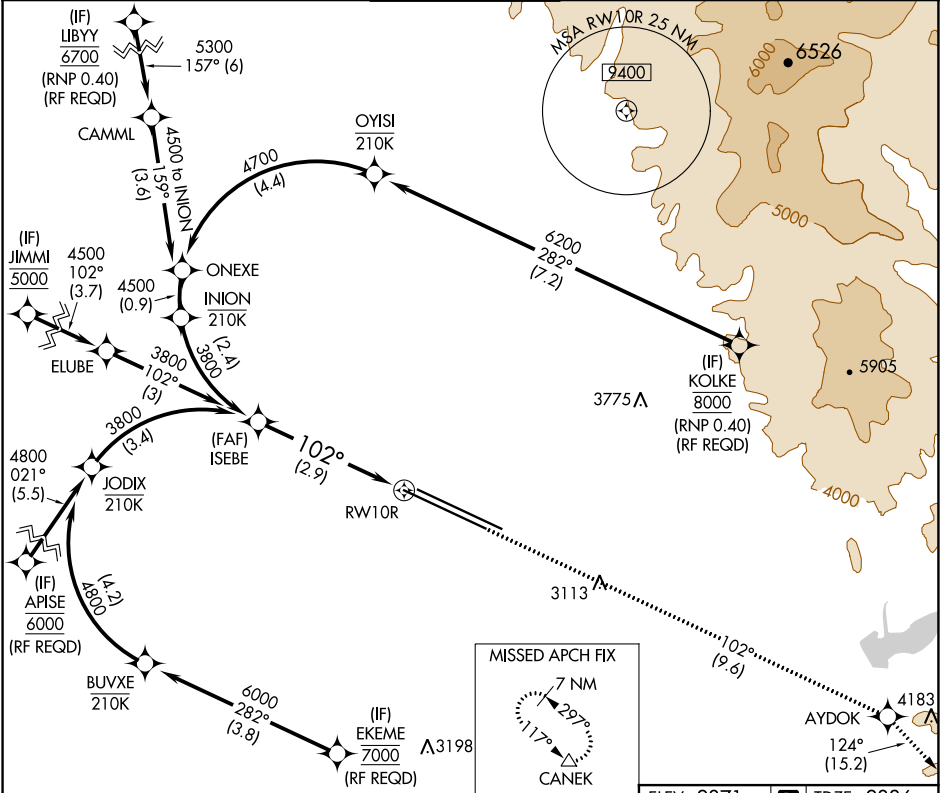
BOISE AIR TERMINAL/GOWEN FIELD (BOI)

For uncompensated Baro-VNAV systems, procedure NA below -14°C (7°F) or above 51°C (124°F). GPS required.

ALSF-2

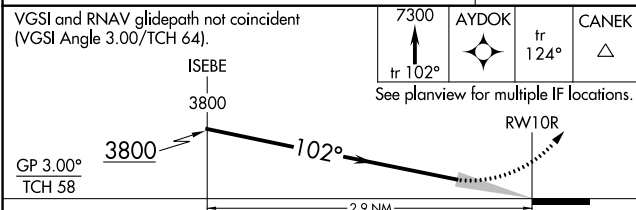
MISSED APPROACH: Climb to 7300 on track 102° to AYDOK and on track 124° to CANEK and hold.

D-ATIS	BIG SKY APP CON	BOISE TOWER	GND CON	CLNC DEL
123.9 290.4	119.6 269.4	118.1 257.8	121.7 348.6	125.9 323.2



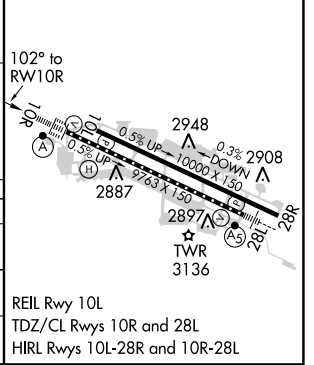
NW-1, 25 FEB 2021 to 25 MAR 2021

NW-1, 25 FEB 2021 to 25 MAR 2021



ELEV 2871	TDZE 2836
-----------	-----------

CATEGORY	A	B	C	D
RNP 0.15 DA		3163/30	327 (300-¾)	
RNP 0.30 DA		3199/40	363 (400-¾)	



AUTHORIZATION REQUIRED