

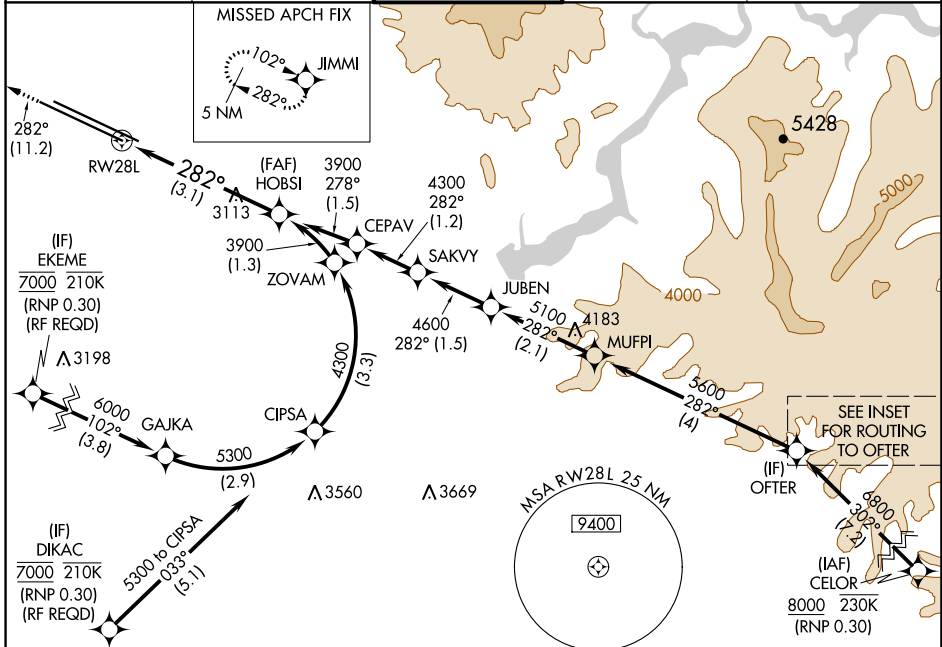
APP CRS	Rwy Idg	9763
282°	TDZE	2858
	Apt Elev	2872

RNAV (RNP) Z RWY 28L

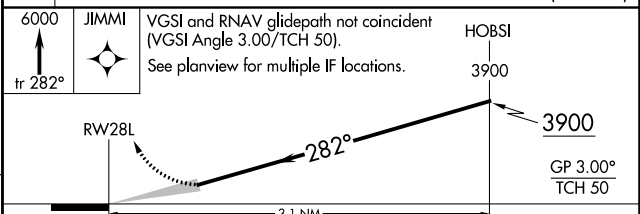
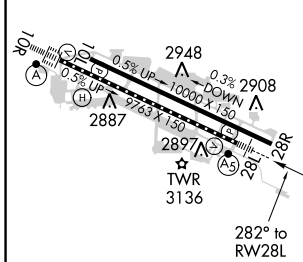
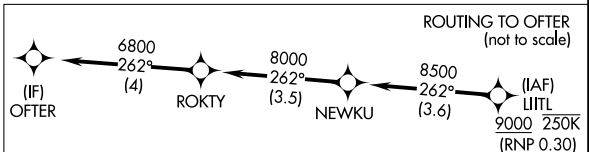
BOISE AIR TERMINAL/GOWEN FIELD (BOI)

RNP AR APCH.	MALSR	MISSED APPROACH: Climb to 6000 on track 282° to JIMMI and hold, continue climb-in-hold to 6000.
<p>▼ For uncompensated Baro-VNAV systems, procedure NA below -1.5°C or above 54°C. For inop ALS, increase RNP 0.15 all Cats visibility to RVR 5500 and increase RNP 0.30 all Cats visibility to 1 3/8 SM.</p>		

D-ATIS 123.9 290.4	BIG SKY APP CON 119.6 269.4	BOISE TOWER 118.1 257.8	GND CON 121.7 348.6	CLNC DEL 125.9 323.2
------------------------------	---------------------------------------	-----------------------------------	-------------------------------	--------------------------------



ELEV 2872	D	TDZE 2858
-----------	----------	-----------



CATEGORY	A	B	C	D
RNP 0.15 DA		3227/35	369 (400-5%)	
RNP 0.30 DA		3319/50	461 (500-1)	

AUTHORIZATION REQUIRED

NW-1, 25 FEB 2021 to 25 MAR 2021

NW-1, 25 FEB 2021 to 25 MAR 2021