


WAAS CH 77702 W28A	APP CRS 282°	Rwy Idg TDZE Apt Elev	9763 2858 2871
--	------------------------	-----------------------------	---

RNAV (GPS) Y RWY 28L

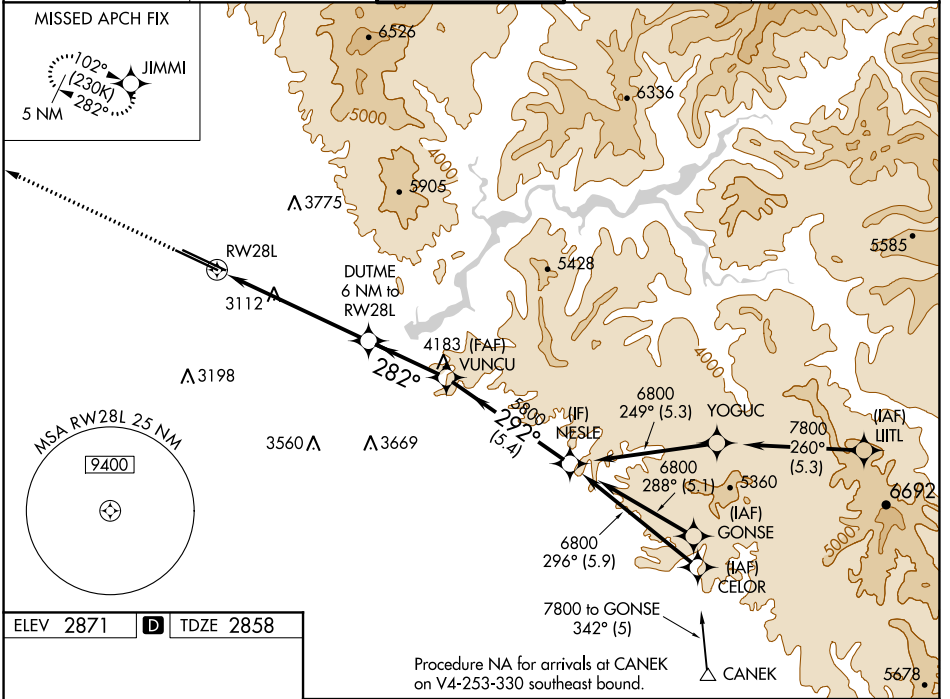
BOISE AIR TERMINAL/GOWEN FIELD (BOI)

⚠ For uncompensated Baro-VNAV systems, LNAV/VNAV NA below -12°C (11°F) or above 52°C (126°F). Circling NA north of Rwy 10L-28R. DME/DME RNP-0.3 NA. For inop ALS, increase LPV all Cats visibility to RVR 5000, LNAV/VNAV Cat E visibility to 1 3/8 SM, and LNAV Cat C/D/E visibility to 1 3/4 SM.

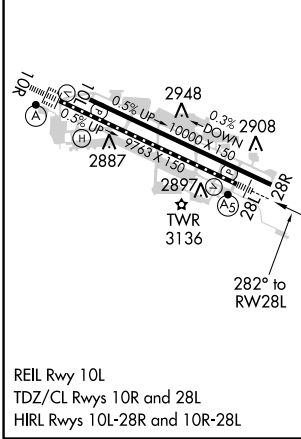
MALSR 

MISSED APPROACH: Climb to 6000 direct JIMMI and hold, continue climb-in-hold to 6000.

D-ATIS 123.9 290.4	BIG SKY APP CON 119.6 269.4	BOISE TOWER 118.1 257.8	GND CON 121.7 348.6	CLNC DEL 125.9 323.2
------------------------------	---------------------------------------	--	-------------------------------	--------------------------------



ELEV 2871 **D** TDZE 2858



REIL Rwy 10L
TDZ/CL Rwys 10R and 28L
HIRL Rwys 10L-28R and 10R-28L

	6000	JIMMI		NESLE	
			DUTME 6 NM to RWY 28L	VUNCU 5800	
				NESLE 6800	
				GP 3.00° TCH 50	
CATEGORY	A	B	C	D	E
LPV DA		3183/30	325 (400-3/8)		
LNAV/VNAV DA		3274/45	416 (500-7/8)		
LNAV MDA	3480/24	622 (700-1/2)	3480-1 3/8	622 (700-1 3/8)	
C CIRCLING	3480-1	609 (700-1)	3740-2 1/2 869 (900-2 1/2)	3820-3 949 (1000-3)	3880-3 1009 (1100-3)

NW-1, 25 FEB 2021 to 25 MAR 2021

NW-1, 25 FEB 2021 to 25 MAR 2021