

VORTAC BOI 113.3 Chan 80	APP CRS 101°	Rwy Idg TDZE 2844 Apt Elev 2871	10000 2844 2871
--	------------------------	---	--

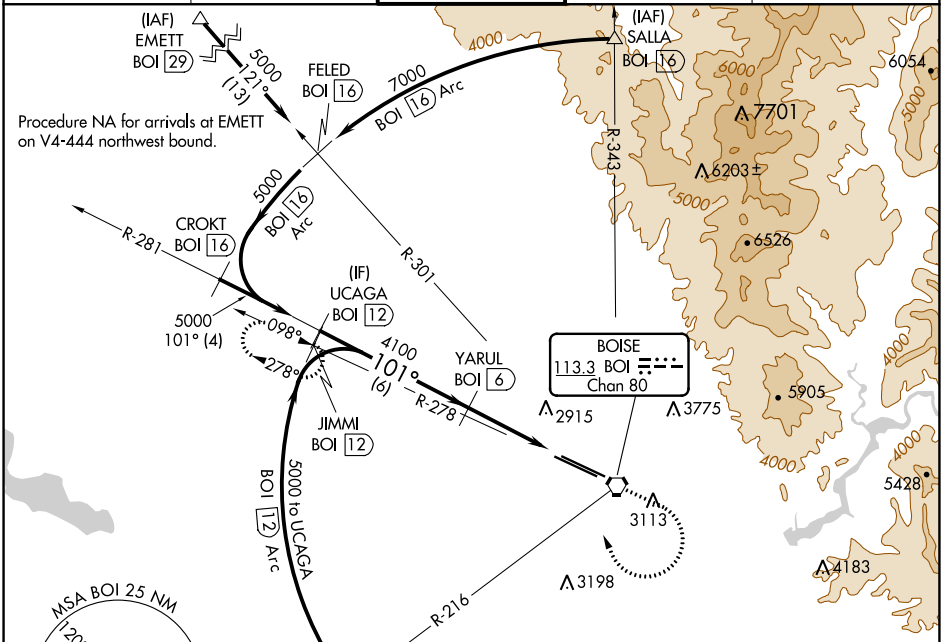
VOR/DME or TACAN RWY 10L

BOISE AIR TERMINAL/GOWEN FIELD (BOI)

⚠ Circling NA north of Rwy 10L-28R.
Helicopter visibility reduction below 3/4 SM NA.

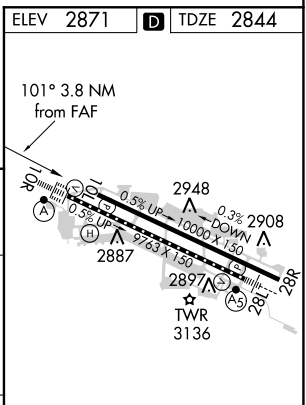
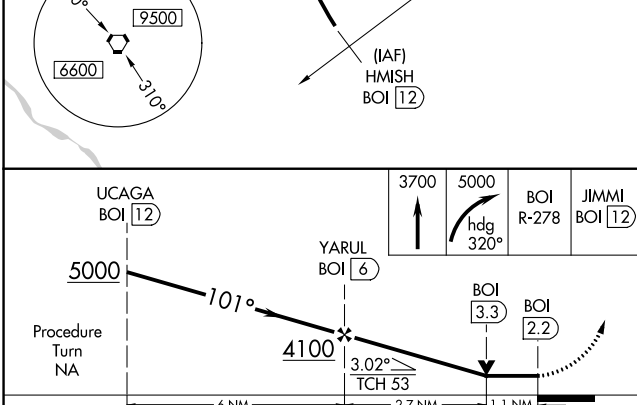
MISSED APPROACH: Climb to 3700 then climbing right turn to 5000 on heading 320° and BOI VORTAC R-278 to JIMMI/BOI 12 DME and hold.

D-ATIS 123.9 290.4	BIG SKY APP CON 119.6 269.4	BOISE TOWER 118.1 257.8	GND CON 121.7 348.6	CLNC DEL 125.9 323.2
------------------------------	---------------------------------------	--	-------------------------------	--------------------------------



NW-1, 25 FEB 2021 to 25 MAR 2021

NW-1, 25 FEB 2021 to 25 MAR 2021



CATEGORY	A	B	C	D	E
S-10L	3240-1	396 (400-1)	3240-1 1/8		396 (400-1 1/8)
CIRCLING	3440-1	569 (600-1)	3440-1 1/2	3440-2	3860-3
			569 (600-1 1/2)	569 (600-2)	989 (1000-3)

REIL Rwy 10L
TDZ/CL Rwys 10R and 28L
HIRL Rwys 10L-28R and 10R-28L