

VORTAC BOI <b>113.3</b> Chan 80	APP CRS <b>278°</b>	Rwy Idg	28L	28R
		TDZE	<b>9763</b>	<b>10000</b>
			<b>2853</b>	<b>2871</b>
		Apt Elev	<b>2871</b>	<b>2871</b>

# VOR/DME or TACAN RWY 28L

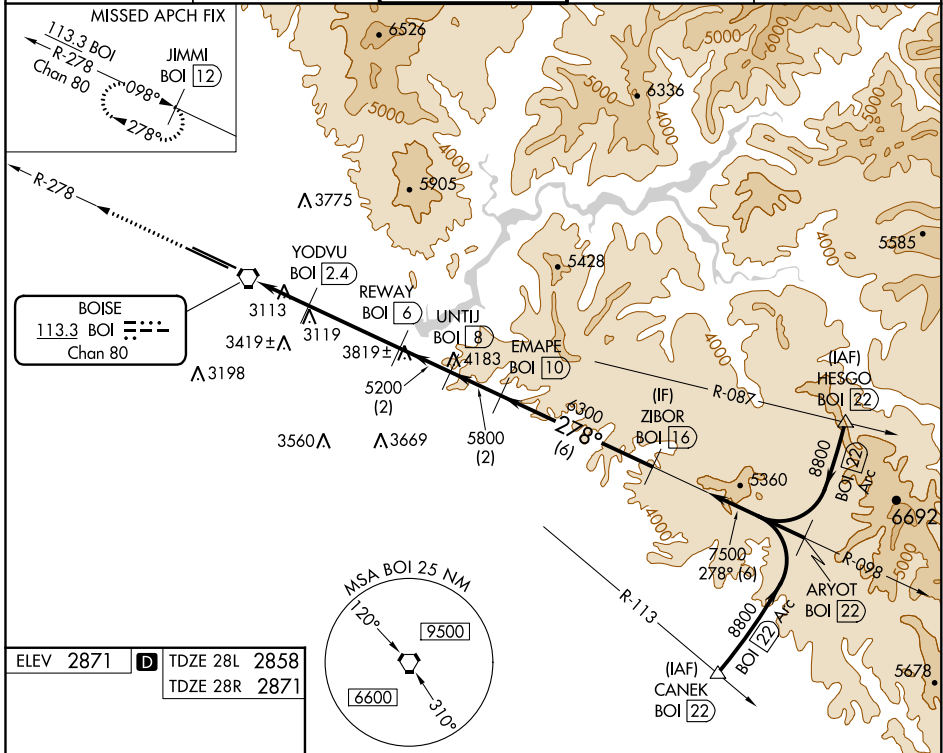
BOISE AIR TERMINAL/GOWEN FIELD (BOI)

**⚠** Circling NA north of Rwy 10L-28R. For inoperative MALSR increase S-28L Cat E visibility ½ mile.

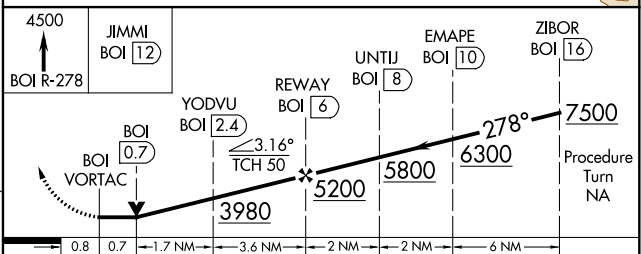
MALSR Rwy 28L

MISSED APPROACH: Climb to 4500 via BOI VORTAC R-278 to JIMMI/12 DME and hold.

D-ATIS <b>123.9 290.4</b>	BIG SKY APP CON <b>119.6 269.4</b>	BOISE TOWER <b>118.1 257.8</b>	GND CON <b>121.7 348.6</b>	CLNC DEL <b>125.9 323.2</b>
------------------------------	---------------------------------------	-----------------------------------	-------------------------------	--------------------------------



ELEV 2871 **D** TDZE 28L 2858  
TDZE 28R 2871



CATEGORY	A	B	C	D	E
S-28L	3380/24	522 (600-½)	3380/50 522 (600-1)	3380/60	522 (600-1¼)
SIDESTEP RWY 28R	3380/60	509 (600-1¼)	3380-1¾ 509 (600-1¾)	3380-2¼	509 (600-2¼)
CIRCLING	3440-1	569 (600-1)	3440-1½ 569 (600-1½)	3440-2	3820-3 949 (1000-3)

REIL Rwy 10L  
TDZ/CL Rwy 10R and 28L  
HIRL Rwy 10L-28R and 10R-28L

NW-1, 25 FEB 2021 to 25 MAR 2021

NW-1, 25 FEB 2021 to 25 MAR 2021