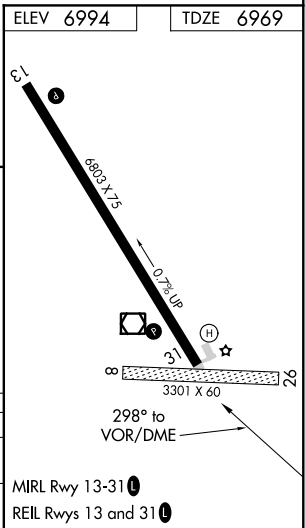
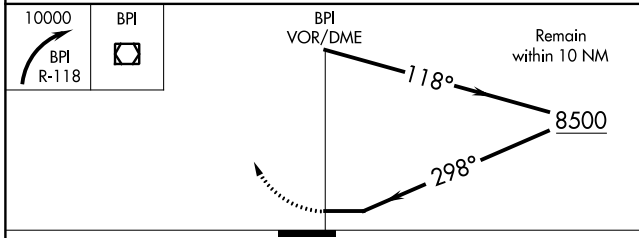
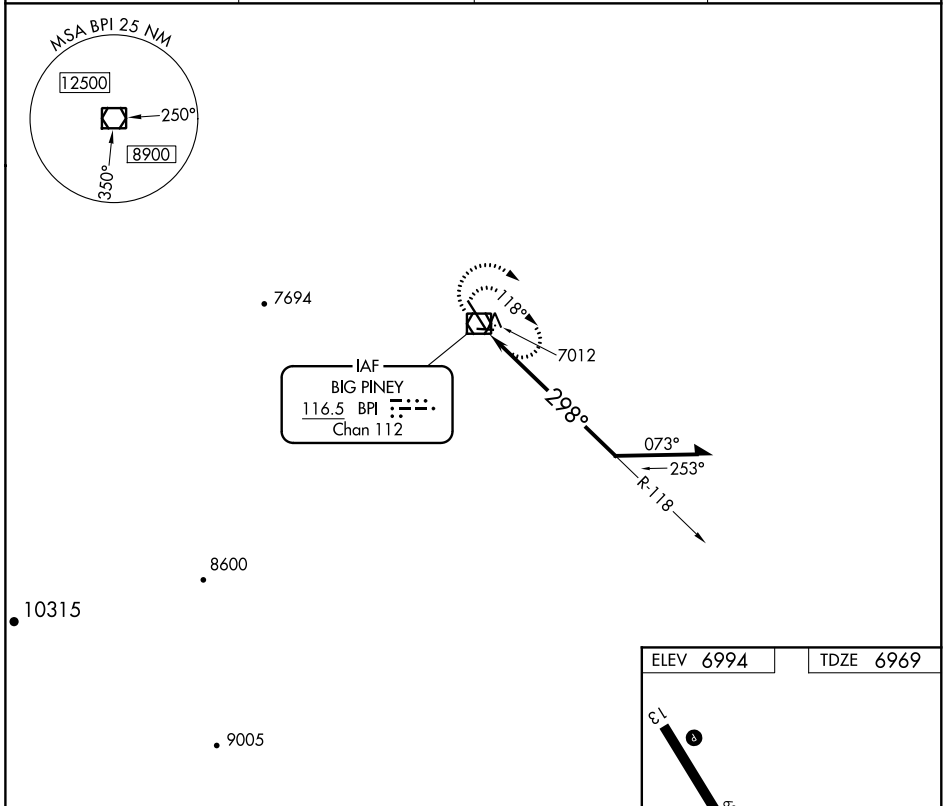
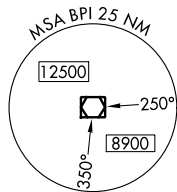


VOR/DME BPI 116.5 Chan 112	APP CRS 298°	Rwy Idg TDZE Apt Elev	6803 6969 6994
--	------------------------	-----------------------------	---

VOR RWY 31
MILEY MEMORIAL FIELD (BPI)

		Circling NA to Rwy's 8 and 26.		MISSED APPROACH: Climbing right turn to 10000 on BPI R-118, then return to BPI VOR/DME and hold.	
ASOS 135.225	SALT LAKE CENTER 128.35 239.25	UNICOM 122.8 (CTAF)	122.70		



CATEGORY	A	B	C	D
S-31	7680-1 711 (700-1)		7680-2 711 (700-2)	7680-2 711 (700-2 1/4)
CIRCLING	7680-1 686 (700-1)		7680-2 686 (700-2)	7680-2 686 (700-2 1/4)

NW-1, 25 FEB 2021 to 25 MAR 2021

NW-1, 25 FEB 2021 to 25 MAR 2021