

VOR/DME BPT 114.5 Chan 92	APP CRS 120°	Rwy Idg 6750 TDZE 15 Apt Elev 16
---	------------------------	---

VOR RWY 12

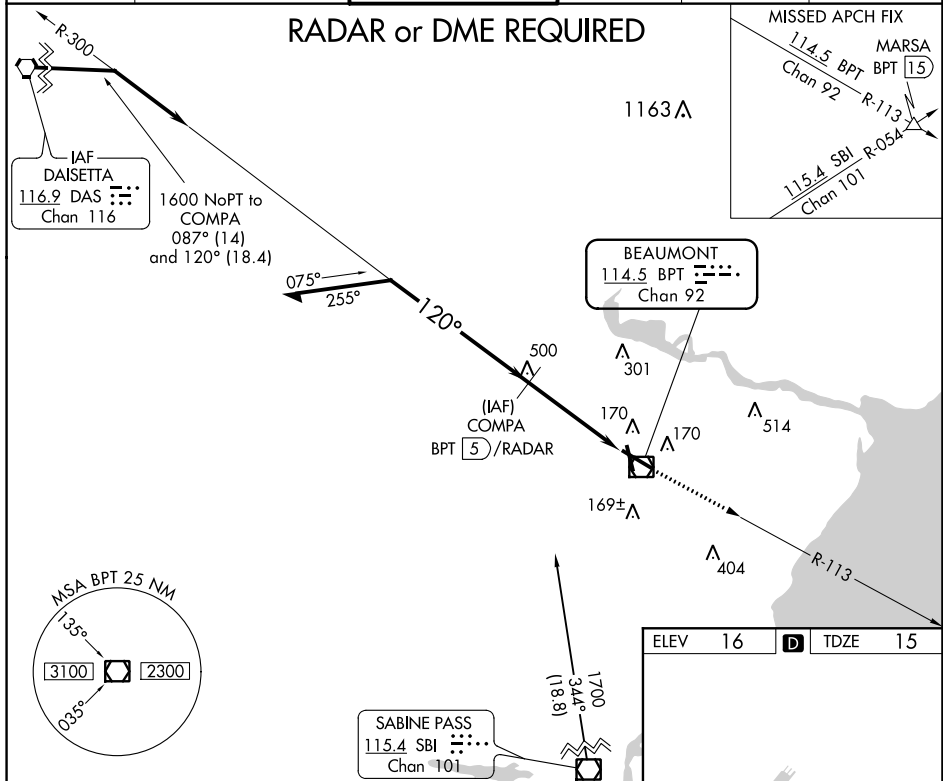
JACK BROOKS RGNL (BPT)

⚠ For inoperative MALS, increase S-12 Cat C/D/E visibility to RVR 6000. When local altimeter setting not received, use Orange County altimeter setting and increase all MDA 40 feet and S-12 Cat C/D/E visibility to RVR 4500 and Circling Cat E ½ mile. For inop MALS when using Orange County altimeter setting, increase S-12 Cat E visibility to 1 3/8 mile.

MALS MISSED APPROACH: Climb to 1700 via BPT R-113 to MARS A Int/BPT 15 DME.

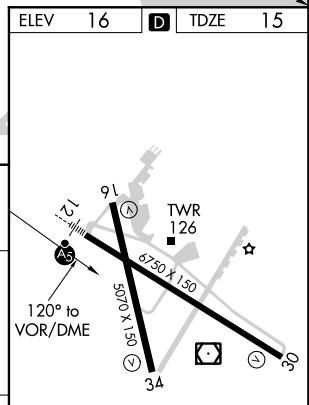
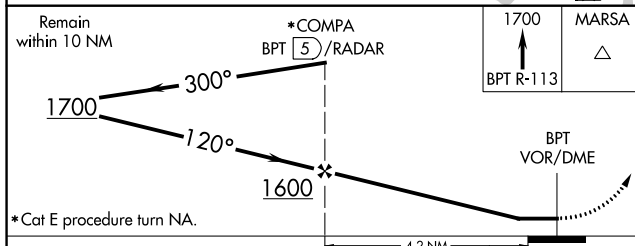
ATIS 126.3	HOUSTON APP CON 121.3 377.1	BEAUMONT TOWER* 119.5 (CTAF) 0	GND CON 124.85	CLNC DEL 118.3	UNICOM 122.95
----------------------	---------------------------------------	--	--------------------------	--------------------------	-------------------------

RADAR or DME REQUIRED



SC-5, 25 FEB 2021 to 25 MAR 2021

SC-5, 25 FEB 2021 to 25 MAR 2021



CATEGORY	A	B	C	D	E
	S-12	420/24 405 (500-½)	420/40 405 (500-¾)		
CIRCLING	480-1 464 (500-1)	480-1½ 464 (500-1½)	580-2 564 (600-2)	820-2¾ 804 (900-2¾)	

REIL Rwy 16, 30 and 34 HIRL Rwy 12-30, 16-34