

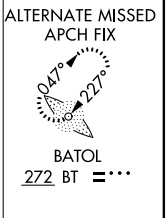
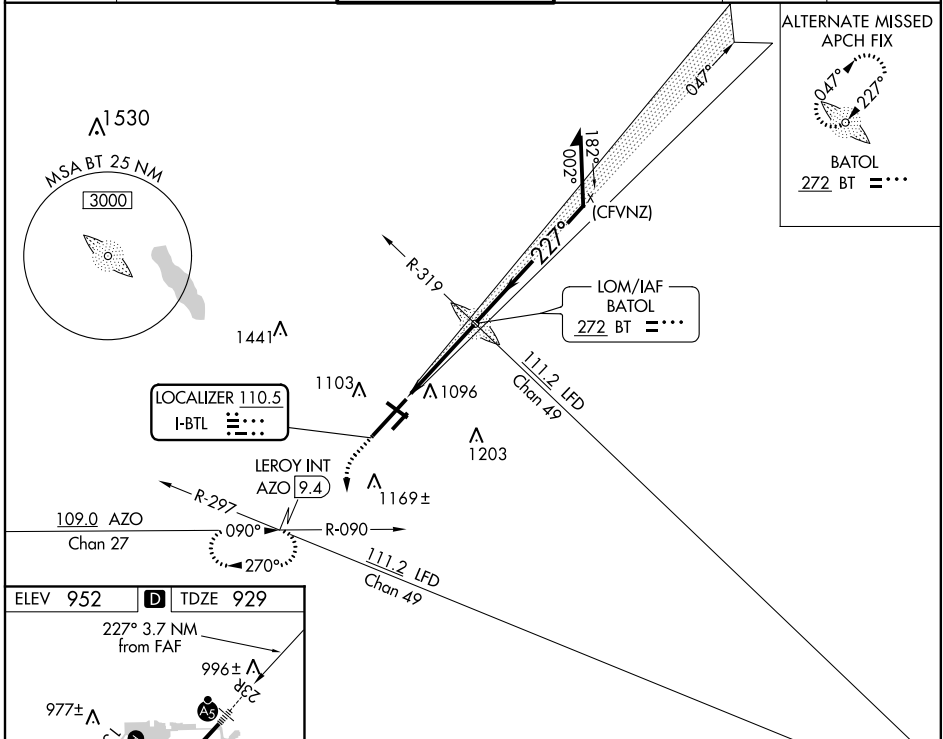
| | | |
|---------------------------|------------------------|--|
| LOC I-BTL 110.5 | APP CRS 227° | Rwy Idg 10004 TDZE 929 Apt Elev 952 |
|---------------------------|------------------------|--|

ILS or LOC RWY 23R

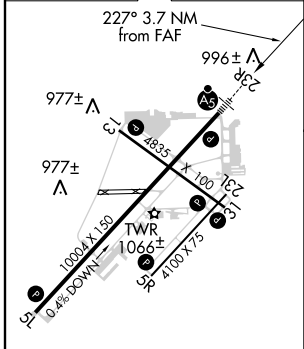
BATTLE CREEK EXECUTIVE AT KELLOGG FIELD (BTL)

| | | | |
|---|--|-----------|---|
| DME required, RADAR required for procedure entry. | | MALSR | MISSED APPROACH: Climb to 1500 then climbing left turn to 3000 on heading 215° and AZO VOR/DME R-090 to LEROY/AZO 9.4 DME and hold, continue climb-in-hold to 3000. |
| Circling Rwy 5R, 23L NA. Circling Rwy 31 NA at night. When local altimeter setting not received, use Grand Rapids altimeter setting: increase DA to 1236 feet and increase all MDA 120 feet. Increase S-LOC 23R Cats C/D visibility to 1¼ SM, Circling Cat C visibility to 2 SM and Cat D visibility to 2¼ SM. For inop ALS, increase S-LOC 23R Cat C/D visibility to 1¾ SM. For inop ALS when using Grand Rapids altimeter setting, increase S-ILS 23R all Cats visibility to RVR 5000. #RVR 1800 authorized with use of FD or AP or HUD to DA (NA when using Grand Rapids altimeter setting). | | | |

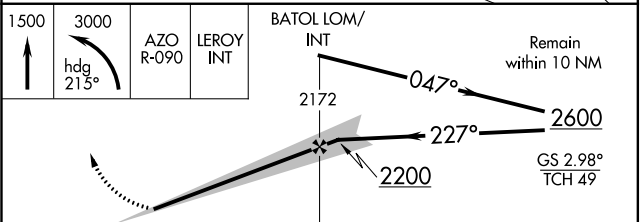
| | | | | | |
|------------------------|--|--|-------------------------|-------------------------|------------------------|
| ATIS 128.325 | GREAT LAKES APP CON ★ 119.2 239.25 | BATTLE CREEK TOWER ★ 126.825 | GND CON 121.7 | UNICOM 122.95 | CTAF 126.825 |
|------------------------|--|--|-------------------------|-------------------------|------------------------|



| | | |
|----------|----------|----------|
| ELEV 952 | D | TDZE 929 |
|----------|----------|----------|



| | | | | | |
|---------------------------------|------|------|------|------|------|
| HIRL Rwy 5L-23R | | | | | |
| MIRL Rwy 13-31 and 5R-23L | | | | | |
| REL Rwy 5L, 5R, 13, 23L and 31L | | | | | |
| FAF to MAP 3.7 NM | | | | | |
| Knots | 60 | 90 | 120 | 150 | 180 |
| Min:Sec | 3:42 | 2:28 | 1:51 | 1:29 | 1:14 |



| | | | | |
|-------------------|-----------------------|-----------------------|------------------------|-----------------------|
| CATEGORY | A | B | C | D |
| S-ILS 23R | #1129/24 200 (200-½) | | | |
| S-LOC 23R | 1400/24 | 471 (500-½) | 1400/50 | 471 (500-1) |
| C CIRCLING | 1420-1 468 (500-1) | 1480-1 528 (600-1) | 1520-1½ 568 (600-½) | 1520-2 568 (600-2) |

ILS or LOC RWY 23R

EC-1, 25 FEB 2021 to 25 MAR 2021

EC-1, 25 FEB 2021 to 25 MAR 2021