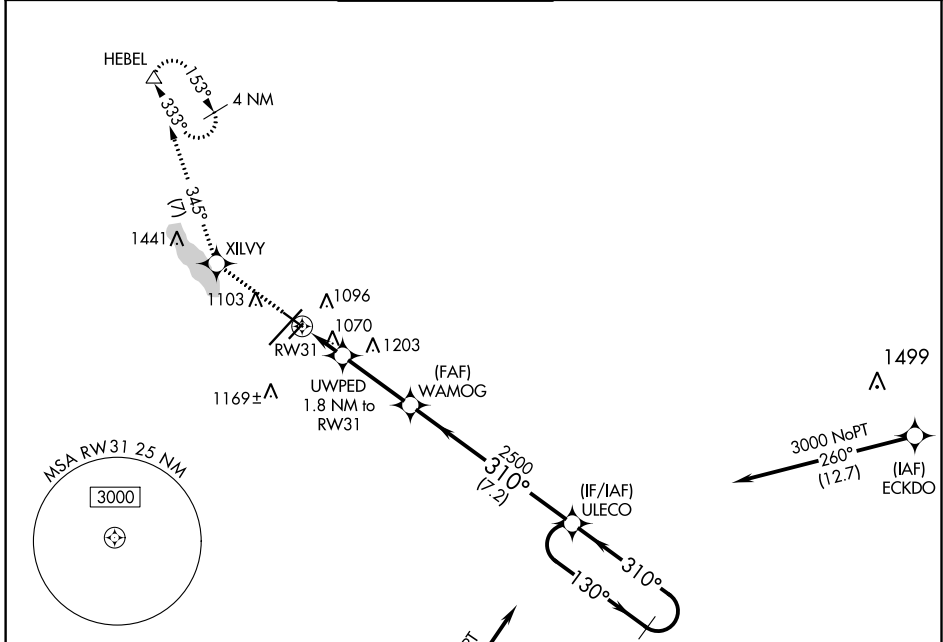


APP CRS	Rwy Idg	<b>4835</b>
<b>310°</b>	TDZE	<b>930</b>
	Apt Elev	<b>952</b>

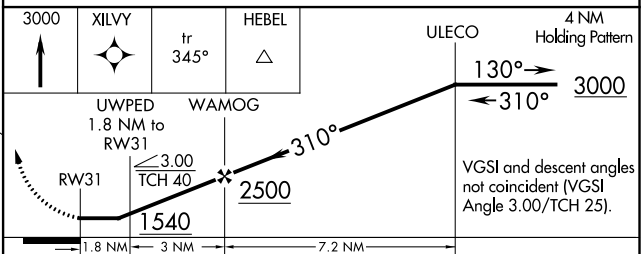
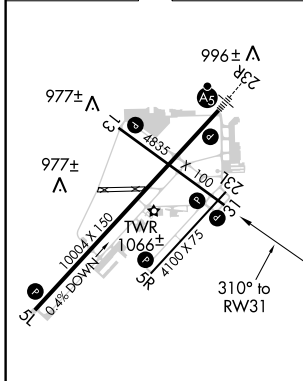
# RNAV (GPS) RWY 31

BATTLE CREEK EXECUTIVE AT KELLOGG FIELD (BTL)

RNP APCH.			MISSED APPROACH: Climb to 3000 direct XILVY and on 345° track to HEBEL and hold.		
<p>▼ Circling NA to Rwys 5R and 23L. Rwy 31 helicopter visibility reduction below 1 SM NA. Procedure NA at night.</p>					
ATIS	GREAT LAKES APP CON ★	BATTLE CREEK TOWER ★	GND CON	UNICOM	CTAF
<b>128.325</b>	<b>119.2 239.25</b>	<b>126.825</b>	<b>121.7</b>	<b>122.95</b>	<b>126.825 0</b>



ELEV 952	<b>D</b>	TDZE 930
----------	----------	----------



CATEGORY	A	B	C	D
LNAV MDA	1320-1	390 (400-1)	1320-1½	390 (400-1½)
<b>C</b> CIRCLING	1420-1 468 (500-1)	1480-1 528 (600-1)	1520-1½ 568 (600-1½)	1520-2 568 (600-2)

HIRL Rwy 5L-23R  
MIRL Rwys 13-31 and 5R-23L  
REIL Rwys 5L, 5R, 13, 23L and 31L

# RNAV (GPS) RWY 31

EC-1, 25 FEB 2021 to 25 MAR 2021

EC-1, 25 FEB 2021 to 25 MAR 2021