

WAAS CH <b>61220</b> <b>W05A</b>	APP CRS <b>047°</b>	Rwy Idg <b>10004</b> TDZE <b>952</b> Apt Elev <b>952</b>
--	------------------------	--

# RNAV (GPS) RWY 5L

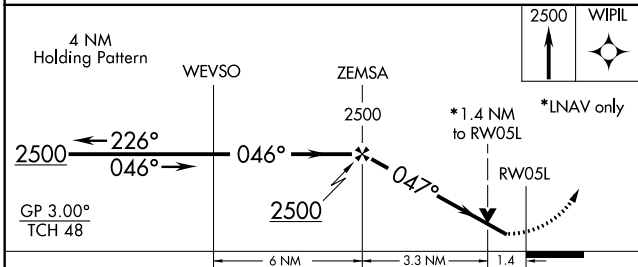
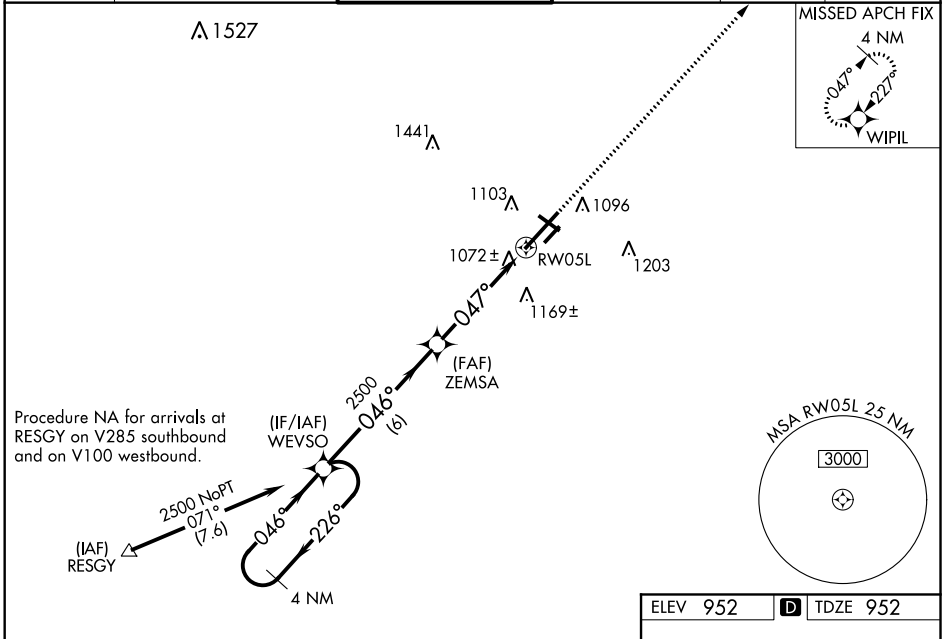
BATTLE CREEK EXECUTIVE AT KELLOGG FIELD (BTL)

RNP APCH:

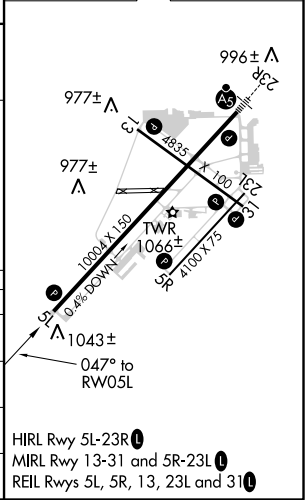
▼ For uncompensated Baro-VNAV systems, LNAV/VNAV NA below -16°C or above 37°C.  
 ▲ Rwy 5L helicopter visibility reduction below 3/4 SM NA. When local altimeter setting not received, use Grand Rapids altimeter setting: increase all DAs 106 feet and all visibilities 3/8 SM; increase all MDAs 120 feet and increase LNAV Cats C and D visibility 3/8 SM and Circling Cat C visibility 1/2 SM and Cat D visibility 1/4 SM. VDP and Baro-VNAV NA when using Grand Rapids altimeter setting. Circling Rwy 31 NA at night. Circling NA to Rwys 5R and 23L.

MISSED APPROACH:  
Climb to 2500 direct  
WIPIL and hold.

ATIS <b>128.325</b>	GREAT LAKES APP CON * <b>119.2 239.25</b>	BATTLE CREEK TOWER * <b>126.825</b>	GND CON <b>121.7</b>	UNICOM <b>122.95</b>	CTAF <b>126.825</b> <b>0</b>
------------------------	--	--	-------------------------	-------------------------	---------------------------------



ELEV 952	<b>D</b> TDZE 952
----------	-------------------



CATEGORY	A	B	C	D
LPV DA		1317-1 1/4	365 (400-1 1/4)	
LNAV/VNAV DA		1253-1	301 (400-1)	
LNAV MDA	1440-1	488 (500-1)	1440-1 3/8	488 (500-1 3/8)
<b>C</b> CIRCLING	1440-1 488 (500-1)	1480-1 528 (600-1)	1520-1 1/2 568 (600-1 1/2)	1520-2 568 (600-2)

# RNAV (GPS) RWY 5L

EC-1, 25 FEB 2021 to 25 MAR 2021

EC-1, 25 FEB 2021 to 25 MAR 2021