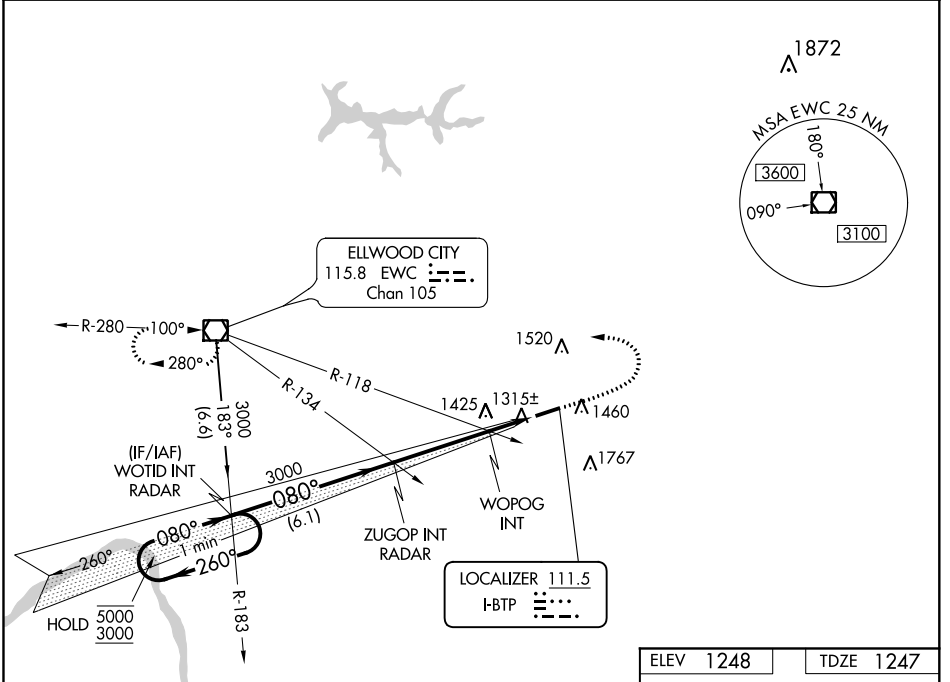


LOC I-BTP 111.5	APP CRS 080°	Rwy Idg 4801
		TDZE 1247
		Apt Elev 1248

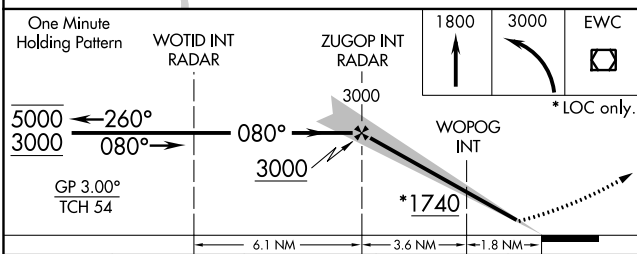
ILS or LOC RWY 8
PITTSBURGH/BUTLER RGNL (BTP)

<p>▽ Rwy 8 helicopter visibility reduction below 3/4 SM NA. ▲ Circling Rwy 26 NA at night. S-ILS 8 inop table does not apply.</p>	<p>MALSF </p>	<p>MISSED APPROACH: Climb to 1800 then climbing left turn to 3000 direct EWC VOR/DME and hold.</p>	
<p>AWOS-3PT 121.450</p>	<p>PITTSBURGH APP CON 124.75 338.2</p>	<p>CLNC DEL 119.4</p>	<p>UNICOM 123.05 (CTAF) 0</p>



NE-4, 25 FEB 2021 to 25 MAR 2021

NE-4, 25 FEB 2021 to 25 MAR 2021



ELEV 1248	TDZE 1247												
<p>One Minute Holding Pattern</p> <p>WOTID INT RADAR</p> <p>ZUGOP INT RADAR</p> <p>WOPOG INT</p> <p>GP 3.00° TCH 54</p> <p>6.1 NM</p> <p>3.6 NM</p> <p>1.8 NM</p>													
<p>1800</p> <p>3000</p> <p>EWC</p> <p>*LOC only.</p>													
<p>080° 5.4 NM from FAF</p> <p>REIL Rwy 26</p> <p>HIRL Rwy 8-26 0</p> <p>FAF to MAP 5.4 NM</p>													
<table border="1"> <tr> <td>Knots</td> <td>60</td> <td>90</td> <td>120</td> <td>150</td> <td>180</td> </tr> <tr> <td>Min:Sec</td> <td>5:24</td> <td>3:36</td> <td>2:42</td> <td>2:10</td> <td>1:48</td> </tr> </table>		Knots	60	90	120	150	180	Min:Sec	5:24	3:36	2:42	2:10	1:48
Knots	60	90	120	150	180								
Min:Sec	5:24	3:36	2:42	2:10	1:48								

CATEGORY	A	B	C	D
S-ILS 8		1497-3/4	250 (300-3/4)	
S-LOC 8	1740-3/4	493 (500-3/4)	1740-1 1/8	493 (500-1 1/8)
C CIRCLING	1820-1	572 (600-1)	2080-2 1/2	2080-2 3/4
			832 (900-2 1/2)	832 (900-2 3/4)
WOPOG FIX MINIMUMS (DUAL VOR RECEIVERS REQUIRED)				
S-LOC 8	1580-3/4		333 (400-3/4)	
C CIRCLING	1820-1	572 (600-1)	2080-2 1/2	2080-2 3/4
			832 (900-2 1/2)	832 (900-2 3/4)