

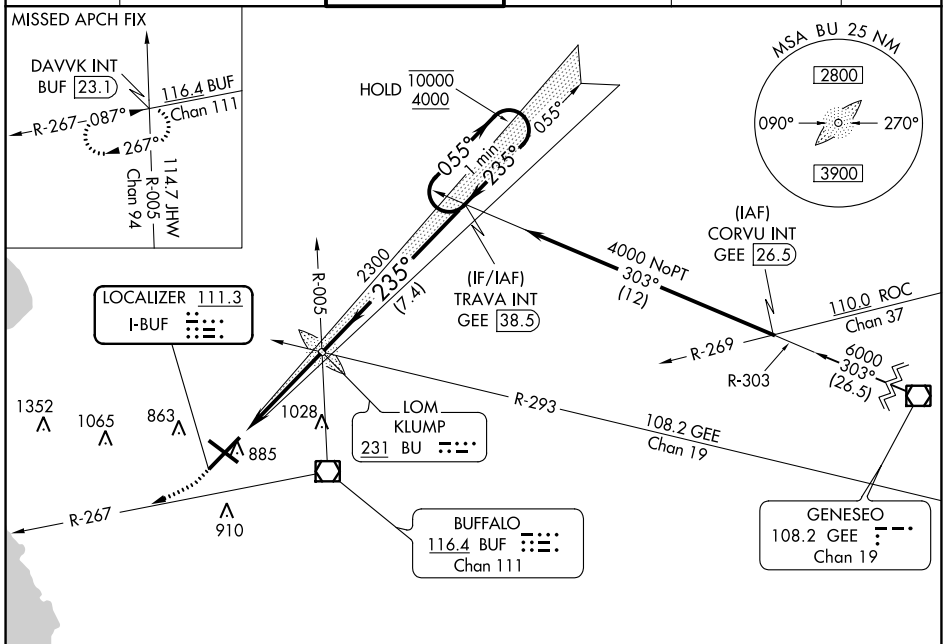
LOC I-BUF 111.3	APP CRS 235°	Rwy Idg TDZE Apt Elev	7569 726 727
---------------------------	------------------------	-----------------------------	---

ILS or LOC RWY 23

BUFFALO NIAGARA INTL (BUF)

		MISSED APPROACH: Climb to 2300 then climbing right turn to 3000 on heading 300° and BUF VOR/DME R-267 to DAVVK INT/BUF 23.1 DME and hold.			
--	--	---	--	--	--

D-ATIS 135.35	BUFFALO APP CON 126.15 263.125	BUFFALO TOWER 120.5 257.8	GND CON 133.2 257.8	CLNC DEL 124.7 257.8	CPDLC
-------------------------	--	-------------------------------------	-------------------------------	--------------------------------	-------



NE-2, 25 FEB 2021 to 25 MAR 2021

NE-2, 25 FEB 2021 to 25 MAR 2021



2300	3000	BUF R-267	DAVVK INT	One Minute Holding Pattern
		TRAVA INT GEE 38.5	BU LOM 2205	GS 3.00° TCH 51
4.4 NM 7.4 NM				

ELEV 727	TDZE 726
235° 4.4 NM from FAF	
REIL Rwy 14 TDZ/CL Rws 5 and 23 HIRL Rws 5-23 and 14-32	
FAF to MAP 4.4 NM	
Knots	60 90 120 150 180
Min:Sec	4:24 2:56 2:12 1:46 1:28

CATEGORY	A	B	C	D
S-ILS 23		926/18	200 (200-½)	
S-LOC 23	1140/24	414 (500-½)	1140/40	414 (500-¾)
C CIRCLING	1200-1	473 (500-1)	1220-1½	1340-2
			493 (500-½)	613 (700-2)