

LOC I-GBI <b>108.5</b>	APP CRS <b>055°</b>	Rwy Idg TDZE Apt Elev	<b>7569</b> <b>708</b> <b>727</b>
---------------------------	------------------------	-----------------------------	---

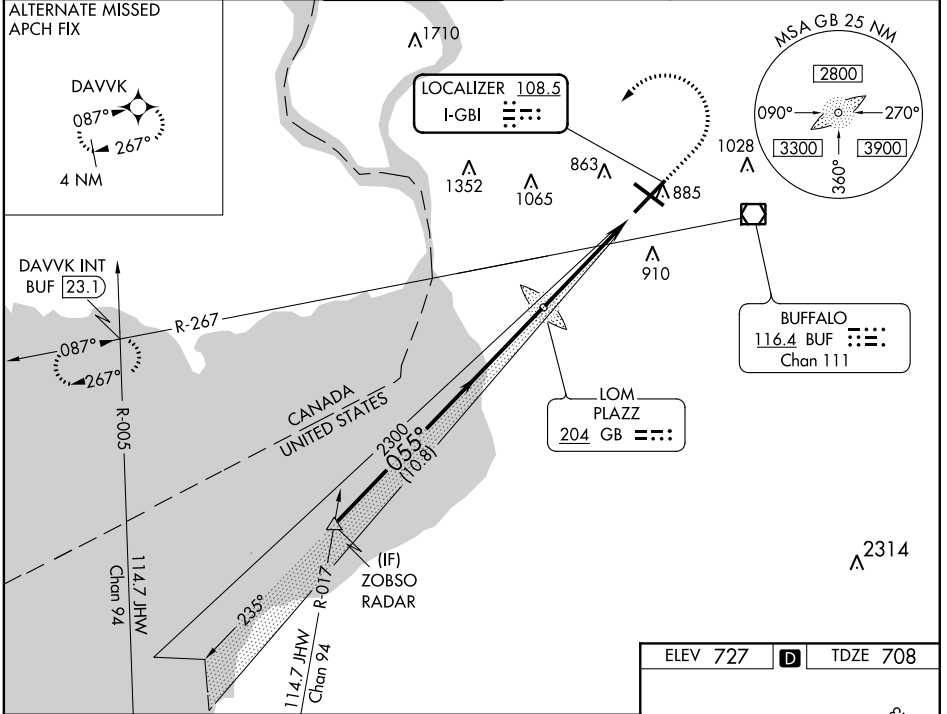
# ILS or LOC RWY 5

BUFFALO NIAGARA INTL (BUF)

RADAR required for procedure entry. ADF required for LOC only. MALSR MISSED APPROACH: Climb to 1200 then climbing left turn to 3000 on heading 245° and BUF VOR/DME R-267 to DAVVK INT/BUF 23.1 DME and hold.

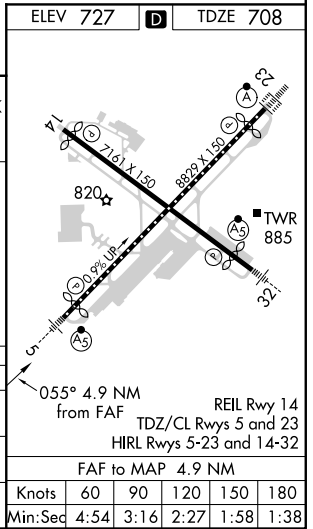
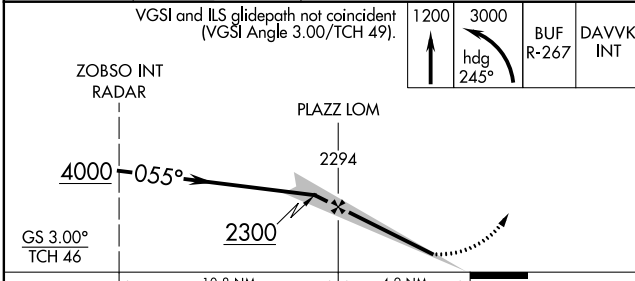
Autopilot coupled approach NA.

D-ATIS <b>135.35</b>	BUFFALO APP CON <b>126.15 263.125</b>	BUFFALO TOWER <b>120.5 257.8</b>	GND CON <b>133.2 257.8</b>	CLNC DEL <b>124.7 257.8</b>	CPDLC
-------------------------	--	-------------------------------------	-------------------------------	--------------------------------	-------



NE-2, 25 FEB 2021 to 25 MAR 2021

NE-2, 25 FEB 2021 to 25 MAR 2021



CATEGORY	A	B	C	D
S-ILS 5	908/18 200 (200-½)			
S-LOC 5	1100/24	392 (400-½)	1100/40	392 (400-¾)
CIRCLING	1200-1	473 (500-1)	1220-1½	1340-2
			493 (500-1½)	613 (700-2)

Knots	60	90	120	150	180
Min:Sec	4:54	3:16	2:27	1:58	1:38