

WAAS CH 70311 W05A	APP CRS 055°	Rwy Idg TDZE Apt Elev	7569 708 727
--	------------------------	-----------------------------	---

RNAV (GPS) Y RWY 5

BUFFALO NIAGARA INTL (BUF)

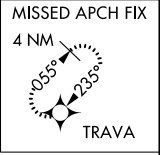
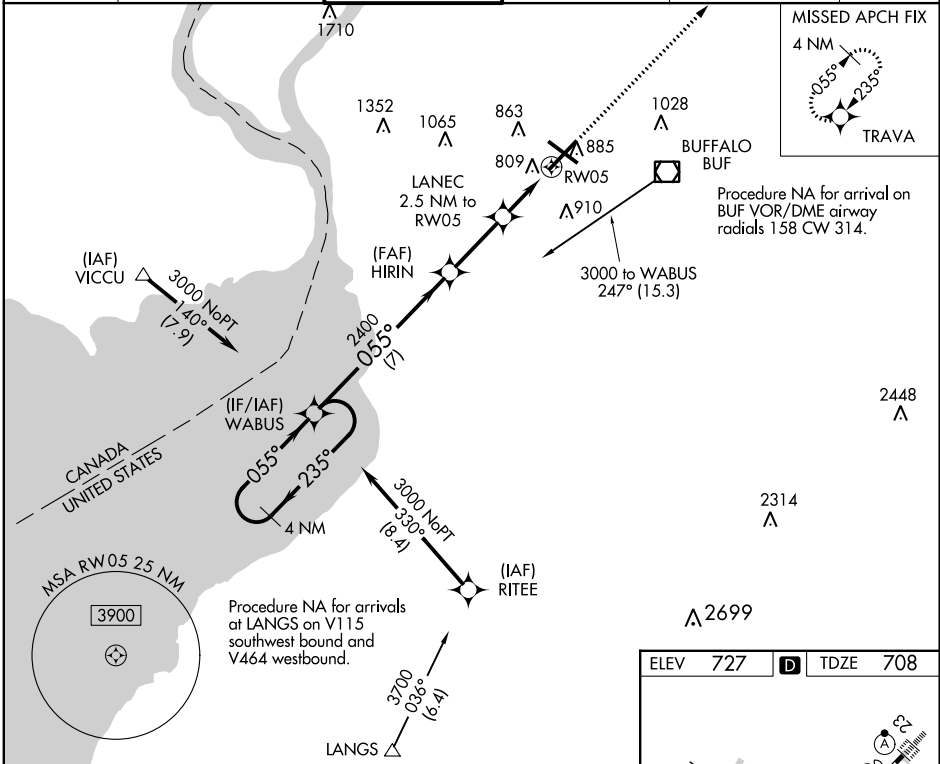
RNP APCH:

For uncompensated Baro-VNAV systems, LNAV/VNAV NA below -17°C (-2°F) or above 54°C (130°F). DME/DME RNP-0.3 NA.



MISSED APPROACH: Climb to 3000 direct TRAVA and hold.

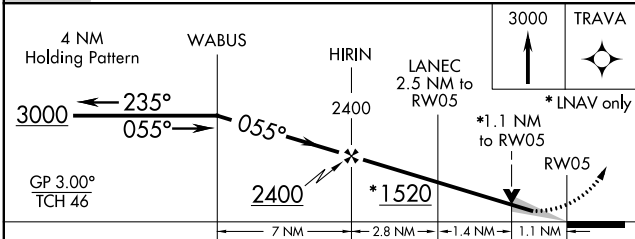
D-ATIS 135.35	BUFFALO APP CON 126.15 263.125	BUFFALO TOWER 120.5 257.8	GND CON 133.2 257.8	CLNC DEL 124.7 257.8	CPDLC
-------------------------	--	-------------------------------------	-------------------------------	--------------------------------	-------



Procedure NA for arrival on BUF VOR/DME airway radials 158 CW 314.

NE-2, 25 FEB 2021 to 25 MAR 2021

NE-2, 25 FEB 2021 to 25 MAR 2021



CATEGORY	A	B	C	D
LPV DA		908/18	200 (200-½)	
LNAV/VNAV DA		997/24	289 (300-½)	
LNAV MDA	1060/24	352 (400-½)	1060/35	352 (400-¾)
CIRCLING	1200-1	473 (500-1)	1220-1½ 493 (500-1½)	1340-2 613 (700-2)

ELEV 727	TDZE 708
----------	----------

REIL Rwy 14
TDZ/CL Rwys 5 and 23
HIRL Rwys 5-23 and 14-32