

WAAS CH 99731 W27A	APP CRS 270°	Rwy Idg TDZE Apt Elev	4505 91 107
--	------------------------	-----------------------------	--

RNAV (GPS) RWY 27

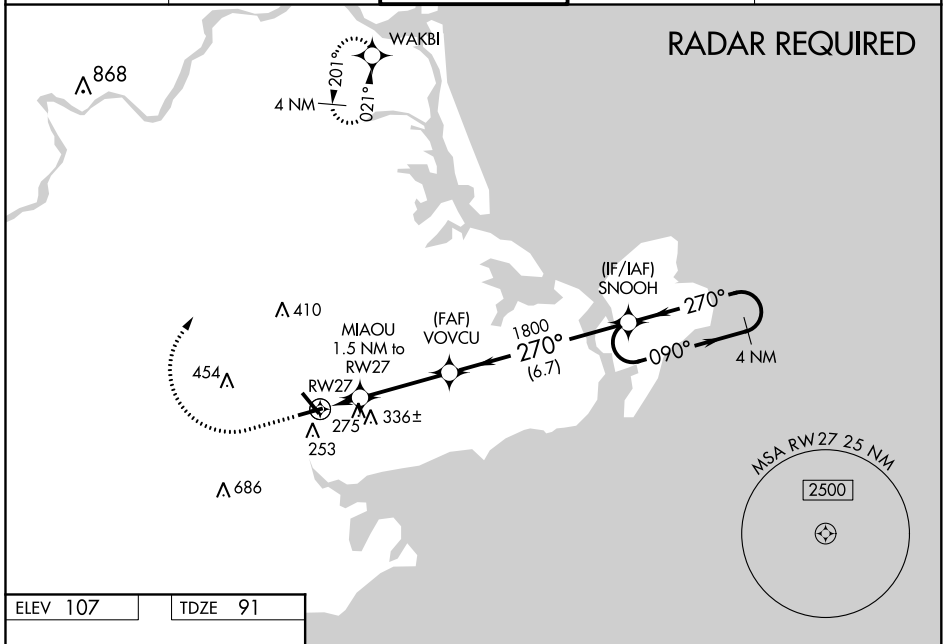
BEVERLY RGNL (BVY)

RNP APCH:

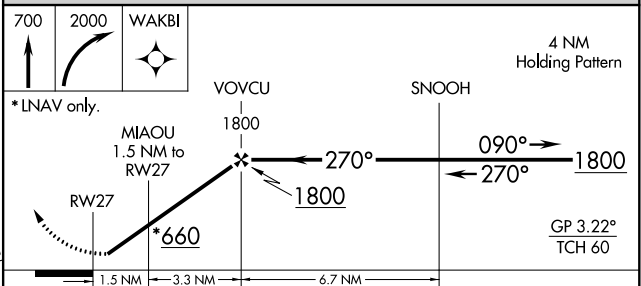
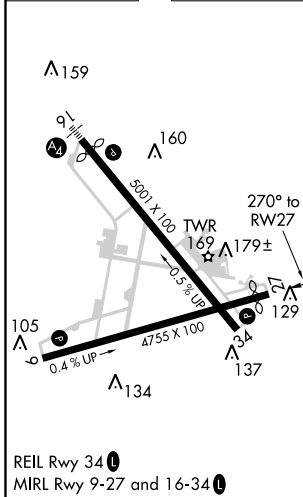
⚠ Baro-VNAV NA when using Lawrence altimeter setting. For uncompensated Baro-VNAV systems, LNAV/VNAV NA below -21°C (-5°F) or above 54°C (130°F). When local altimeter setting not received, use Lawrence altimeter setting; increase LPV DA to 478 and LNAV/VNAV DA to 472 and all MDA 40 feet; increase LPV all Cats visibility and LNAV/VNAV all Cats visibility $\frac{1}{8}$ SM, and increase Circling Cat C and D visibility $\frac{1}{4}$ SM. Circling Rwy 9 NA at night. Rwy 27 helicopter visibility reduction below $\frac{3}{4}$ SM NA.

MISSED APPROACH:
Climb to 700 then climbing right turn to 2000 direct WAKBI and hold.

ATIS 119.2	BOSTON APP CON 124.4 279.6	BEVERLY TOWER★ 125.2 (CTAF) 0	GND CON 121.6	UNICOM 122.95
----------------------	--------------------------------------	---	-------------------------	-------------------------



ELEV 107	TDZE 91
----------	---------



CATEGORY	A	B	C	D
LPV DA	444-1	353 (400-1)		NA
LNAV/VNAV DA	438-1	347 (400-1)		NA
LNAV MDA	540-1	449 (500-1)	540-1 $\frac{3}{8}$	449 (500-1 $\frac{3}{8}$)
C CIRCLING	600-1	493 (500-1)	820-2 713 (800-2)	880-2 $\frac{1}{2}$ 773 (800-2 $\frac{1}{2}$)

NE-1, 25 FEB 2021 to 25 MAR 2021

NE-1, 25 FEB 2021 to 25 MAR 2021