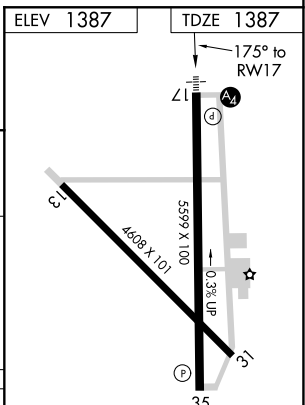
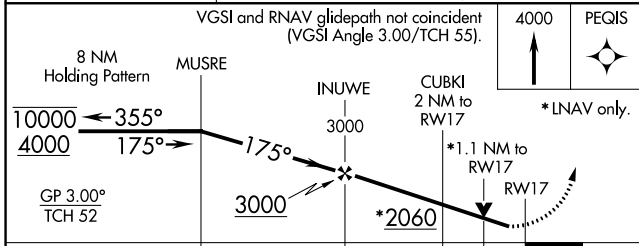
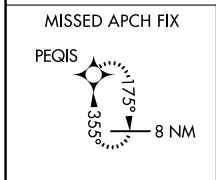
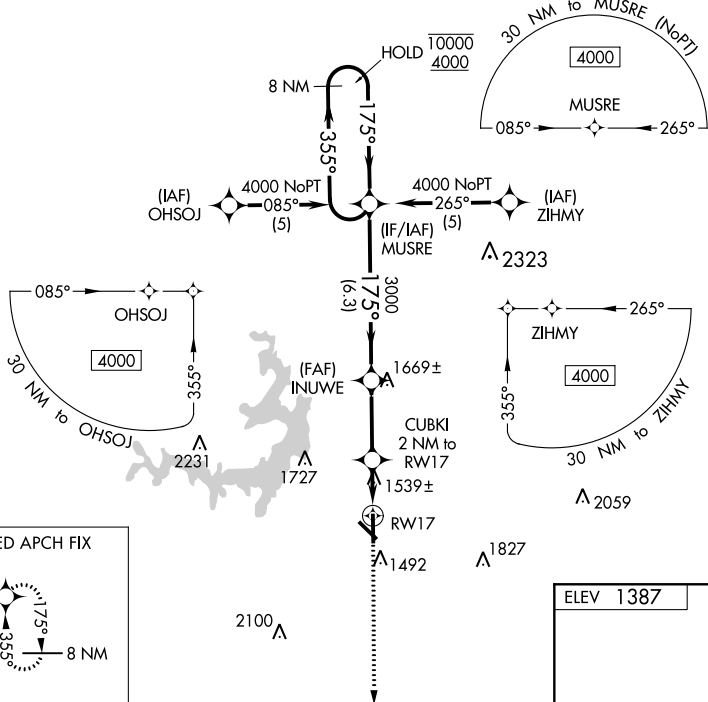


WAAS CH 70325 W17A	APP CRS 175°	Rwy Idg TDZE Apt Elev	5599 1387 1387
----------------------------------------	------------------------	-----------------------------	-------------------------------------------

RNAV (GPS) RWY 17

BROWNWOOD RGNL (BWD)

RNP APCH. ▼ Rwy 17 helicopter visibility reduction below 3/4 SM NA.		MALS A	MISSED APPROACH: Climb to 4000 direct PEQIS and hold.
AWOS-3 118.325	FORT WORTH CENTER 127.45 290.3	UNICOM 122.8 (CTAF)	



CATEGORY	A	B	C	D
LPV DA	1637-3/4		250 (300-3/4)	
LNAV MDA	1800-3/4	413 (500-3/4)	1800-1 1/4	413 (500-1 1/4)
CIRCLING	1840-1	453 (500-1)	1840-1 1/2 453 (500-1 1/2)	1940-2 553 (600-2)

MIRL Rwy 13-31
and 17-35

SC-3, 25 FEB 2021 to 25 MAR 2021

SC-3, 25 FEB 2021 to 25 MAR 2021