

ILS RWY 33L (SA CAT I & II)

LOC I-RUX 111.7	APP CRS 335°	Rwy ldg TDZE 143 Apt Elev 146	8301
---------------------------	------------------------	---	-------------

BALTIMORE/WASHINGTON INTL THURGOOD MARSHALL (BWI)

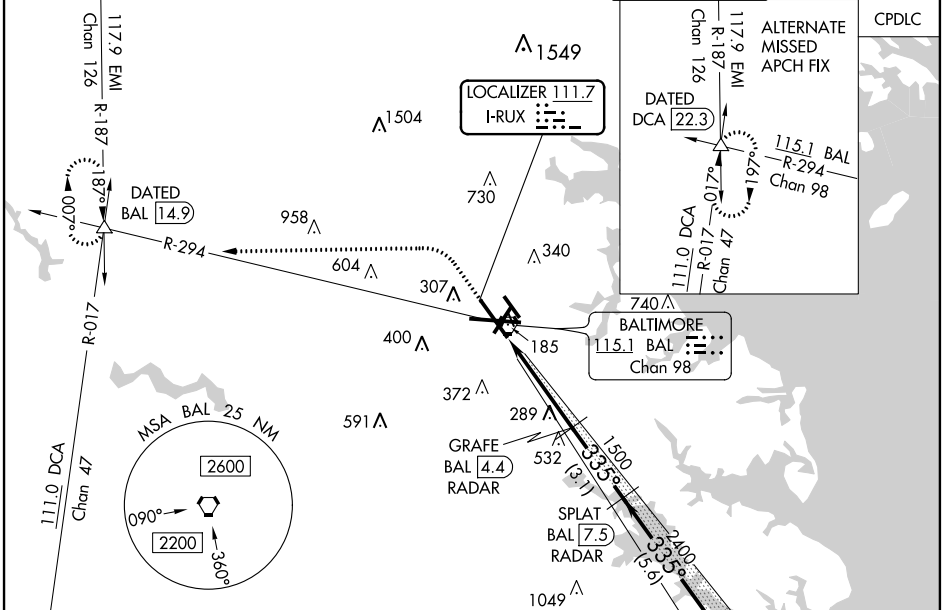
RADAR required for procedure entry.



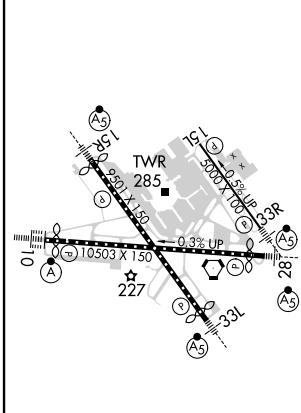
MISSED APPROACH: Climb to 600 then climbing left turn to 2600 on heading 280° and BAL R-294 to DATED INT/BAL 14.9 DME and hold.

⚠ Simultaneous approach authorized with ILS or LOC Rwy 33R. DME from BAL VORTAC. SA CAT I: Requires specific OPSPEC, MSPEC, or LOA approval and use of HUD to DH. SA CAT II: Reduced lighting: Requires specific OPSPEC, MSPEC, or LOA approval and use of autoland or HUD to touchdown.

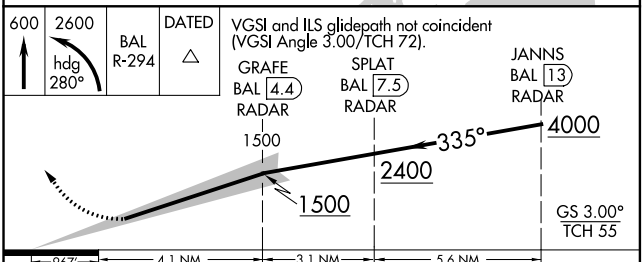
D-ATIS 115.1 127.8	POTOMAC APP CON (020°-100°) 119.0 282.275 (101°-130°) 124.55 317.425	119.7 290.475 (131°-180°) 128.7 307.9 (181°-019°)	BALTIMORE TOWER 119.4 257.8	GND CON 121.9	CLNC DEL 118.05
------------------------------	--	--	---------------------------------------	-------------------------	---------------------------



ELEV 146	D	TDZE 143
-----------------	----------	-----------------



TDZ/CL Rwy 10 and 33L
REIL Rwy 15L and 33R
HIRL all rwy



CATEGORY	A	B	C
S-ILS 33L	SA CAT I RA 186/14 150 DA 293		
S-ILS 33L	SA CAT II RA 132/12 100 DA 243		

SA CATEGORY I & II ILS - SPECIAL AIRCREW & AIRCRAFT CERTIFICATION REQUIRED

ILS RWY 33L (SA CAT I & II)

NE-3, 25 FEB 2021 to 25 MAR 2021

NE-3, 25 FEB 2021 to 25 MAR 2021