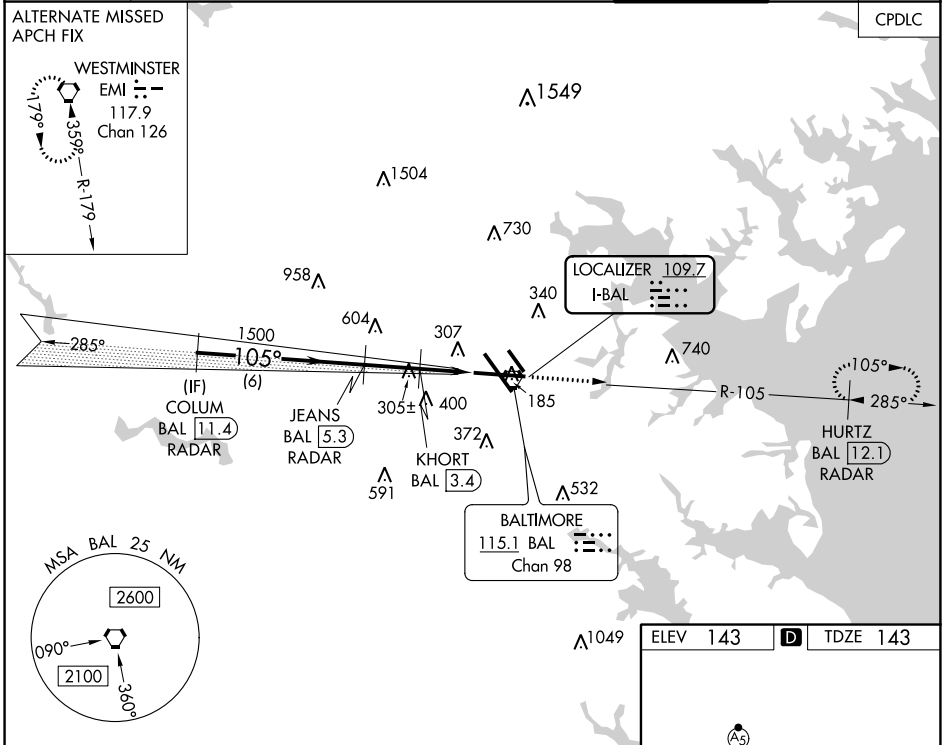


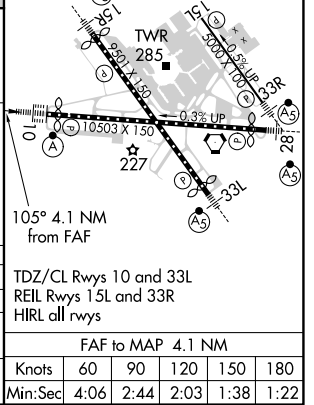
LOC I-BAL 109.7	APP CRS 105°	Rwy ldg 9953 TDZE 143 Apt Elev 143
---------------------------	------------------------	---

BALTIMORE/
WASHINGTON INTL THURGOOD MARSHALL (BWI)
ILS or LOC RWY 10

RADAR required for procedure entry. DME required.		ALSIF-2 	MISSED APPROACH: Climb to 2500 on BAL VORTAC R-105 to HURTZ/BAL 12.1 DME/RADAR and hold.	
D-ATIS 115.1 127.8	POTOMAC APP CON 119.0 282.275 (020°-100°) 119.7 290.475 (131°-180°) 124.55 317.425 (101°-130°) 128.7 307.9 (181°-019°)		BALTIMORE TOWER 119.4 257.8	GND CON 121.9
				CLNC DEL 118.05



COLUM BAL 11.4 RADAR	JEANS BAL 5.3 RADAR	KHORT BAL 3.4	BAL 1.3	HURTZ BAL 12.1
2500		1500	*860	2500
GS 3.00° TCH 55		* LOC only.		
6 NM		2 NM	2.1 NM	
CATEGORY	A	B	C	D
S-ILS 10	343/18		200 (200-½)	
S-LOC 10	580/24 437 (500-½)		580/40 437 (500-¾)	
CIRCLING	640-1 497 (500-1)	660-1 517 (600-1)	700-1½ 557 (600-1½)	860-2¼ 717 (800-2¼)



NE-3, 25 FEB 2021 to 25 MAR 2021

NE-3, 25 FEB 2021 to 25 MAR 2021