

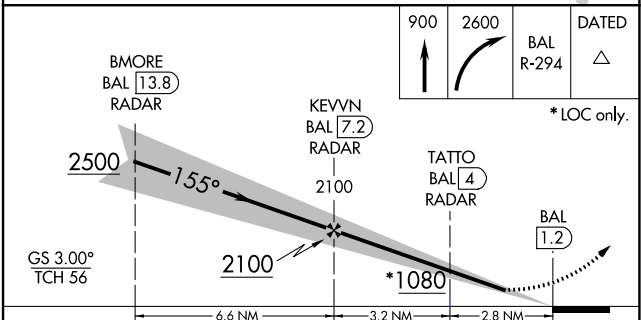
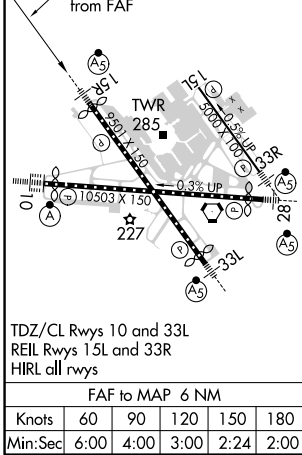
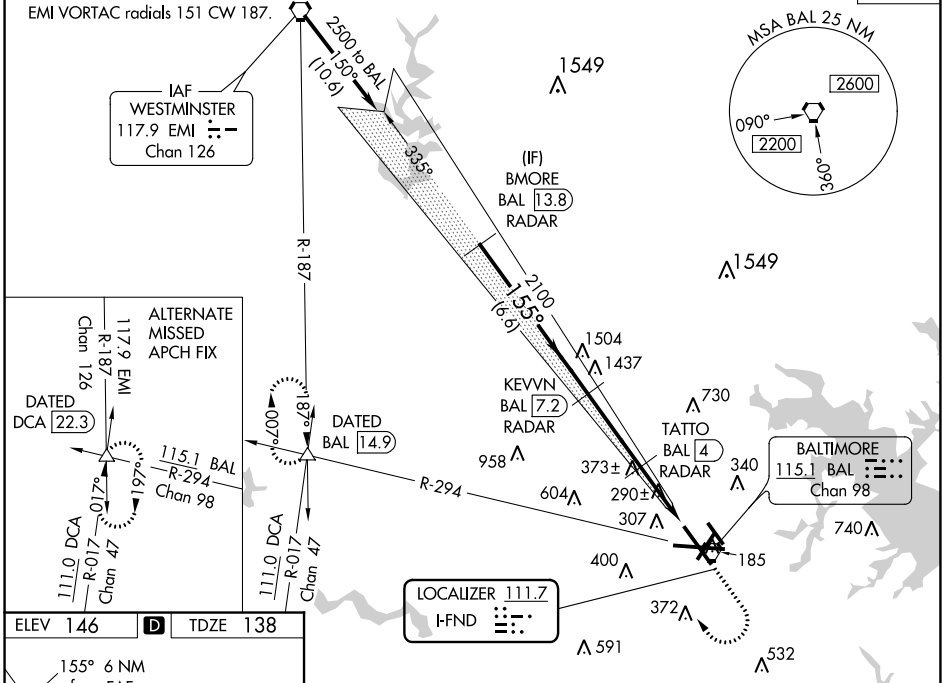
LOC I-FND <b>111.7</b>	APP CRS <b>155°</b>	Rwy Idg TDZE Apt Elev	<b>8301</b> <b>138</b> <b>146</b>
---------------------------	------------------------	-----------------------------	---

BALTIMORE/  
WASHINGTON INTL THURGOOD MARSHALL (BWI) **ILS or LOC RWY 15R**

⚠ Simultaneous approach authorized with Rwy 15L. DME or Radar required. DME from BAL VORTAC. # RVR 1800 authorized with use of FD or AP or HUD to DA.	MALS/R	MISSED APPROACH: Climb to 900 then climbing right turn to 2600 on BAL VORTAC R-294 to DATED INT/BAL 14.9 DME and hold.

D-ATIS <b>115.1 127.8</b>	POTOMAC APP CON (020°-100°) <b>119.7 290.475</b> (131°-180°) (101°-130°) <b>128.7 307.9</b> (181°-019°)	BALTIMORE TOWER <b>119.4 257.8</b>	GND CON <b>121.9</b>	CLNC DEL <b>118.05</b>
------------------------------	---	---------------------------------------	-------------------------	---------------------------

Procedure NA for arrival on EMI VORTAC radials 151 CW 187. CPDLC



CATEGORY	A	B	C	D
S-ILS 15R		#338/24	200 (200-½)	
S-LOC 15R	540/24	402 (400-½)	540/40	402 (400-¾)
CIRCLING	640-1 494 (500-1)	660-1 514 (600-1)	700-1½ 554 (600-1½)	880-2¼ 734 (800-2¼)

NE-3, 25 FEB 2021 to 25 MAR 2021

NE-3, 25 FEB 2021 to 25 MAR 2021