

LOC I-RUX 111.7	APP CRS 335°	Rwy ldg TDZE 143	8301 Apt Elev 146
---------------------------	------------------------	----------------------------	--------------------------------

BALTIMORE/
WASHINGTON INTL THURGOOD MARSHALL (BWI)
ILS or LOC RWY 33L

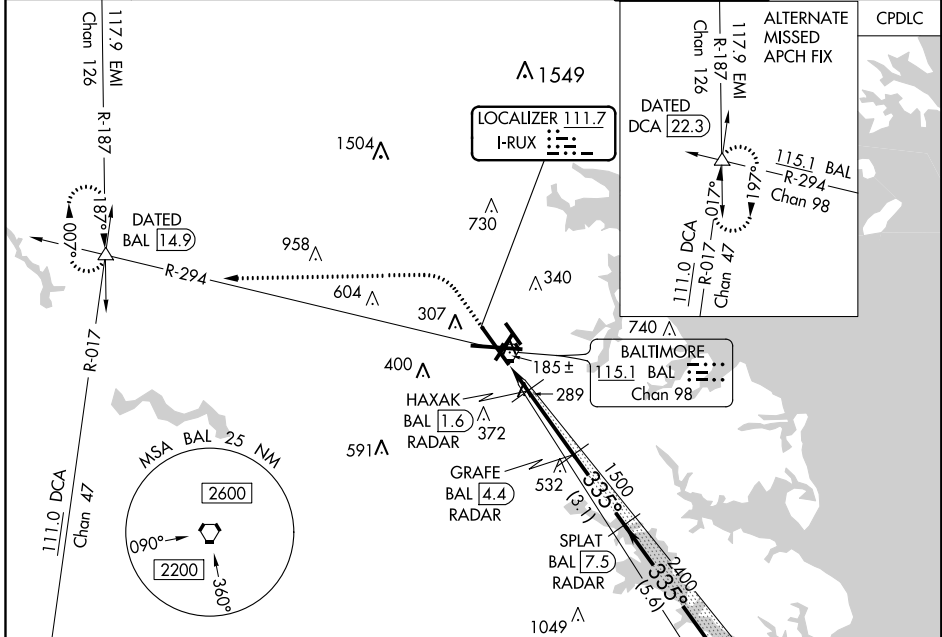
DME or RADAR required for LOC only. RADAR required for procedure entry.

Simultaneous approach authorized with ILS or LOC Rwy 33R. DME from BAL VORTAC.

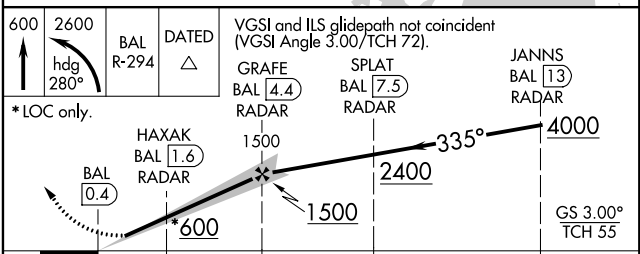
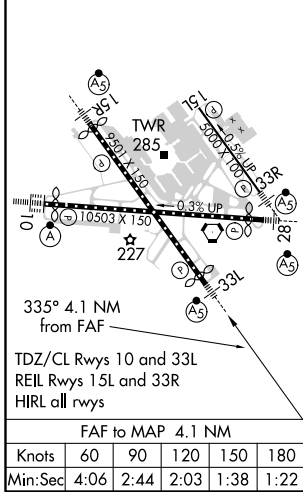
MALSR

MISSED APPROACH: Climb to 600 then climbing left turn to 2600 on heading 280° and BAL R-294 to DATED INT/BAL 14.9 DME and hold.

D-ATIS 115.1 127.8	POTOMAC APP CON 119.0 282.275 (020°-100°) 119.7 290.475 (131°-180°) 124.55 317.425 (101°-130°) 128.7 307.9 (181°-019°)	BALTIMORE TOWER 119.4 257.8	GND CON 121.9	CLNC DEL 118.05
------------------------------	-------------------------------------------------------------------------------------------------------------------------------------------------------------	---------------------------------------	-------------------------	---------------------------



ELEV 146	D	TDZE 143
----------	---	----------



CATEGORY	A	B	C	D
S-ILS 33L	343/18		200 (200-½)	
S-LOC 33L	540/24	397 (400-½)	540/40	397 (400-¾)
CIRCLING	640-1 494 (500-1)	660-1 514 (600-1)	700-1½ 554 (600-1½)	880-2¼ 734 (800-2¼)

ILS or LOC RWY 33L

NE-3, 25 FEB 2021 to 25 MAR 2021

NE-3, 25 FEB 2021 to 25 MAR 2021