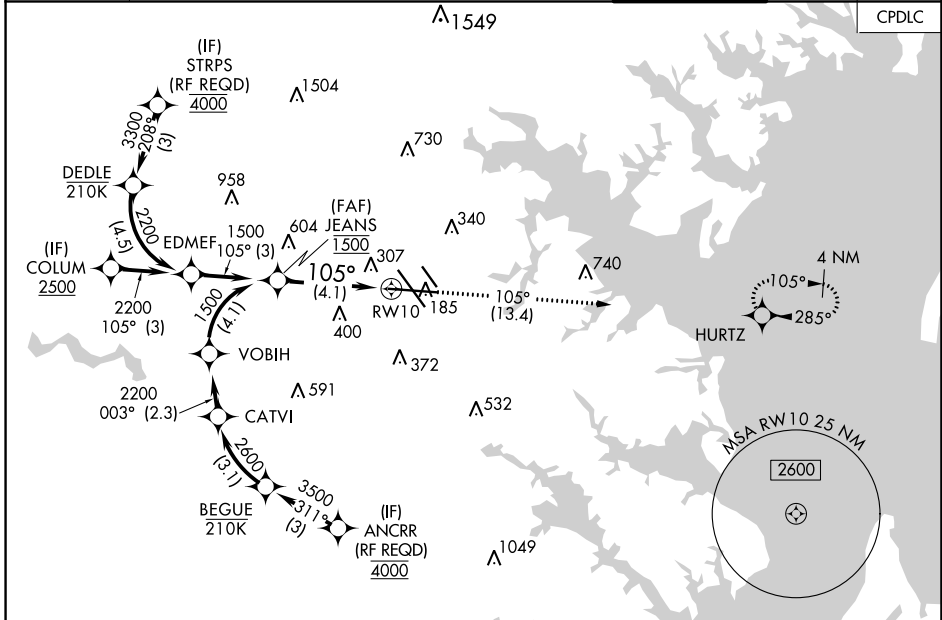


| | | |
|------------------------|-----------------------------|---|
| APP CRS 105° | Rwy Idg TDZE Apt Elev | 9953 143 143 |
|------------------------|-----------------------------|---|

RNAV (RNP) Z RWY 10

BALTIMORE/WASHINGTON INTL THURGOOD MARSHALL (BWI)

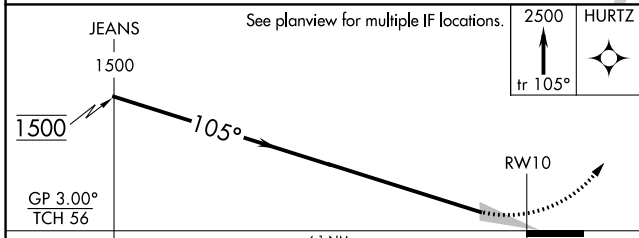
| | | | | |
|---|--|--------------------|---|---------------|
| RNP AR APCH. | | ALSF-2 | MISSED APPROACH: Climb to 2500 on track 105° to HURTZ and hold. | |
| <p>▼ For uncompensated Baro-VNAV systems, procedure NA below -12°C (11°F) or above 54°C (130°F). For inop ALS, increase RNP 0.11 all Cats visibility to RVR 4500, increase RNP 0.30 all Cats visibility to 1 3/8.</p> | | | | |
| D-ATIS | POTOMAC APP CON | BALTIMORE TOWER | GND CON | CLNC DEL |
| 115.1 127.8 | 119.0 282.275 124.55 317.425 | 119.4 257.8 | 121.9 | 118.05 |
| | (020°-100°) 119.7 290.475 (131°-180°) (101°-130°) 128.7 307.9 (181°-019°) | | | |



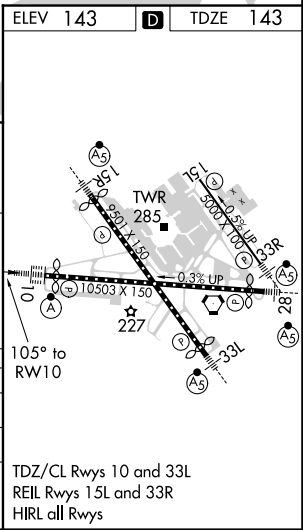
NE-3, 25 FEB 2021 to 25 MAR 2021

NE-3, 25 FEB 2021 to 25 MAR 2021

| | | |
|----------|----------|----------|
| ELEV 143 | D | TDZE 143 |
|----------|----------|----------|



| | | | | | |
|--------------------|---|--------|-------------|------|-------|
| GP 3.00° TCH 56 | See planview for multiple IF locations. | | | 2500 | HURTZ |
| | 4.1 NM | | | | |
| CATEGORY | A | B | C | D | |
| RNP 0.11 DA | | 448/24 | 305 (400-½) | | |
| RNP 0.30 DA | | 626/60 | 483 (500-½) | | |



AUTHORIZATION REQUIRED

TDZ/CL Rwys 10 and 33L
REIL Rwys 15L and 33R
HIRL all Rwys

RNAV (RNP) Z RWY 10