

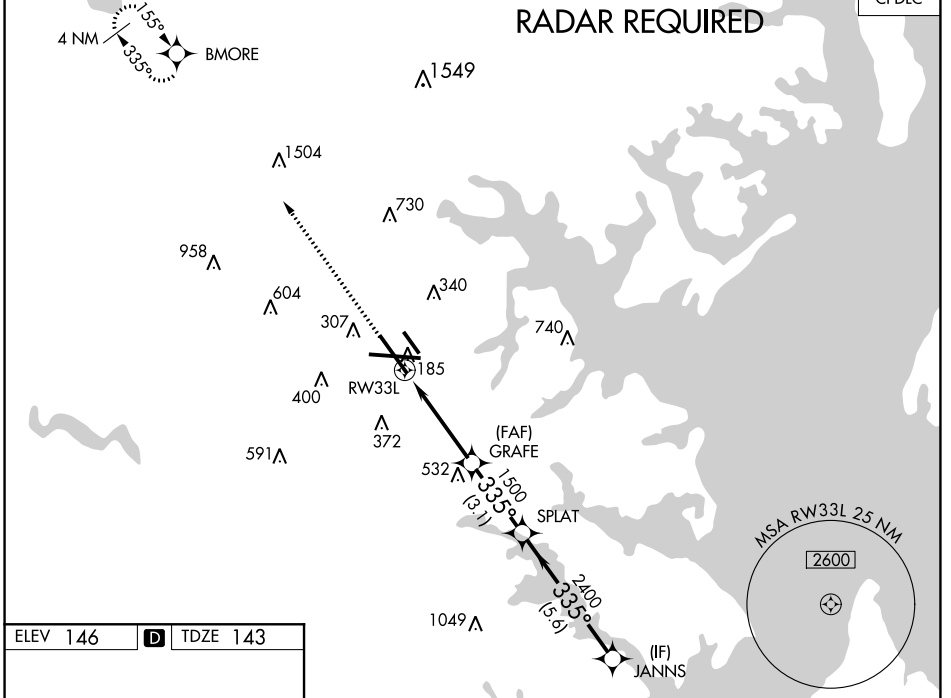
WAAS CH 82207 W33A	APP CRS 335°	Rwy Idg TDZE 143 Apt Elev 146	8301 143 146
--	------------------------	---	---

RNAV (GPS) Y RWY 33L

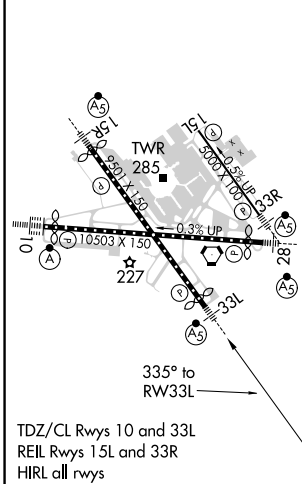
BALTIMORE/WASHINGTON INTL THURGOOD MARSHALL (BWI)

For uncompensated Baro-VNAV systems, LNAV/VNAV NA below -12°C (11°F) or above 54°C (130°F). DME/DME RNP-0.3 NA.	MALS 	MISSED APPROACH: Climb to 3000 direct BMORE and hold.					
		<table border="1"> <tr> <td>D-ATIS 115.1 127.8</td> <td>POTOMAC APP CON (020°-100°) 119.7 290.475 (131°-180°) (101°-130°) 128.7 307.9 (181°-019°)</td> <td>BALTIMORE TOWER 119.4 257.8</td> <td>GND CON 121.9</td> <td>CLNC DEL 118.05</td> </tr> </table>			D-ATIS 115.1 127.8	POTOMAC APP CON (020°-100°) 119.7 290.475 (131°-180°) (101°-130°) 128.7 307.9 (181°-019°)	BALTIMORE TOWER 119.4 257.8
D-ATIS 115.1 127.8	POTOMAC APP CON (020°-100°) 119.7 290.475 (131°-180°) (101°-130°) 128.7 307.9 (181°-019°)	BALTIMORE TOWER 119.4 257.8	GND CON 121.9	CLNC DEL 118.05			

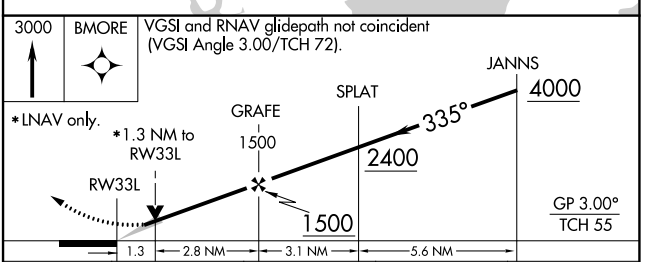
CPDLC				
-------	--	--	--	--



ELEV 146	D	TDZE 143
----------	----------	----------



TDZ/CL Rws 10 and 33L
REIL Rws 15L and 33R
HIRL all rws



CATEGORY	A	B	C	D
LPV DA		343/18	200 (200-½)	
LNAV/VNAV DA		432/24	289 (300-½)	
LNAV MDA	600/24	457 (500-½)	600/50	457 (500-1)
C CIRCLING	640-1 494 (500-1)	660-1 514 (600-1)	700-1½ 554 (600-1½)	880-2¼ 734 (800-2¼)

NE-3, 25 FEB 2021 to 25 MAR 2021

NE-3, 25 FEB 2021 to 25 MAR 2021